



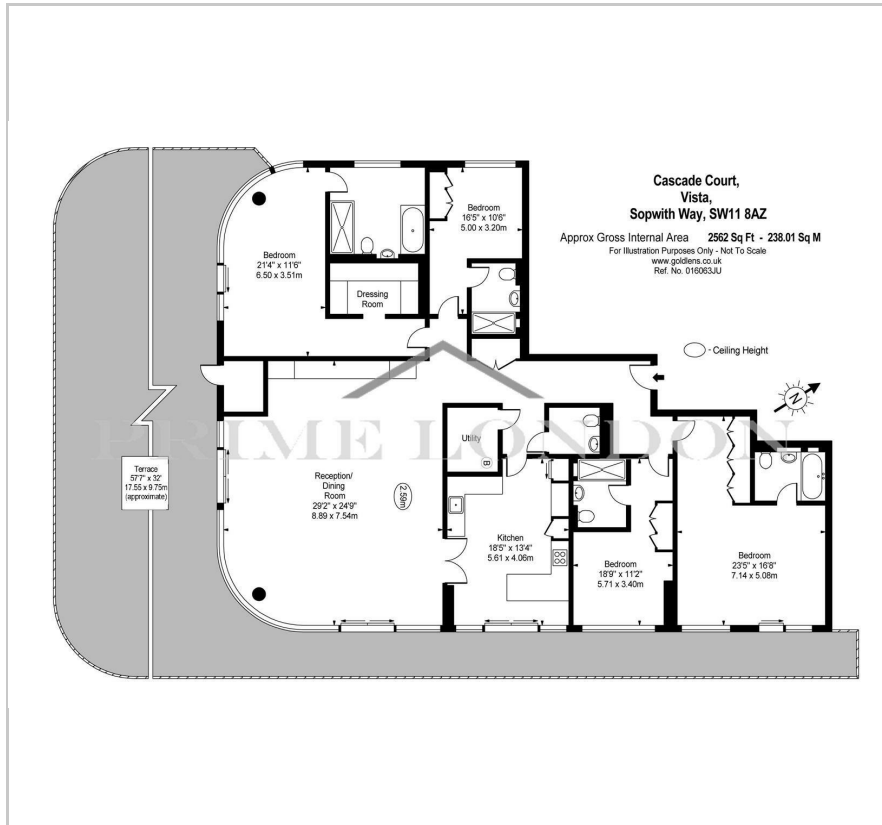
Cascade Court

Vista, Chelsea Bridge Wharf, SW11 8AZ

Asking Price £6,500,000



Floor Plan



Area Map



Energy Efficiency Graph



Viewing

By appointment. Contact us on 0207 928 6663 if you wish to arrange a viewing appointment for this property, or require further information.

- Exceptional penthouse apartment
- 2,562 sq ft (238 sqm) internally
- Staggering private terrace
- One of a kind
- Bespoke internal updates and furnishings
- Master with dressing room and en-suite bath and shower
- Four double bedrooms
- 24 hour concierge service

An exceptional penthouse apartment directly overlooking Battersea Park, offering 2,562 sq ft (238 sqm) internally and a staggering private terrace, available through Prime London.

The property is one of a kind, with bespoke internal updates and furnishings throughout its curved reception, eat-in kitchen, four double bedrooms (master with dressing room and en-suite bath and shower) and elegant hallway.

Cascade Court at Vista is the primary phase in this contemporary development (with residents' leisure facilities and 24 hour concierge service), offering bright apartments with magnificent large windows and superb finishes, quality engineered timber flooring, kitchens with subtle satin finishes and beautiful stone work surfaces, high specification bathrooms and bedrooms with a fusion of subtle lighting, muted tones and soft carpeting.

The innovative and striking architecture has been conceived by world-leading architects Scott Brownrigg, to incorporate extensive outdoor landscaping and feature terraces whilst fitting into the beautiful surroundings of Battersea Park.



These particulars, whilst believed to be accurate are set out as a general outline only for guidance and do not constitute any part of an offer or contract. Intending purchasers should not rely on them as statements of representation of fact, but must satisfy themselves by inspection or otherwise as to their accuracy. No person in this firm's employment has the authority to make or give any representation or warranty in respect of the property.