



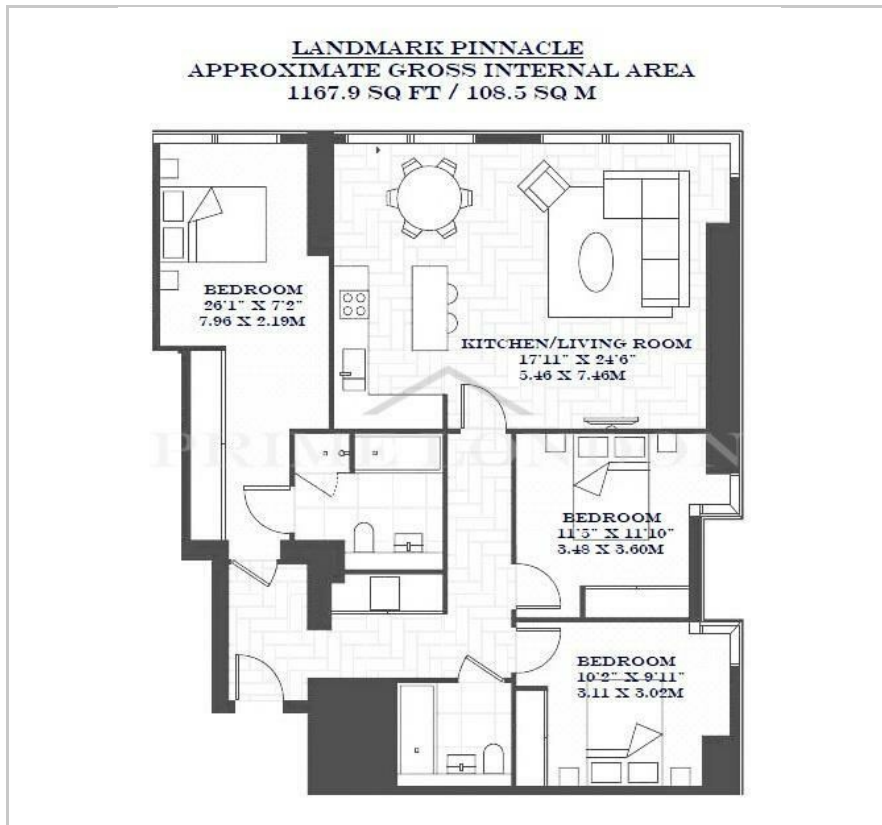
Landmark Pinnacle

10 Marsh Wall, Canary Wharf, E14 9GU

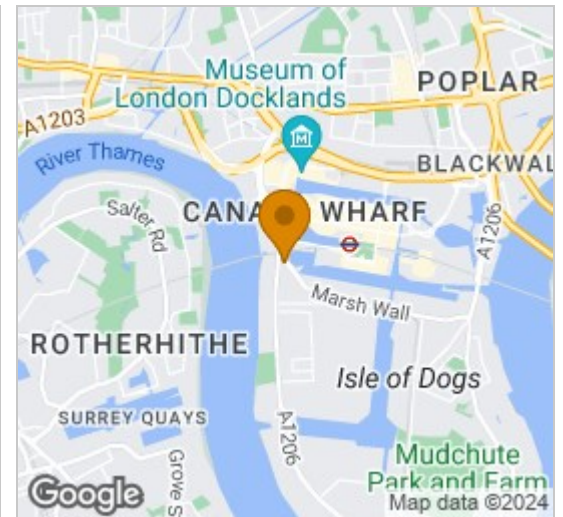
Asking Price £1,450,000



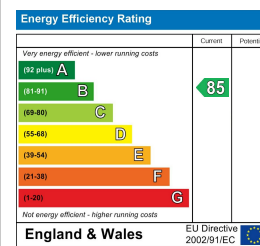
Floor Plan



Area Map



Energy Efficiency Graph



Viewing

By appointment. Contact us on 0207 928 6663 if you wish to arrange a viewing appointment for this property, or require further information.

- Highest residential building in the city
- 1,167 sq ft / 108.5 sq m
- Chain free
- Residents' cinema, media room, lounge, library, golf simulator, and games room
- Stunning views of the City of London
- Brand new - never used or lived in
- 56th floor gym with a separate exercise studio and Pilates area
- 24 hour concierge

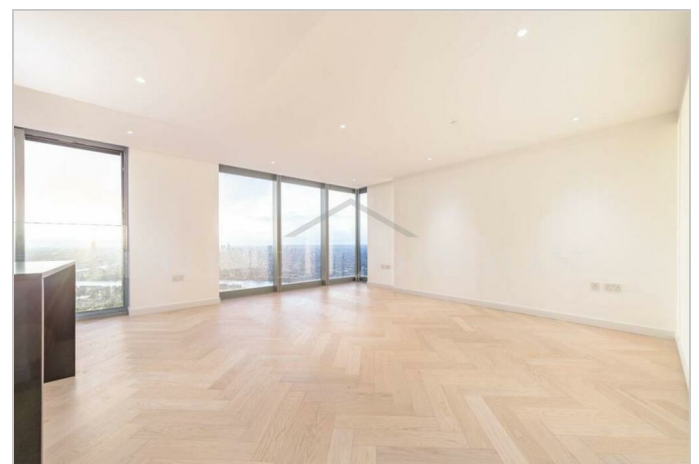


This pristine modern three bedroom apartment, set in an excellent position within Landmark Pinnacle, offers a well designed reception showcasing stunning views overlooking the River Thames and City of London, and is available for chain free sale through Prime London.

Finished to an incredibly high standard throughout, this 1,167 sq ft / 108.5 sq m property comprises an open plan reception and fully fitted and stylish kitchen, three spacious double bedrooms with built in storage, and two beautifully designed modern bathrooms (one of which is en-suite).

Landmark Pinnacle offers residents the best of modern living, such as the opportunity to enjoy a wealth of excellent amenities including private cinema hall, sky gardens, green spaces with a health-friendly amenities including gym, a separate exercise studio, a Pilates room and relaxation area are on level 56. The social lounge is located on level 56 where the residents can relax on sofas, play some pool or table tennis, practice their swing on a golf simulator, two elegant private dining rooms on level 56. The roof terrace on top of the building at level 75.

The development is also next to a broad choice of shopping malls and open spaces, including a riverside walk, parks and gardens. The Queen Elizabeth Olympic Park is located less than 10 minutes away and provides a vast selection of sporting facilities. Transport wise, Landmark Pinnacle is located a short 6-minute walk from Heron Quays station, where you can catch the DLR. Alternatively, located a 7-minute walk away is Canary Wharf underground station where the Jubilee line provides fast connections across London and beyond. In the same amount of time, you could also walk to Canary Wharf pier to enjoy the riverside or catch a river bus.



These particulars, whilst believed to be accurate are set out as a general outline only for guidance and do not constitute any part of an offer or contract. Intending purchasers should not rely on them as statements of representation of fact, but must satisfy themselves by inspection or otherwise as to their accuracy. No person in this firm's employment has the authority to make or give any representation or warranty in respect of the property.