



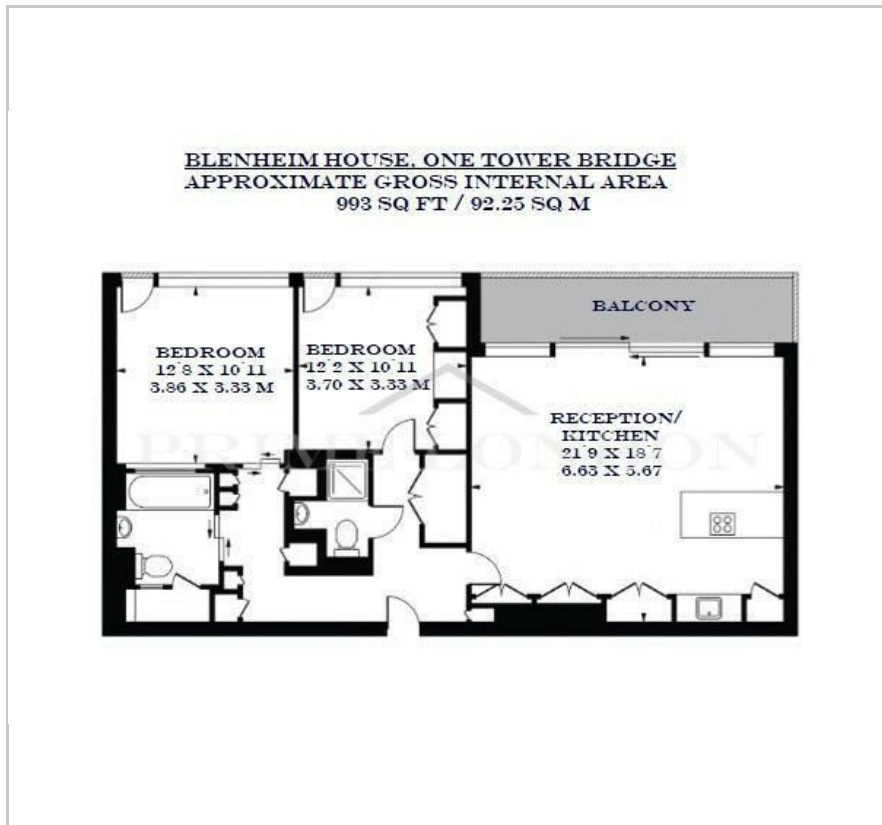
Blenheim House

Crown Square, One Tower Bridge, SE1 2SF

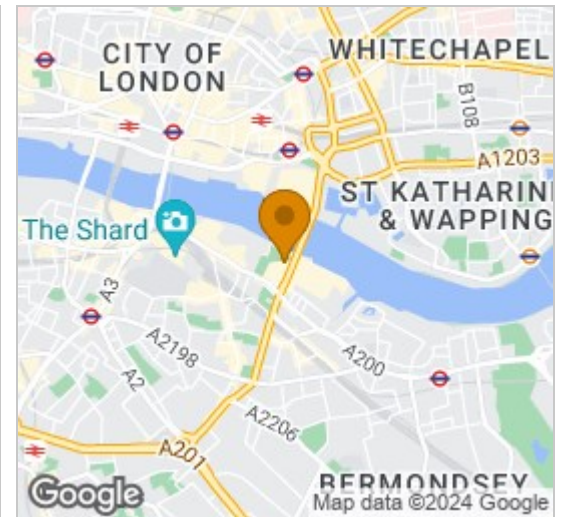
£1,846 Per Week



Floor Plan



Area Map



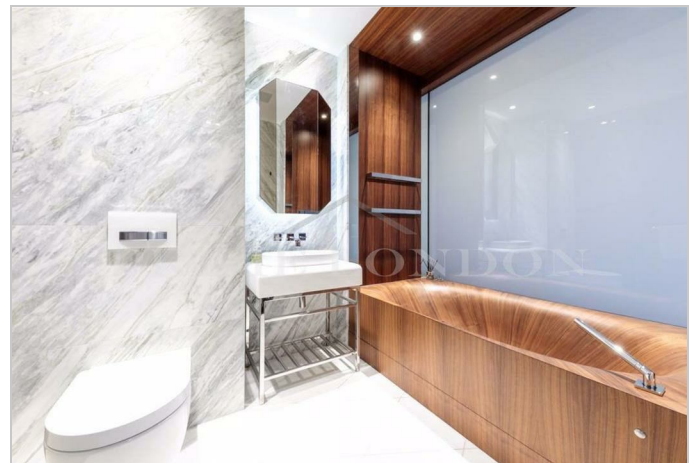
Energy Efficiency Graph



Viewing

By appointment. Contact us on 0207 928 6663 if you wish to arrange a viewing appointment for this property, or require further information.

- Two bedroom apartment
- Unparalleled views
- Fully furnished
- Spa facilities with sauna, steam room, swimming pool, and gym
- 993 sq ft (92.25 sqm)
- Bespoke finishes of the highest quality
- Private balcony with direct views over Tower Bridge
- 24-hour concierge



This stunning two bedroom apartment in Blenheim House, the most recent phase of building of One Tower Bridge development, with unparalleled views of Tower Bridge, the Tower of London, The City and the River Thames is available to lease through Prime London.

A large and bright reception with a bespoke open-plan kitchen and dining area leads onto a private balcony, with stunning views of some of London's most famous monuments as well as the River Thames.

The apartment further comprises a spacious master-suite with the same stunning views of the Tower Bridge and a further double bedroom and family shower room, all of which have been designed to perfection.

This truly immaculate apartment has been finished to the highest standard, these include light oak flooring, dark marble worktops, integrated Miele appliances, light marble and delicate metalwork in the showers, brushed brass wardrobe trims, an improved comfort cooling system and an abundance of meticulously designed storage space amongst many other improvements. The finest modern technology has also been installed including remote control lights, under floor heating, an integrated sound system and electric blinds which can all be controlled from wall panels throughout the property, or from your own personal devices.

Residents also benefit from exceptional onsite amenities, including 24-hour concierge, spa facilities with sauna, steam room, swimming pool, gym and business lounge. Located moments from the City of London, in the heart



These particulars, whilst believed to be accurate are set out as a general outline only for guidance and do not constitute any part of an offer or contract. Intending purchasers should not rely on them as statements of representation of fact, but must satisfy themselves by inspection or otherwise as to their accuracy. No person in this firm's employment has the authority to make or give any representation or warranty in respect of the property.