

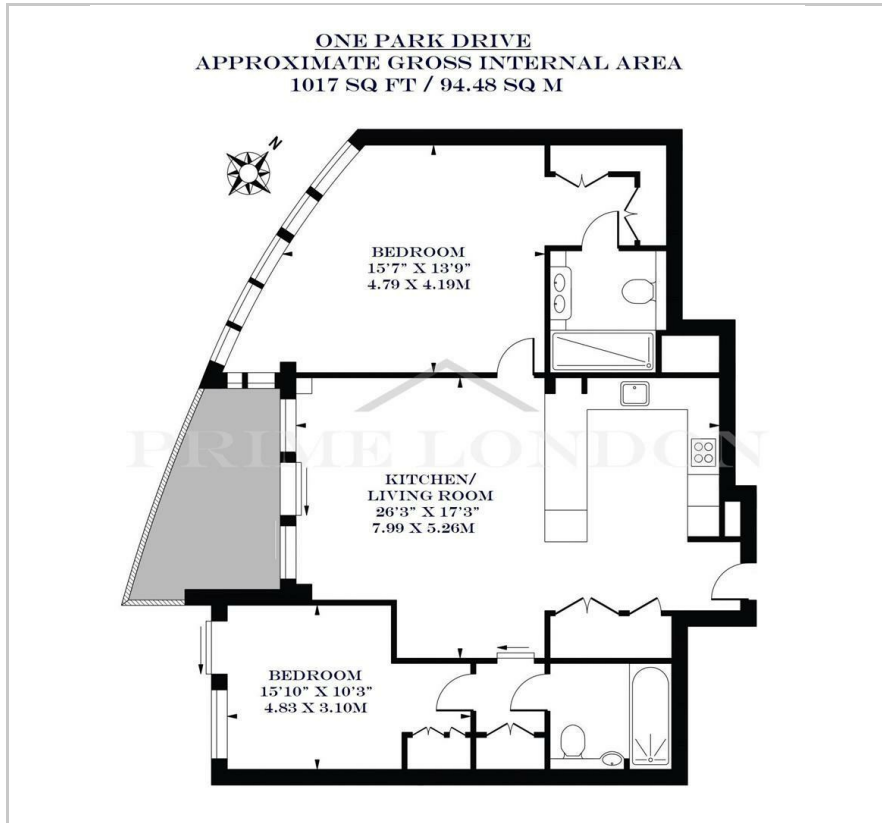
One Park Drive

Canary Wharf, E14 9BB

Asking Price £1,720,000



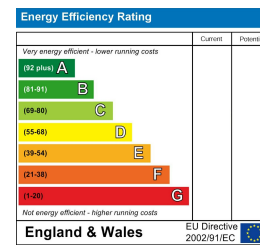
## Floor Plan



## Area Map



## Energy Efficiency Graph



## Viewing

Please contact our on 0207 928 6663 if you wish to arrange a viewing appointment for this property or require further information.

- High level luxury two bedroom ■ 1,017 sq ft / 94.48 sq m apartment
- Stunning views of Canary Wharf and City ■ Large balcony offering skyline views
- Residents' gym, 20-metre swimming pool, steam room, and sauna ■ 24 hour concierge

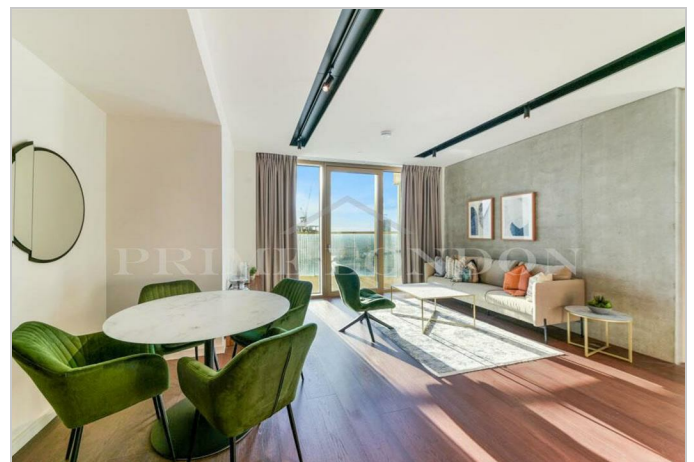


This high-specification and architecturally striking two bedroom property offers a clean contemporary living space of 1,017 sq ft / 94.48 sq m in the exclusive One Park Drive development in the heart of Canary Wharf, and is available for chain free sale through Prime London. Parking can also be purchased through separate negotiation.

Set on a higher floor and facing the beautiful metropolis of Canary Wharf, showcasing the surrounding area from an excellent vantage point from the stunning private terrace. This property further comprises a spacious open plan reception and kitchen, two double bedrooms (both with dressing area), and two modern bathrooms (one of which is en suite). The property also benefits from having wooden flooring throughout, comfort cooling and underfloor heating. Residents enjoy premium amenities, such as 24-hour Concierge, a Cinema Room, Health Facilities including a Gym with a 20-metre Swimming Pool, Steam Room, Sauna, Weightlifting Area and Training Area. As well as a Residents' Library/Lounge and Canary Wharf Estate Security.

One Park Drive is situated in the heart of Canary Wharf and is London's first residential tower by Herzog & de Meuron, meaning the design is unlike anything else, and rarity is always highly sought after.

Canary Wharf is also very well connected: there's the Jubilee Underground line, two Docklands Light Railway stations, Thames River Bus Pier, and it's just a short distance from London City Airport. Also, the arrival of Crossrail will mean you'll be able to reach the West End in 13 minutes and Heathrow in just 39 minutes.



These particulars, whilst believed to be accurate are set out as a general outline only for guidance and do not constitute any part of an offer or contract. Intending purchasers should not rely on them as statements of representation of fact, but must satisfy themselves by inspection or otherwise as to their accuracy. No person in this firm's employment has the authority to make or give any representation or warranty in respect of the property.