

Beam Park, Miller Road, Rainham, Essex, RM13 8RZ

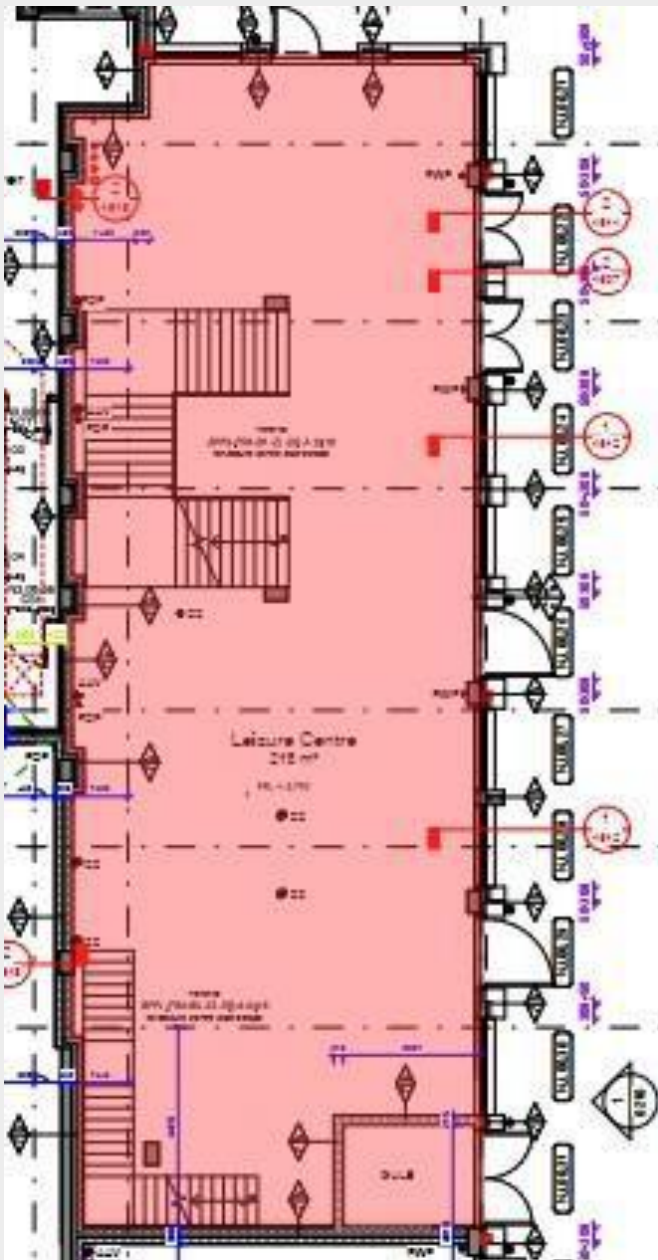
TO LET /FOR SALE

Gym /Leisure

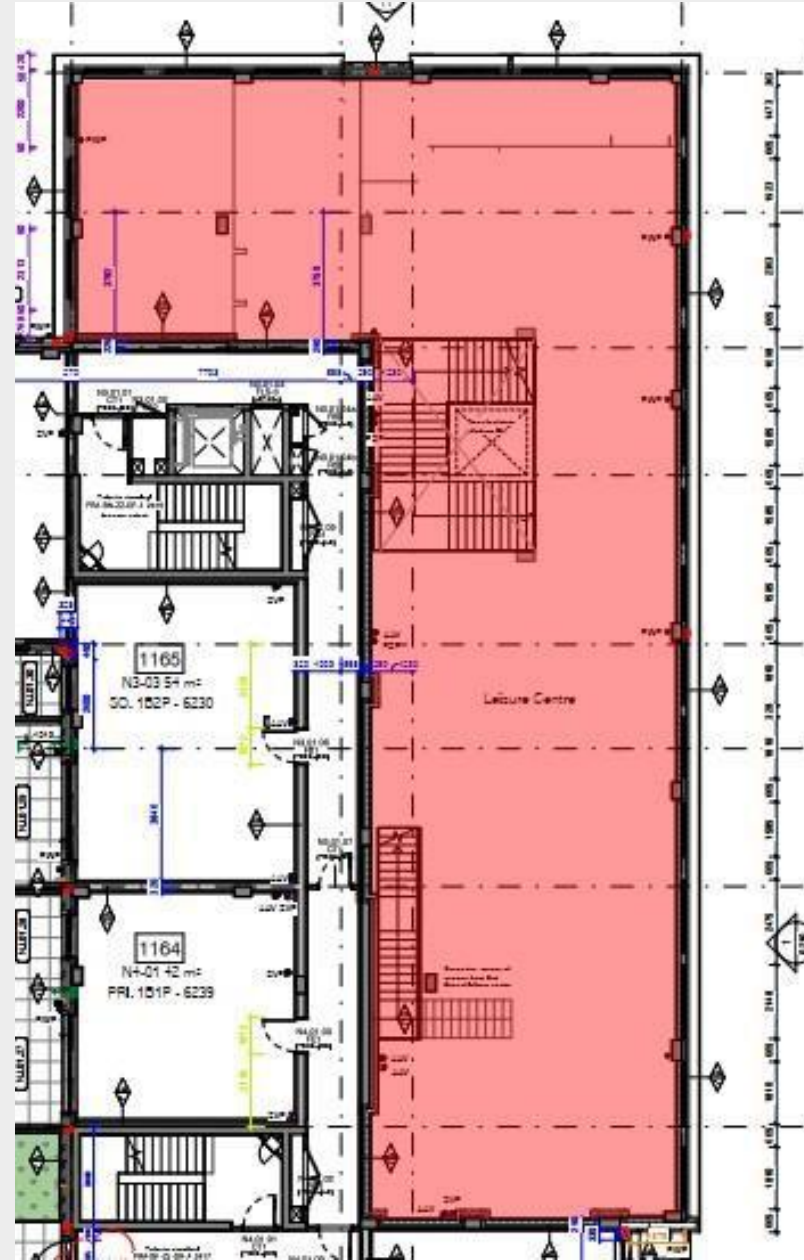
5,350 sq ft /497 sq m

**£80,000 per annum Grd & 1st Flr /
£800,000**

Use Class D2 – Leisure/Gym Use



Ground Floor



First Floor

- Great road links.
- Brand new proposed Beam Park Station.
- Near by occupiers - NHS Medical school, Sainsbury's local & Day Nursery.
- Additional area at mezzanine level.
- Capped services.
- Three phase electricity

AMMENITIES

Description

The new destination Beam Park, by Countryside (part of Vistry Group) and L&Q, is situated on New Road Rainham. There are direct links to the City and beyond. The Beam Park development comprises of 3,000 residential units (rising to 3,900 subject to planning), a proposed new railway station, mixed-use commercial and community spaces. The unit is offered in shell and core condition with shopfronts installed and capped off services.

Location

Located between Dagenham Dock and Rainham stations on the London, Tilbury & Southend railway line; which is operated by C2C. London Fenchurch Street Station is a 21 minute train journey from Dagenham Dock and 24 minutes from Rainham Station. Dagenham Heathway & East (District Line) are approximately 1.5 miles away from Beam Park.

BEAMPARK

Explore a beautifully planned new neighbourhood

LINEAR PARK

A boulevard style green corridor and Linear Park with pedestrian and cycling routes, creating a new strategic route along Beam Parkway to connect Beam Park and Rainham Village.


BEAM SQUARE

A landscaped square encircled by Sainsbury's Local Nero Lounge Restaurant and additional commercial units.

CENTRAL PARK

The new Central Park will be the heart of the community. The park will promote biodiversity and include children's play areas, outdoor exercise/workout equipment and plenty of space for residents to socialise and relax.


 MULTI-FAITH CENTRE
Proposed

 GYM
Under construction

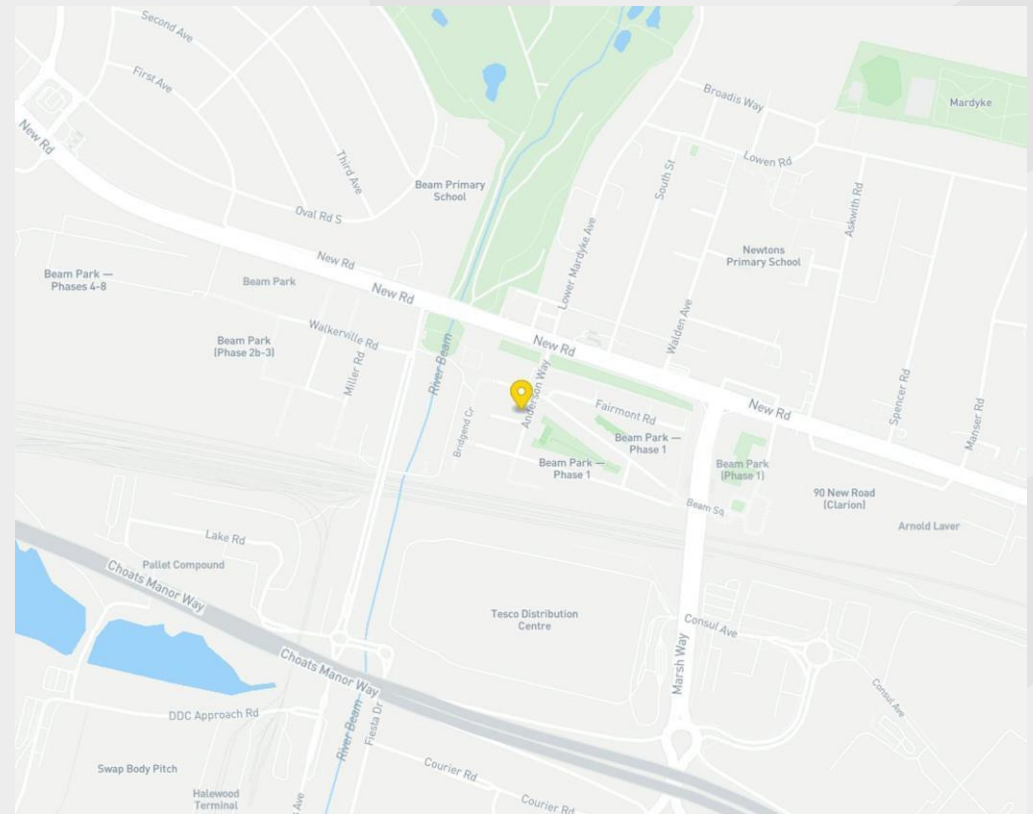
 RAINBOW ANGELS NURSERY
Open

 PARK VIEW

 PRIMARY SCHOOL
Opening late 2024

 MEDICAL CENTRE
Opening early 2024

 SOUTH GARDENS



Accommodation / Availability

Unit	Sq ft	Sq m	Availability
Ground - Gym	2,347	218	Available
1st - Gym	3,003	279	Available
Total	5,350	497.03	

Tenure

New Lease / Long
Leasehold

Grd & 1st Flr

EPC

Has been commissioned

VAT

Applicable

Configuration

Not Fitted

Contacts

Nowsher Alam

07967776358

nowsher.alam@strettons.co.uk



Strettons and their clients give notice that: 1. They are not authorised to make or give any representations or warranties in relation to the property either here or elsewhere, either on their own behalf or on behalf of their client or otherwise. They assume no responsibility for any statement that may be made in these particulars. These particulars do not form part of any offer or contract and must not be relied upon as statements or representations of fact. 2. Any areas, measurements or distances are approximate. The text, photographs and plans are for guidance only and are not necessarily comprehensive. It should not be assumed that the property has all necessary planning, building regulation or other consents and the Agents have not tested any services, equipment or facilities. Purchasers must satisfy themselves by inspection or otherwise. Generated on 07/03/2024