



TO LET

5,130 SQ FT
(476.59 SQ M)

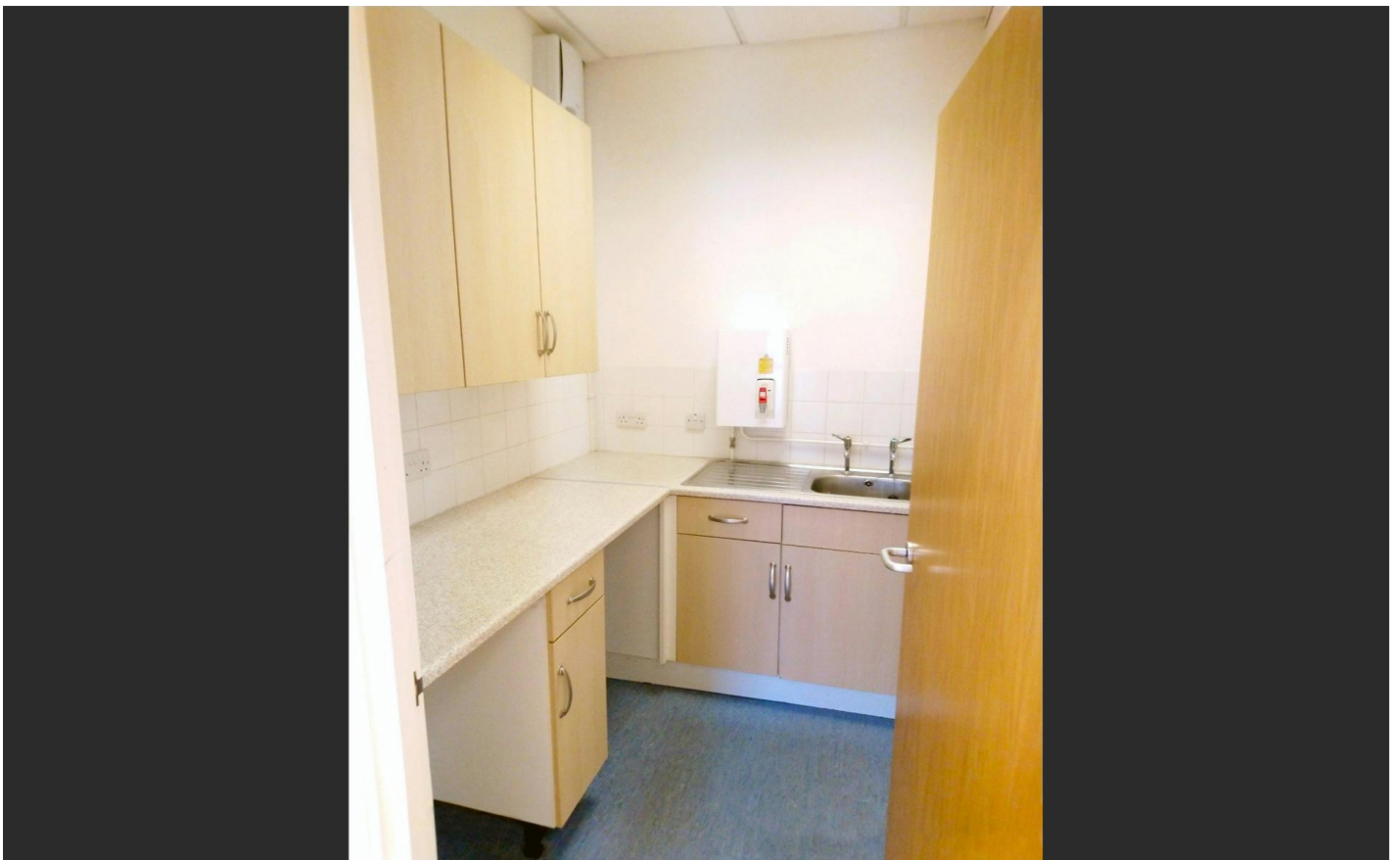
£16 PER SQ FT

Hybrid office/studio building

- Gas fired central heating
- Suspended ceilings
- Male & Female W.C's
- Kitchenette
- 11 parking spaces
- Integral light fittings
- Raised floors & junction boxes

Chingford

Avocet - Unit 3, Trinity Business Park, Trinity Way, London, E4 8TD



Chingford

Avocet - Unit 3, Trinity Business Park, Trinity Way, London, E4 8TD



Description

The premises comprises a two storey hybrid office and studio/warehouse property on a well established business park. Arranged to provide mainly clear space on each floor with the ground floor given to functional warehouse/workshop use and the first floor fitted as offices.

Location

Trinity Park is located adjacent to the A406 North Circular Road approximately midway between Hall Lane and Crooked Billet Roundabout accessed from the eastbound carriageway. The M11 motorway is located 2 miles east providing immediate access to the M25.

Located in the London Borough of Waltham Forest and situated 10 miles (16 km) northeast of Charing Cross. It has great rail links into Central London and is just a short drive from multiple stations. There are also a number of supermarkets in close proximity by foot. This, together with dedicated parking spaces, make these units a prime opportunity for business.

Viewings

Strettons
Waltham House, 11 Kirkdale Road, London, E11 1HP
Abas Anwar: 07803 850 230

Service Charge

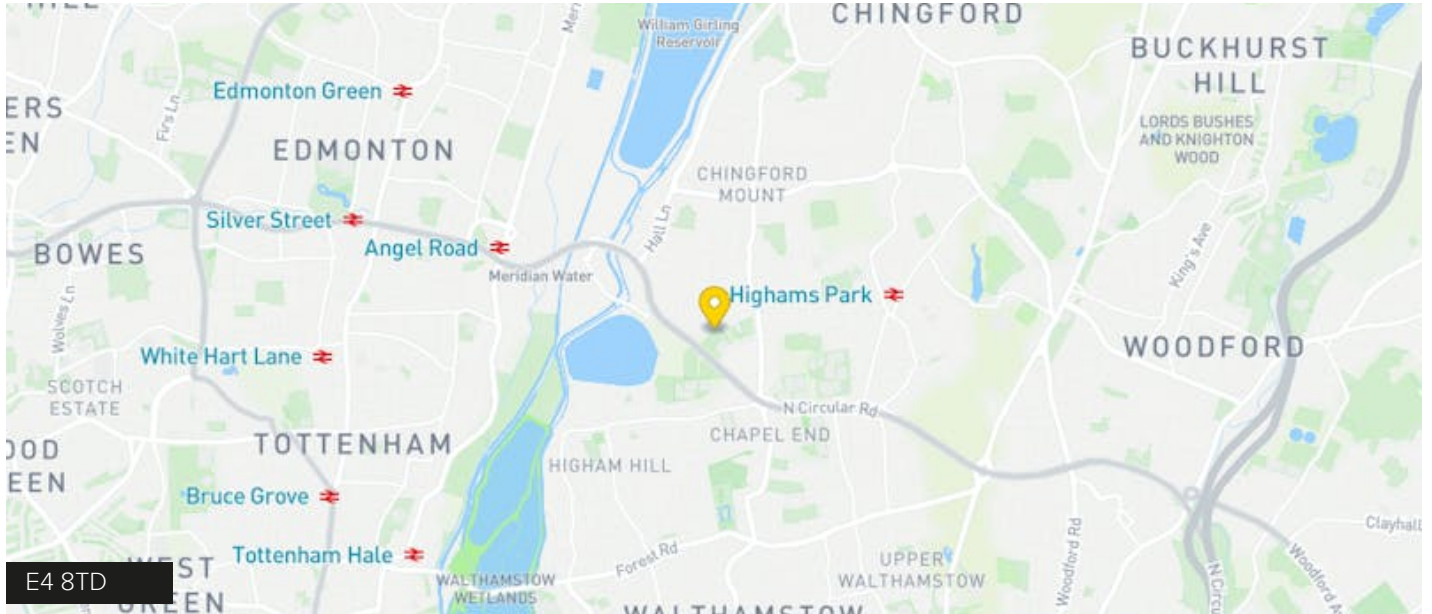
TBC

Business Rates

London Borough of Waltham Forest.
Interested parties are advised to make their own inquiries with the Local Authority.

Chingford

Avocet - Unit 3, Trinity Business Park, Trinity Way, London, E4 8TD



Configuration

Upon Enquiry

Tenure

New Lease

EPC

C (57)

VAT

Applicable

Contacts

NOWSHER ALAM

07967776358

nowsher.alam@strettons.co.uk

Further Information

[View on our website](#)

[Floor Plans](#)

Strettons and their clients give notice that: 1. They are not authorised to make or give any representations or warranties in relation to the property either here or elsewhere, either on their own behalf or on behalf of their client or otherwise. They assume no responsibility for any statement that may be made in these particulars. These particulars do not form part of any offer or contract and must not be relied upon as statements or, representations of fact. 2. Any areas, measurements or distances are approximate. The text, photographs and plans are for guidance only and are not necessarily comprehensive. It should not be assumed that the property has all necessary planning, building regulation or other consents and the Agents have not tested any services, equipment or facilities. Purchasers must satisfy themselves by inspection or otherwise. Generated on 19/06/2024