

135 Rushdale Road, Meers7

Sheffield

Guide Price £240,000 - £250,000



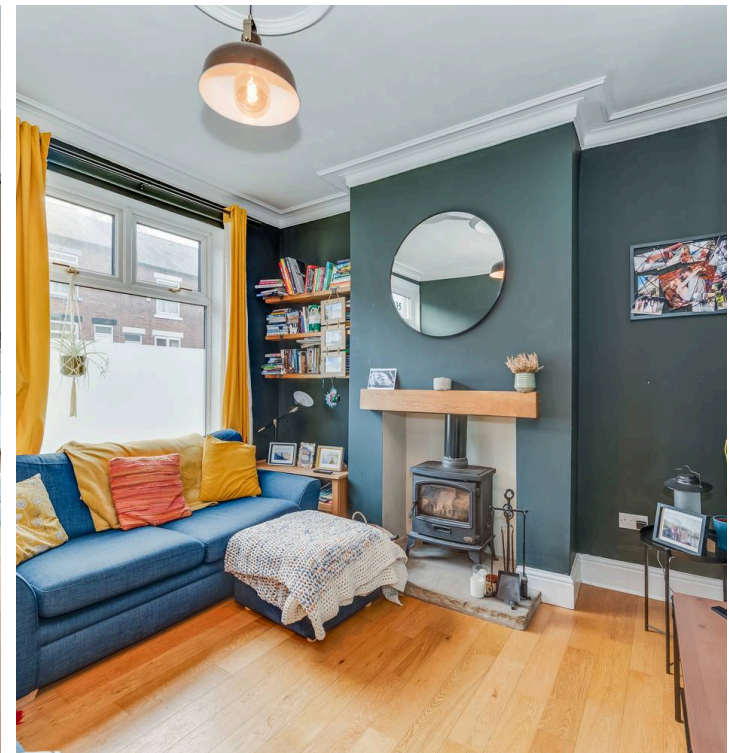
# 135 Rushdale Road

Meers7, Sheffield

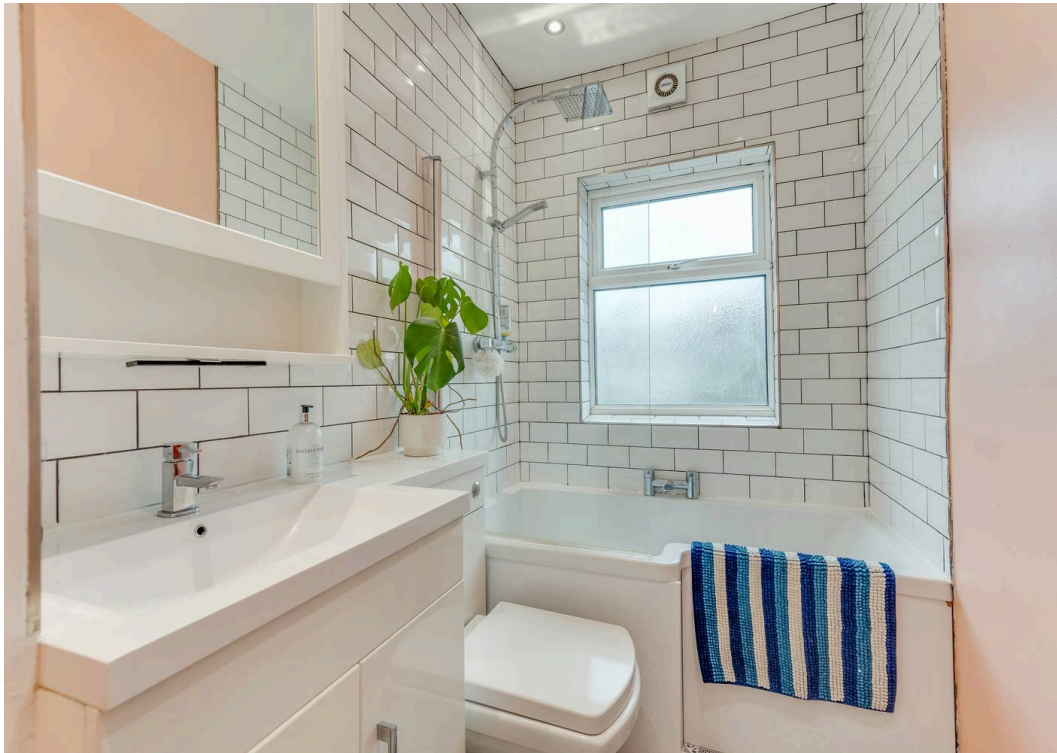
This stunning three bedroom Victorian terraced home is beautifully presented throughout and offers an exceptional standard of accommodation across three spacious floors, totalling an impressive 1,059 square feet. The property is situated on a well sought after residential road in the very heart of ultra popular Meersbrook, making it ideal for professional couples, first time buyers or young families looking for a vibrant community setting. The ground floor features a welcoming sitting room with a charming log burning stove and a newly fitted built-in kitchen that seamlessly blends modern convenience with period character. Upstairs, you will find three well proportioned bedrooms and a stylish, newly fitted bathroom, all finished to a high standard. The home benefits from a contemporary yet homely feel throughout, with tasteful décor and thoughtful touches that set it apart.

Council Tax band: A Tenure: Leasehold

- STUNNING THREE BEDROOM VICTORIAN TERRACED HOME
- NEWLY FITTED BUILT IN KITCHEN AND BATHROOM TOGETHER WITH LOG BURNING STOVE TO THE SITTING ROOM
- WELL SOUGHT AFTER RESIDENTIAL ROAD WITHIN THE VERY HEART OF ULTRA POPULAR MEERSBROOK
- PRIVATE REAR SUNNY LOW MAINTENANCE DECKED GARDEN ALONG WITH EASY ON ROAD PARKING TO THE FRONT
- THREE FLOORS OF ACCOMMODATION TOTALLING AN IMPRESSIVE 1,059 SQ FEET
- PITCH PERFECT FOR THE PROFESSIONAL COUPLE FIRST BUY OR YOUNG FAMILY ALIKE
- VIEWING ESSENTIAL TO SEE THE FINISH ON OFFER BY THIS GORGEOUS PROPERTY



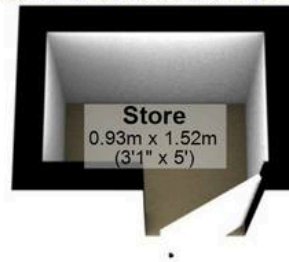






### Outbuilding

Approx. 1.4 sq. metres (15.2 sq. feet)



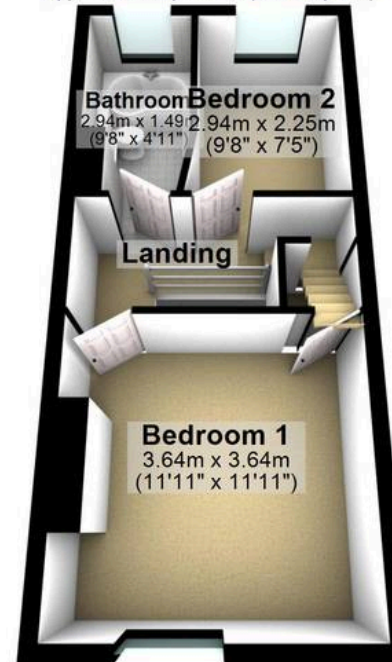
### Ground Floor

Approx. 30.2 sq. metres (325.5 sq. feet)



### First Floor

Approx. 30.2 sq. metres (325.5 sq. feet)



### Second Floor

Approx. 19.8 sq. metres (212.9 sq. feet)



### Cellar

Approx. 16.7 sq. metres (179.8 sq. feet)



Total area: approx. 98.4 sq. metres (1059.0 sq. feet)

All measurements are approximate  
 Plan produced using PlanUp.

**135 Rushdale Road**