



WHITEHORNES

Buy. Sell. Let. Relax!

0114 268 8533
info@whitehorses.com
www.whitehorses.com

30 Glentilt Road, Carter Knowle

Sheffield

Offers in Region of £325,000

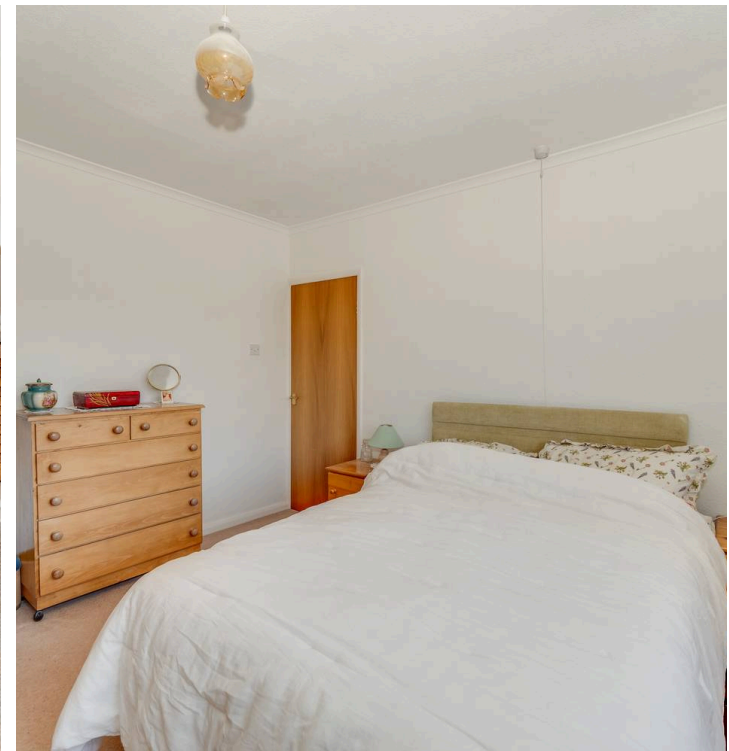
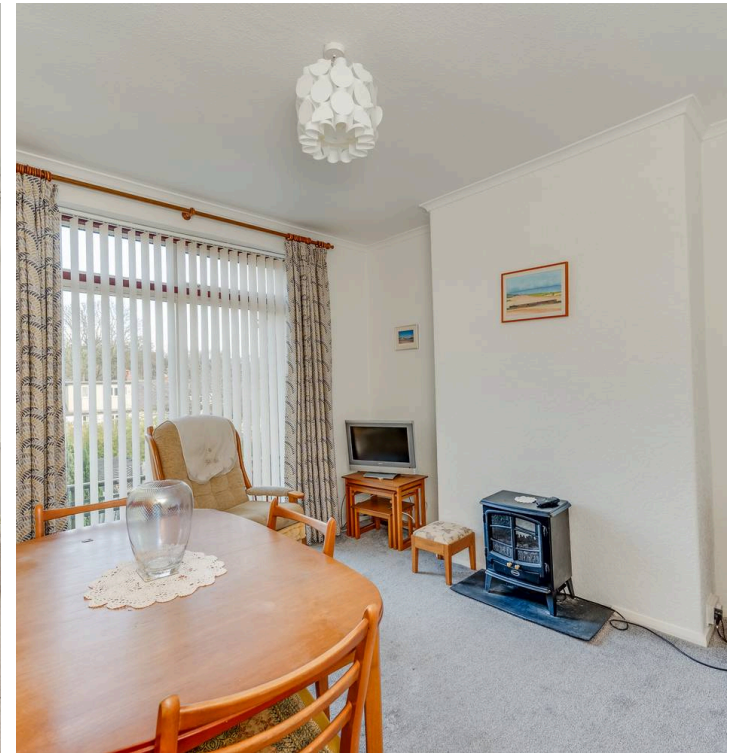
30 Glentilt Road

Carter Knowle, Sheffield

This beautifully presented three-bedroom, semi-detached bay windowed family home offers an excellent opportunity for first-time buyers or young families seeking a move-in ready property in the heart of the ever-popular Carter Knowle area. Spanning two floors and totalling an impressive 896 square feet, this well-maintained home features a welcoming entrance hallway leading to a spacious lounge with a striking bay window that allows natural light to flood the room. The modern fitted kitchen is thoughtfully designed with ample storage and workspace, seamlessly connecting to a bright dining area perfect for family meals or entertaining guests. Upstairs, you will find three generously sized bedrooms, each providing comfortable accommodation and flexibility for growing families or those working from home.

Council Tax band: C Tenure: Leasehold

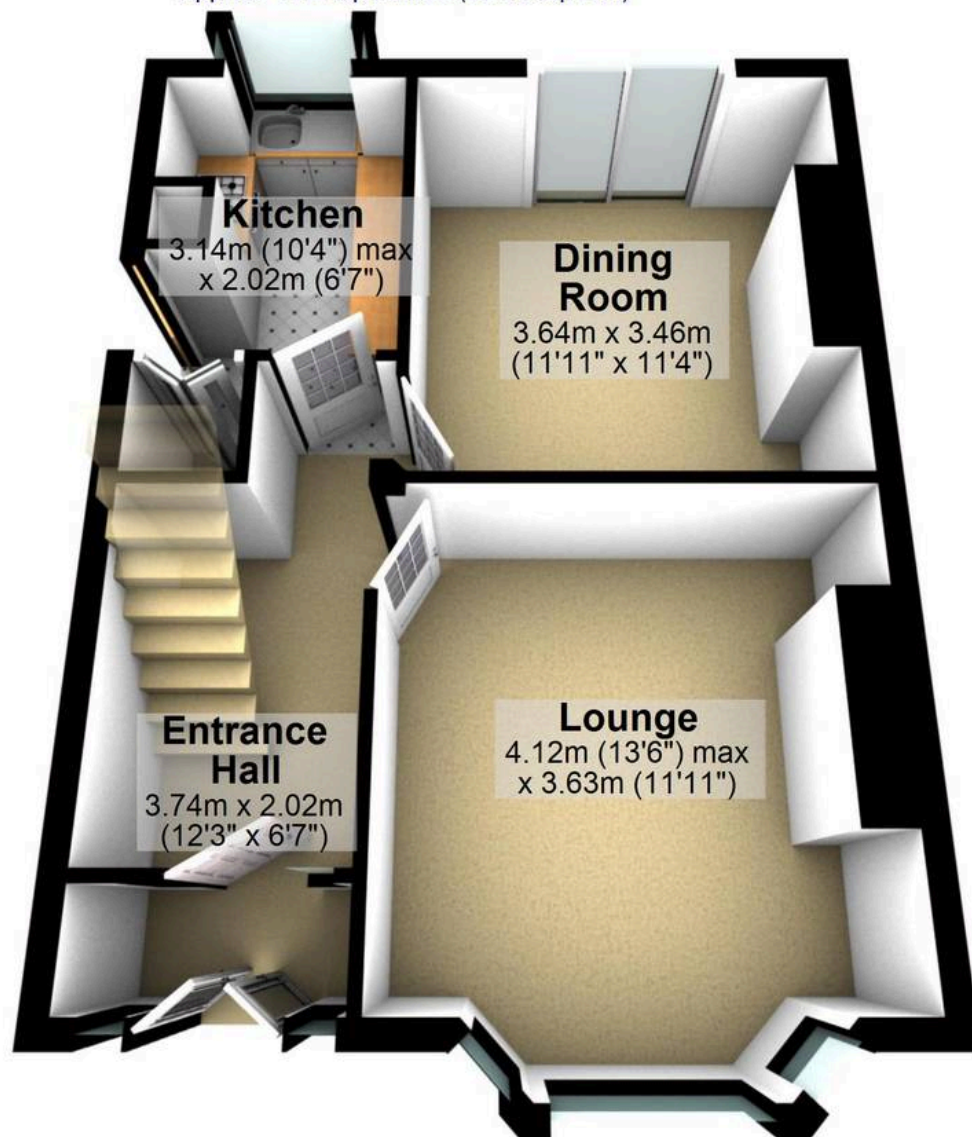
- THREE BEDROOMED SEMI-DETACHED BAY WINDOWED FAMILY HOME
- IDEAL HOME FOR FIRST TIME BUYERS OR YOUNG FAMILIES ALIKE
- TWO FLOORS OF ACCOMMODATION TOTALLING AN IMPRESSIVE 896 SQ FT
- A SHORT STROLL TO NUMEROUS LOCAL AMENITIES INCLUDING CARTERKNOWLE PARK AND SHOPS AND EATERIES ALONG ABBEYDALE ROAD
- PRIVATE ENCLOSED REAR GARDEN AND EASY AMPLE OFF STREET PARKING
- NESTLED IN THE HEART OF ULTRA-POPULAR CARTER KNOWLE
- REPUTABLE LOCAL SCHOOLS INCLUDING CARTER KNOWLE JUNIORS AND MERCIA SECONDARY SCHOOL
- VIEWING ESSENTIAL TO SEE FULL POTENTIAL ON OFFER





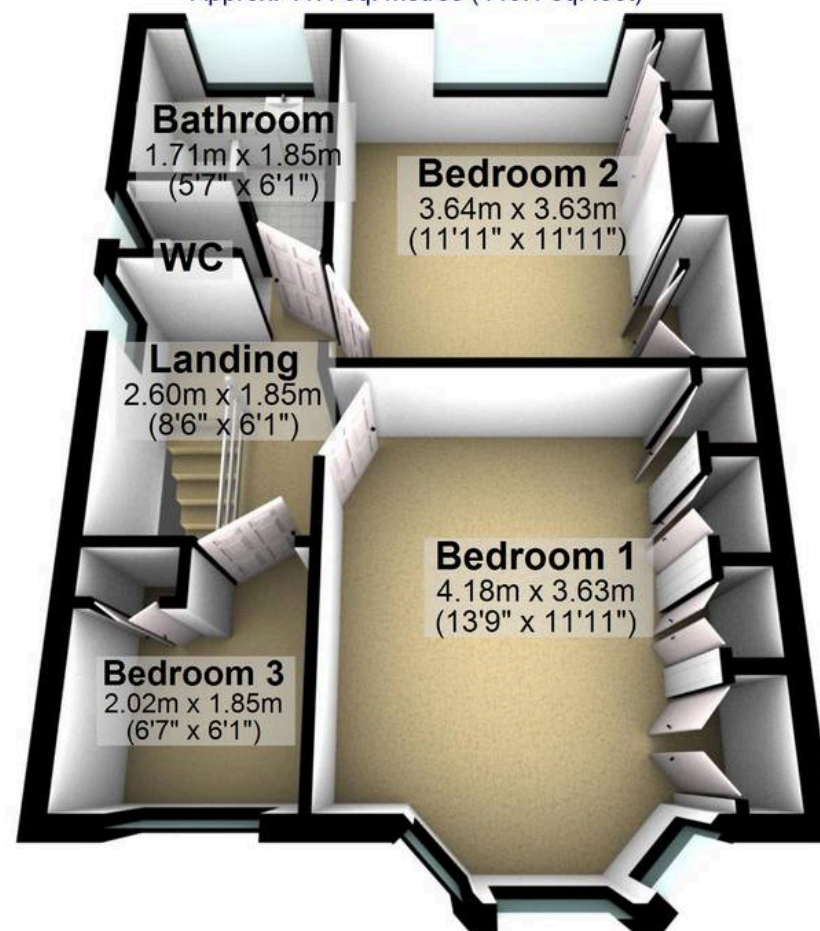
Ground Floor

Approx. 41.9 sq. metres (451.4 sq. feet)



First Floor

Approx. 41.4 sq. metres (445.1 sq. feet)



Total area: approx. 83.3 sq. metres (896.6 sq. feet)

All measurements are approximate
Plan produced using PlanUp.

30 Glentilt Road



WHITEHORNES

Buy. Sell. Let. Relax!

0114 268 8533
info@whitehorns.com
www.whitehorns.com