



WHITEHORNES

Buy. Sell. Let. Relax!

0114 268 8533
info@whitehorns.com
www.whitehorns.com

59 Halliwell Crescent, Sheffield

Sheffield

Offers in Region of **£142,500**

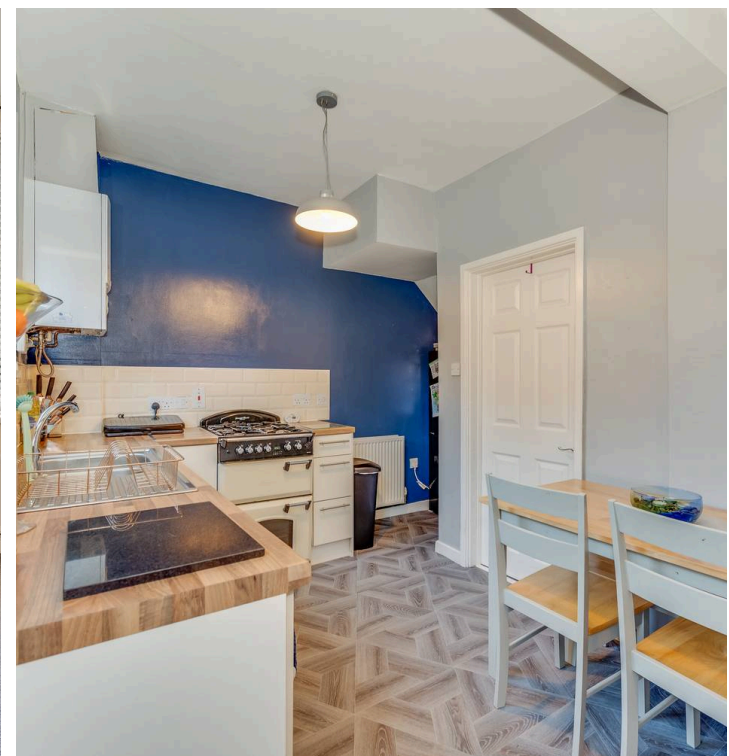
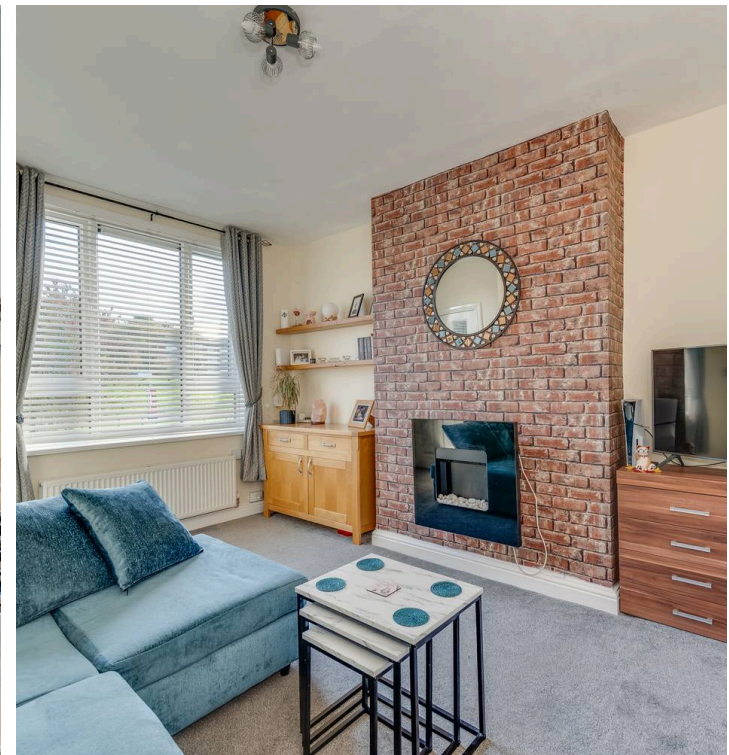
59 Halliwell Crescent

Sheffield, Sheffield

Nestled within the heart of established and well regarded residential suburb, this stunning two-bedroom mid-terraced house presents an opportunity for those seeking contemporary comfort. Boasting two double bedrooms, this lovely home spans an impressive 657 square feet across two generously spacious floors. Internally finished to a really high standard by the current vendor, this property enjoys a modern and contemporary feel throughout. The smartly presented internal space is further complemented by a private rear garden, larger than expected, featuring a combination of decking and a well-maintained grassed area - providing the perfect. Situated conveniently close to an array of local amenities, central Sheffield, and the Northern General Hospital, this residence is an ideal choice for first-time buyers, professional couples, or young families alike. With easy on-road parking available to the front, this home offers both style and Council Tax band: A

Tenure: Freehold

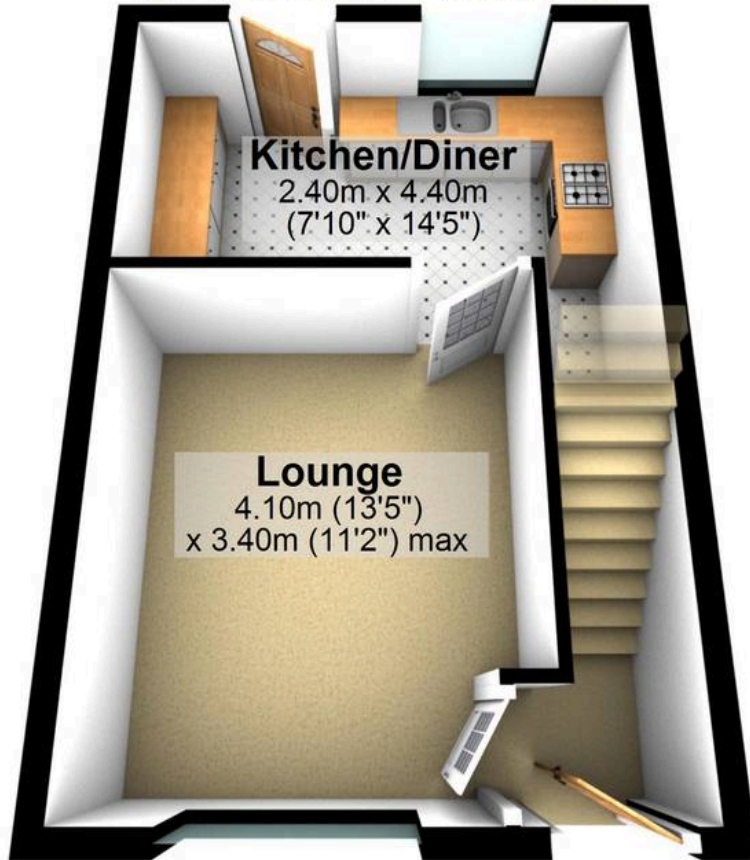
- STUNNING TWO DOUBLE BEDROOM MID TERRACED HOME
- FINISHED INTERNALLY TO A HIGH STANDARD THROUGHOUT BY THE CURRENT VENDOR TO CREATE THIS CONTEMPORARY FEEL
- TWO DECEPTIVELY SPACIOUS FLOORS OF ACCOMMODATION TOTALLING AN IMPRESSIVE 657 SQ FEET





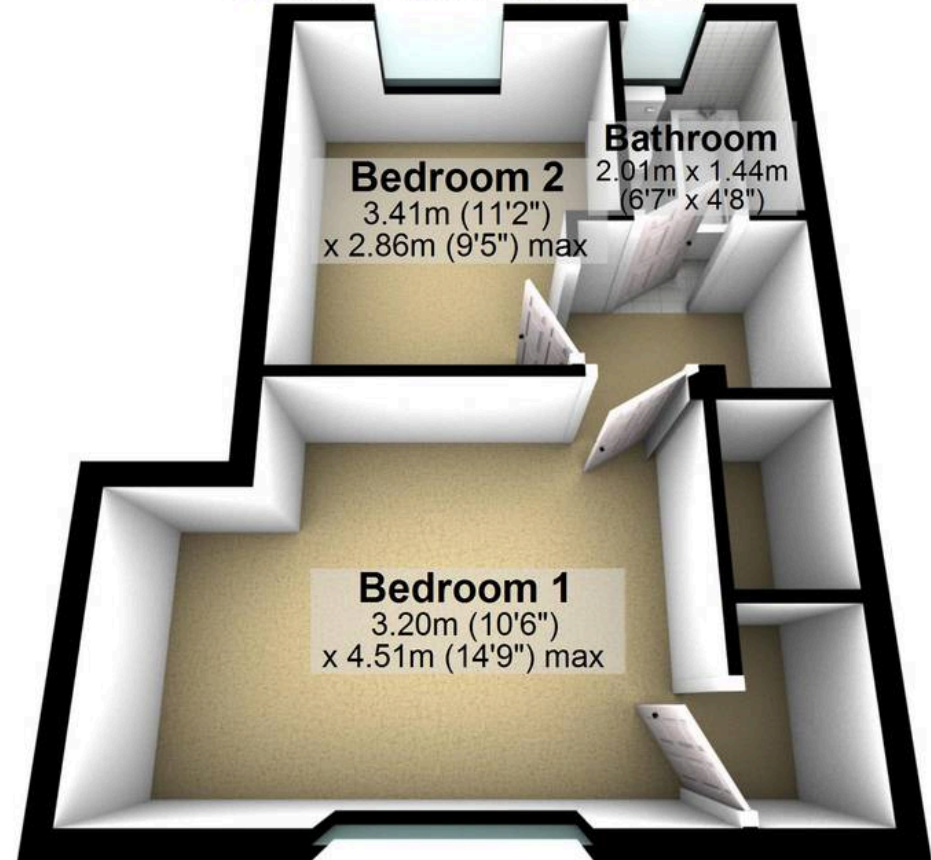
Ground Floor

Approx. 29.0 sq. metres (312.3 sq. feet)



First Floor

Approx. 32.0 sq. metres (344.9 sq. feet)



Total area: approx. 61.1 sq. metres (657.2 sq. feet)

All measurements are approximate
Plan produced using PlanUp.

59 Halliwell Crescent, Sheffield



WHITEHORNES

Buy. Sell. Let. Relax!

0114 268 8533
info@whitehorns.com
www.whitehorns.com