

376 Brincliffe Edge Road, Brincliffe

Sheffield

Guide Price £450,000-£475,000

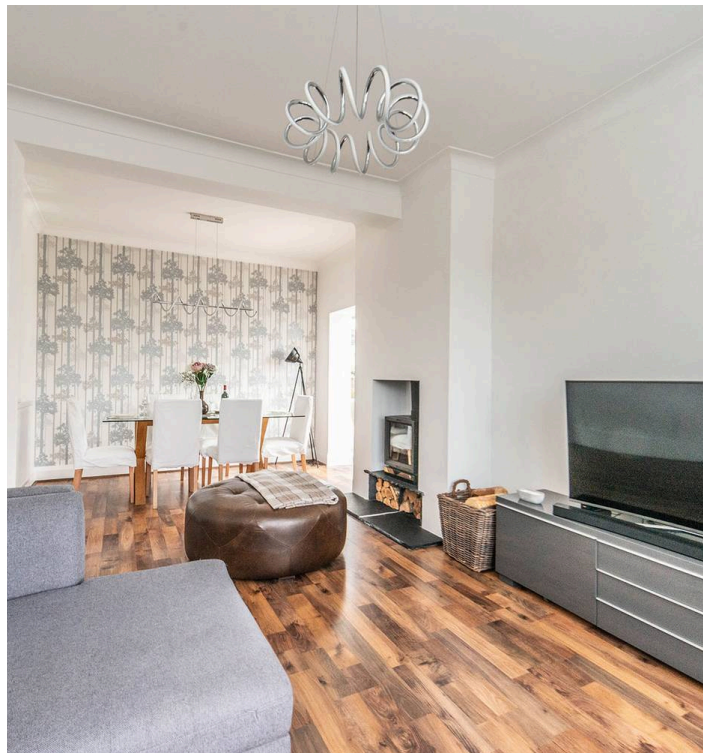
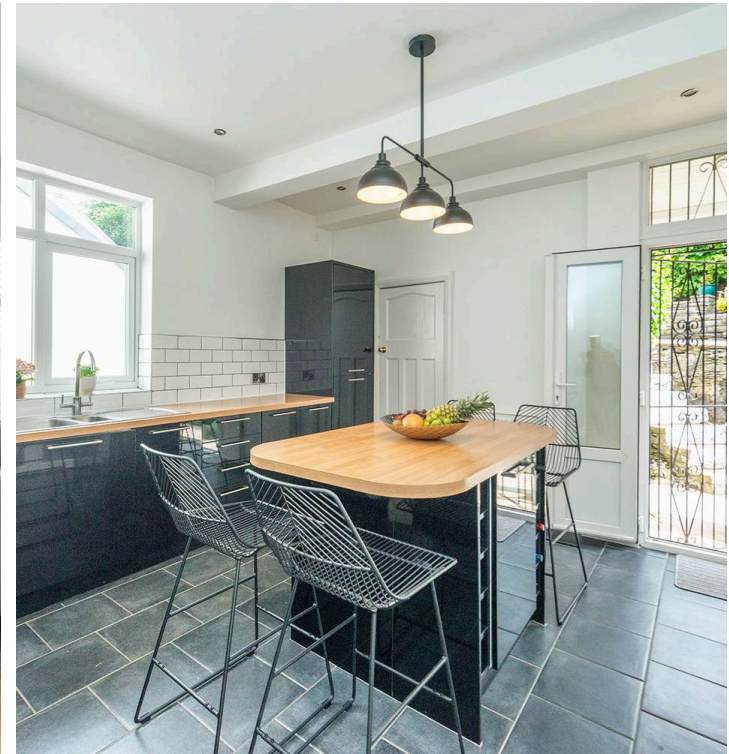
376 Brincliffe Edge Road

Brincliffe, Sheffield

An incredibly rare opportunity has arisen to purchase this outstanding, immaculately presented and very deceptive, two double bedroomed, double fronted, two bathroomed, detached property. Having been tastefully finished internally to a very high standard by the current vendors with absolutely no expense spared together with an extended side beautiful sun room. Number 376 enjoys a contemporary feel that has been cleverly designed to cater perfectly for those looking to down size and utilise the ground floor or the family market in equal measures. With super spacious and light accommodation across two floors that total an impressive 1,225 sq feet, it's easy to say that viewing is absolutely essential to fully appreciate the size and style on offer by this beautiful property. Located towards the top of this well regarded residential road in the very heart of Brincliffe.

Council Tax band: D Tenure: Freehold

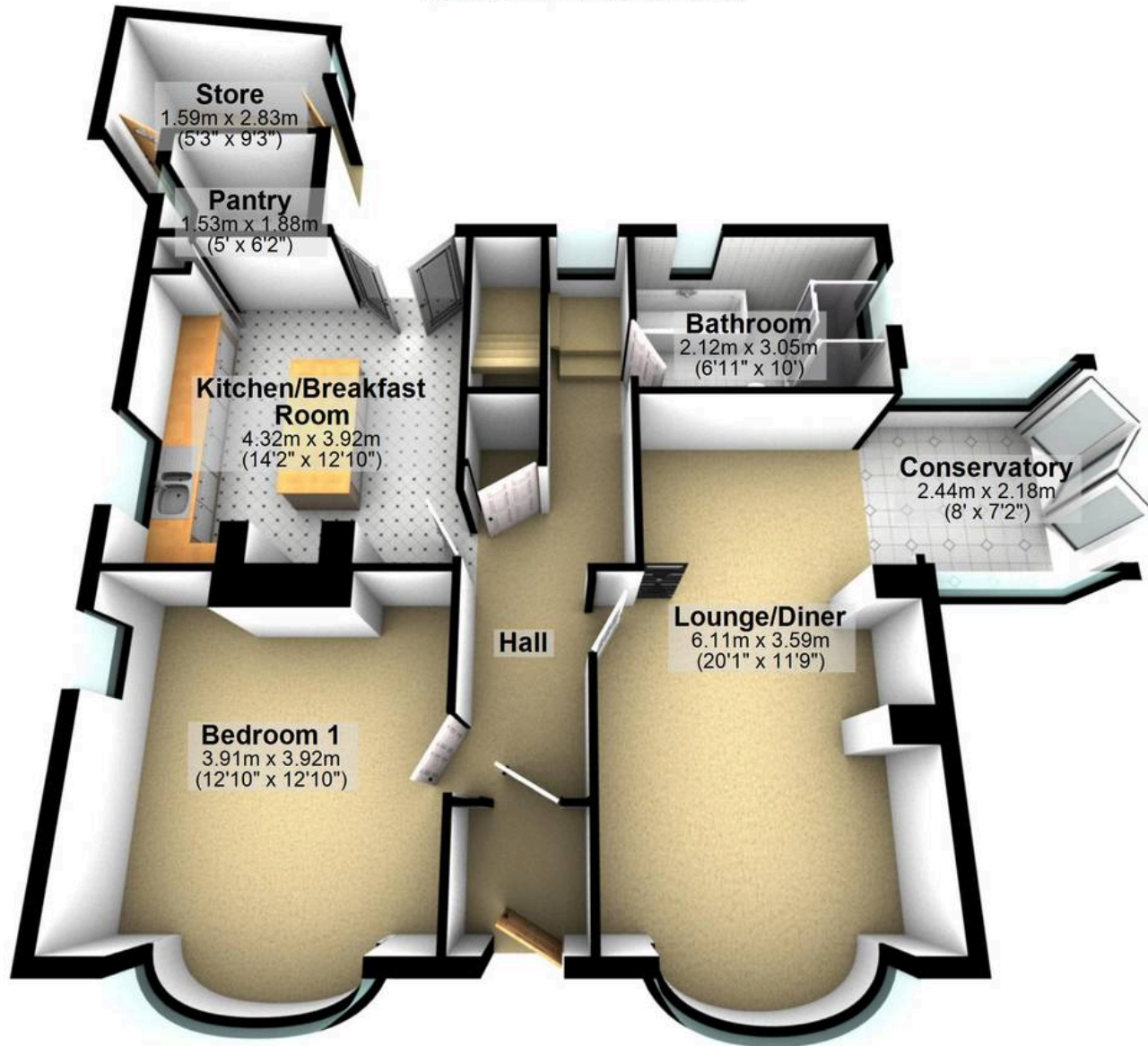
- SENSATIONAL DOUBLE FRONTED TWO DOUBLE BEDROOM TWO BATHROOMED DETACHED HOME
- SLIGHTLY ELEVATED POSITION ENSURING PRIVACY AND SOME INCREDIBLE VIEWS TO THE FRONT
- SPACIOUS LIGHT AND VERSATILE ACCOMMODATION ACROSS TWO FLOORS TOTALLING AN IMPRESSIVE 1,225 SQ FEET
- TASTEFULLY FINISHED INTERNALLY TO A SUPER HIGH STANDARD THROUGHOUT BY THE CURRENT VENDORS WITH NO EXPENSE SPARED
- EXCELLENT SCHOOLING CATCHMENTS INCLUDING GREYSTONES JUNIORS AND BOTH HIGH STORRS/MERCIA SECONDARY
- PROFESSIONALLY LANDSCAPED GARDENS TO THE REAR AND SIDE OFFERING A PRIVATE RETREAT





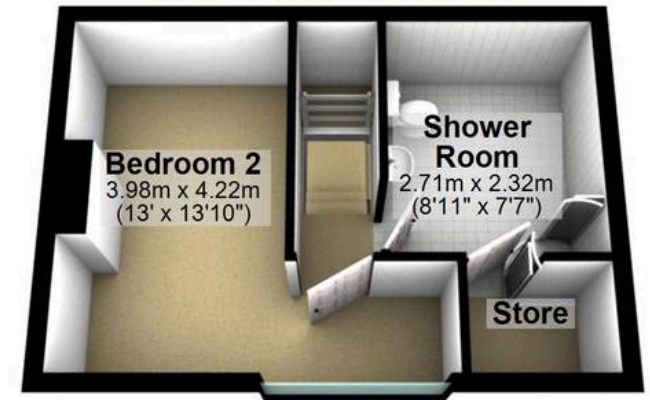
Ground Floor

Approx. 90.6 sq. metres (975.7 sq. feet)



First Floor

Approx. 23.2 sq. metres (249.7 sq. feet)



Total area: approx. 113.8 sq. metres (1225.5 sq. feet)

All measurements are approximate
Plan produced using PlanUp.