



**WHITEHORNES**  
Buy. Sell. Let. Relax!  
0114 268 8533  
info@whitehorns.com  
www.whitehorns.com

75 Ranby Road, Endcliffe Park

Sheffield

Guide Price £400,000£425,000



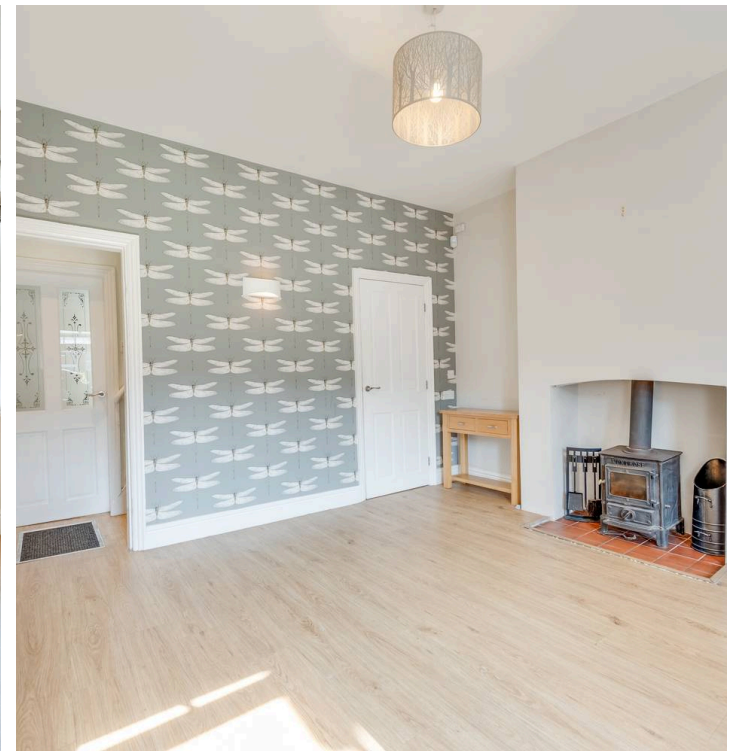
# 75 Ranby Road

Endcliffe Park, Sheffield

An absolutely fabulous three double bedroom, two bathroom, bay window, Victorian terrace home. With a double rear off shot, open plan fitted dining kitchen with access to the private sunny garden that has no through fare from neighbouring properties and easy on road parking to the front. Offering up four super spacious floors of accommodation including a fully converted basement that total an impressive 1,470 sq feet framed by a wonderful loft master bedroom that enjoys its own en-suite. Retaining numerous period features, character and charm associated with a property this era and blending them with a modern finish that is sure to be of interest to the young family and professional couple alike it's easy to say that viewing is absolutely essential to fully appreciate the size and style on offer by this gorgeous home.

Council Tax band: B Tenure: Leasehold

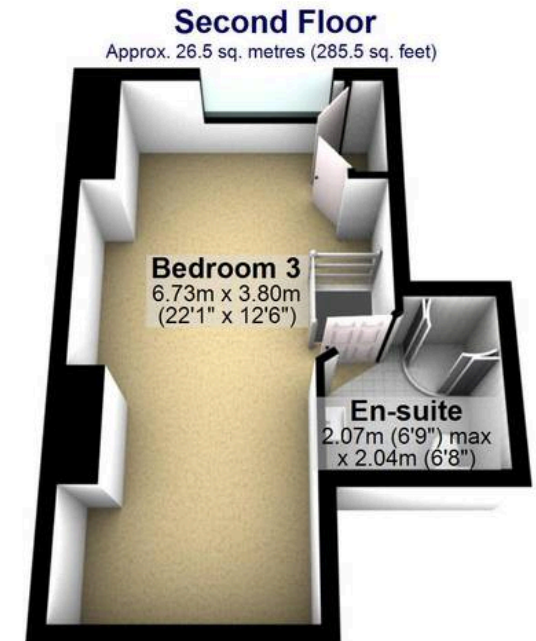
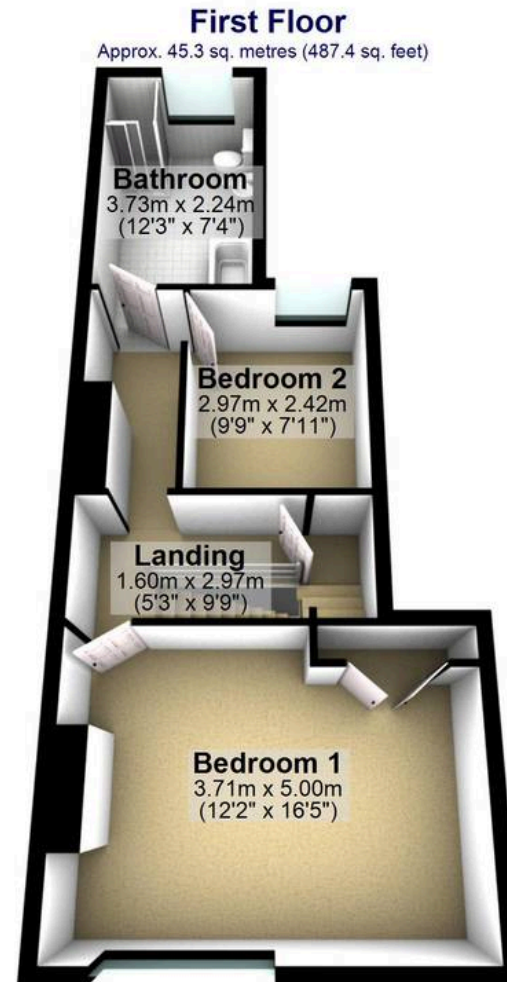
- STUNNING THREE DOUBLE BEDROOM TWO BATH/SHOWER ROOMED PERIOD VICTORIAN TERRACED
- FULLY CONVERTED BASEMENT WITH UTILITY ROOM AND GAMES ROOM
- FOIR BEAUTIFUL FLOORS OF ACCOMMODATION TOTALLING AN IMPRESSIVE 1,470 SQ FEET
- WELL SOUGHT AFTER RESIDENTIAL ROAD IN THE HEART OF ENDCLIFFE WITH THE PARK AT THE END OF THE ROAD
- EXCELLENT SCHOOLING CATCHMENTS INCLUDING BOTH GREYSTONES JUNIORS AND HIGH STORRS SECONDARY











Total area: approx. 136.6 sq. metres (1470.0 sq. feet)

All measurements are approximate  
Plan produced using PlanUp.