



WHITEHORSES
Buy. Sell. Let. Relax!
0114 268 8533
info@whitehorses.com
www.whitehorses.com

27 Empire Road, Nether Edge

Sheffield

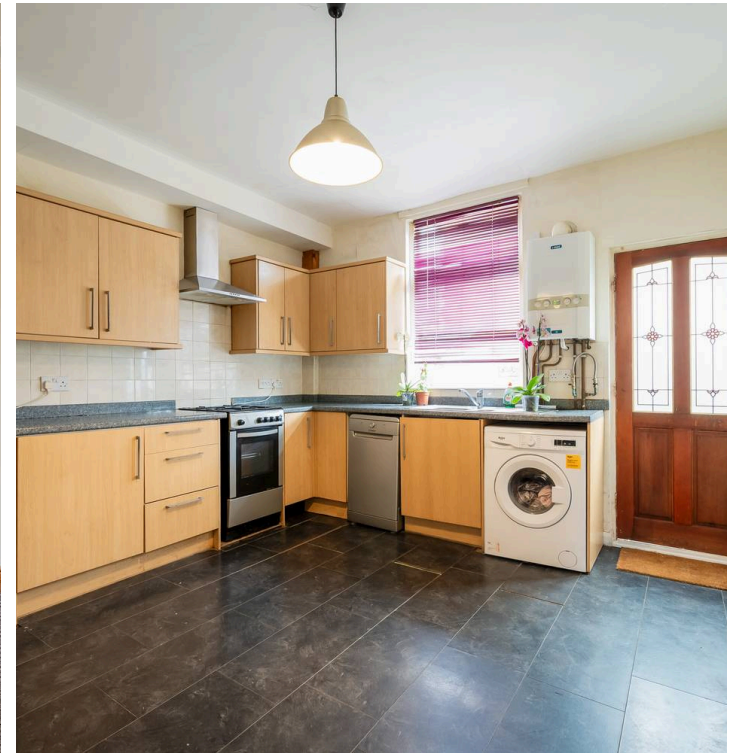
Guide Price £220,000 - £230,000

27 Empire Road

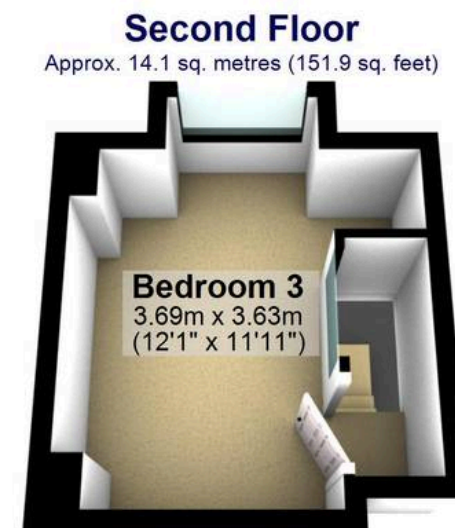
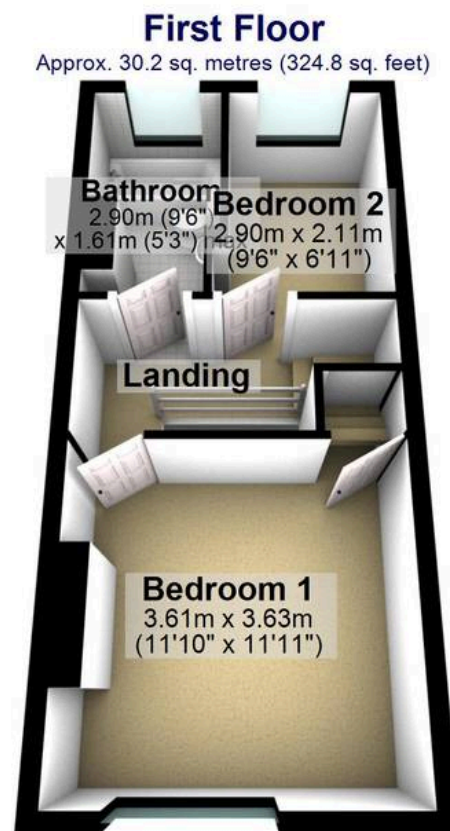
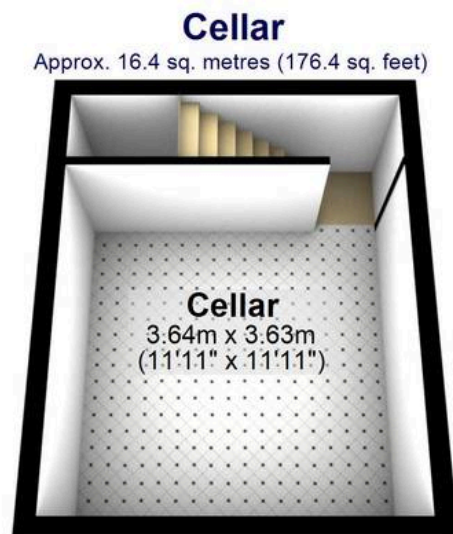
Nether Edge, Sheffield

This absolutely lovely three-bedroom bay windowed Victorian mid-terrace property is a prime opportunity, available to market with no upward chain involved and vacant on completion. Nestled in the heart of the ultra-popular Nether Edge on the southwest of the city, in the heart of Sheffield 7 suburb, this charming home spans three floors of accommodation, totalling an impressive 979 sq feet. With excellent local school catchments, including Mercia Secondary, this property is perfect for first-time buyers, professional couples, or young families. Outside, the property boasts easy on-road parking to the front and a lovely rear sunny garden.. Situated just a short stroll away from fashionable Abbeydale Road with its independent cafes, amenities, and shops, residents will enjoy the convenience of this vibrant area. Additionally, the property is close to parks, Sharrow Vale, hospitals, and universities Council Tax band: A Tenure: Leasehold

- ABSOLUTELY LOVELY THREE BE BEDROOM BAY WINDOWED VICTORIAN MID TERRACE PROPERTY
- AVAILABLE TO MARKET WITH NO UPWARD CHAIN INVOLVED AND VACANT ON COMPLETION
- HEART OF ULTRA POPULAR NETHER EDGE ON THE SOUTH WEST OF THE CITY IN HEART OF SHEFFIELD 7 SUBURB
- THREE FLOORS OF ACCOMMODATION TOTALLING AN IMPRESSIVE 979 SQ FEET
- EXCELLENT LOCAL SCHOOL CATCHMENTS INCLUDING MERCIA SECONDARY
- PERFECT FOR THE FIRST TIME BUYERS PROFESSIONAL COUPLE OR YOUNG FAMILY
- EASY ON ROAD PARKING TO THE FRONT AND SUNNY REAR GARDEN







Total area: approx. 91.0 sq. metres (979.9 sq. feet)

All measurements are approximate
Plan produced using PlanUp.