

39 Wostenholm Road, Nether Edge

Sheffield

Guide Price £475,000 - £495,000

39 Wostenholm Road

Nether Edge, Sheffield

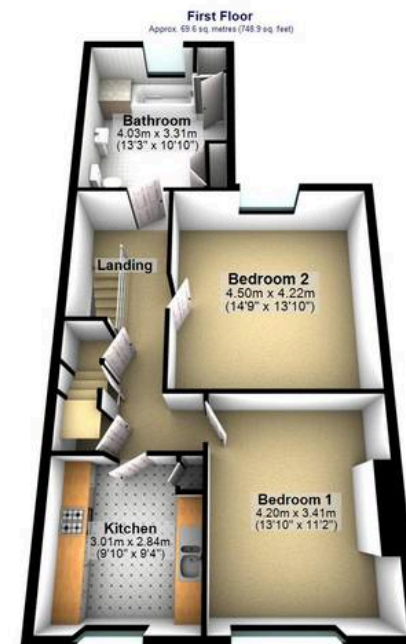
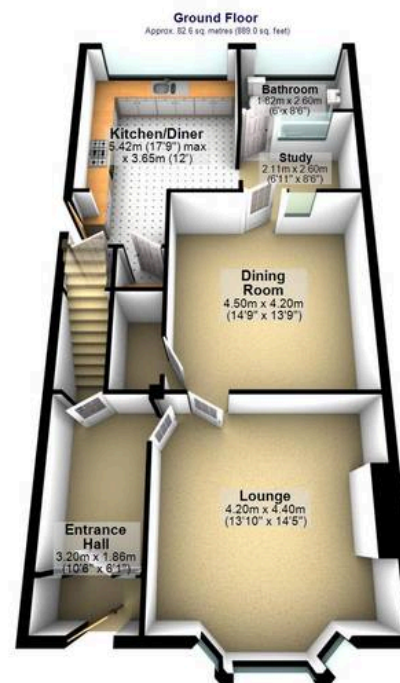
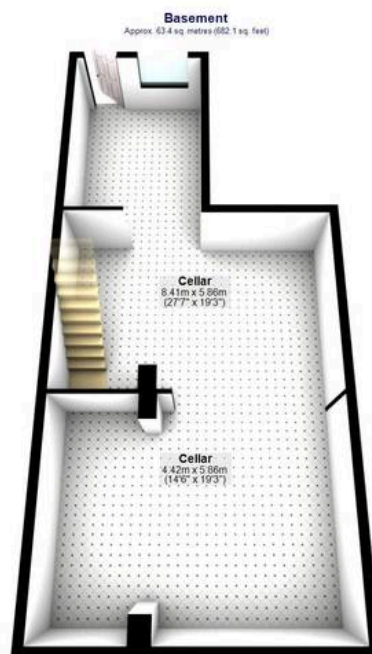
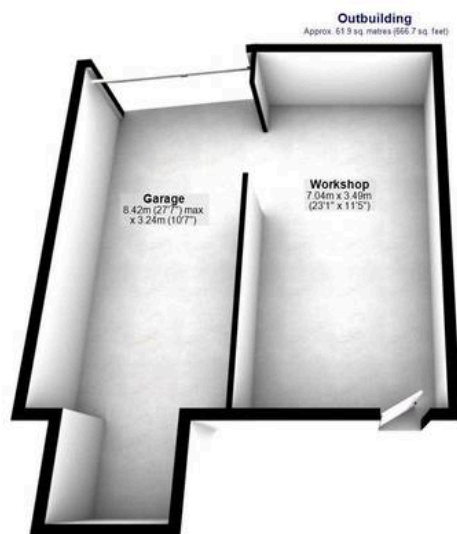
A once in a lifetime opportunity has arisen to purchase this fabulous and in many ways unique, four double bedroom, two bathroom, bay window, period semi detached family home. Currently used as two separate apartments but easily converted back to one family home as it was originally constructed for and no need for planning permission to do this. Enjoying three super spacious and light floors of accommodation that total an impressive 3,379 sq feet that retain a wealth of the original period character and charm associated with a property from this era. With the huge added bonus of a large detached workshop (formally the coaching house) that has its own private entrance to rear and could be transformed in to separate fully self contained annex if required and subject to planning permission. There is also a full basement that has been partially converted that allowed the new buyers to finish to their taste and add future value and internal rooms.

Council Tax band: C Tenure: Leasehold

- INCREDIBLY RARE OPPORTUNITY TO MARKET FOR A PROPERTY OF THIS SIZE AND CALIBRE
- CURRENTLY SPLIT IN TO TWO APARTMENTS BUT CAN EASILY BE TURNED BACK TO A FAMILY HOME WITH NO PLANNING REQUIRED
- LARGE WORKSHOP THATS RIPE FOR DEVELOPMENT WITH SEPERATE ACCESS FROM THE FRONT OF THE MAIN PROPERTY
- HUGE OPPORTUNITY TO FULLY CONVERT THE PART FINISHED CELLARS TO ADD FUTURE VALUE







Total area: approx. 313.9 sq. metres (3379.0 sq. feet)

All measurements are approximate
Plan produced using PlanUp