



WHITEHORSES

Buy. Sell. Let. Relax!

0114 268 8533
info@whitehorses.com
www.whitehorses.com

12 Fellview Close, Hathersage

Hope Valley

Guide Price **£385,000**

12 Fellview Close

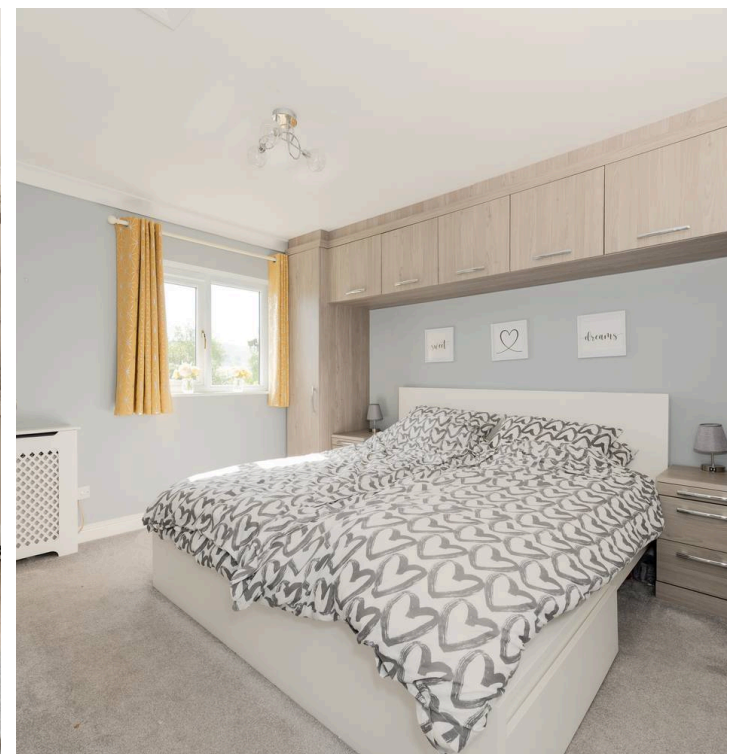
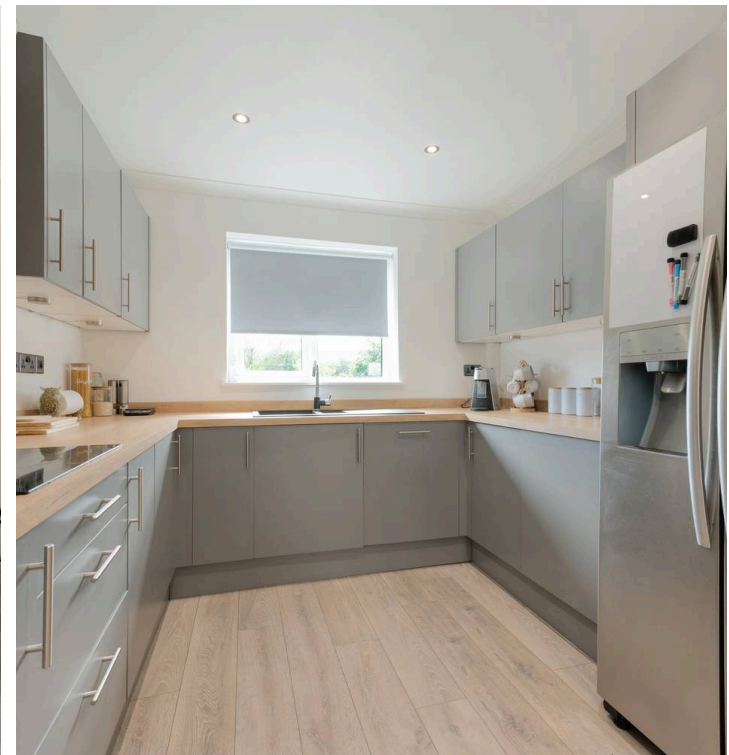
Hathersage, Hope Valley

GUIDE PRICE £385,000-£395,000 Nestled within the charming and sought-after Peak District village of Hathersage, this stunning three, double bedroom mid-terraced house boasts an exquisite stone-built facade that exudes traditional charm. Tastefully extended to the rear, the property offers an impressively spacious internal layout that simply must be viewed to be appreciated. Meticulously finished to the highest standards, no expense has been spared in creating a contemporary yet timeless living space. Situated in a quiet cul-de-sac, residents will enjoy the tranquillity of this location while being just a short walk away from independent cafes, eateries, shops, the train station, and an outdoor pool. Convenient commuting options to both Central Sheffield and Manchester further enhance the appeal of this property. Boasting over 1,000 square feet of living space across two superbly designed floors, this home offers comfortable and flexible accommodation to suit a variety of lifestyles. The private rear sunny garden is larger than expected and offers an opportunity to easily create a work from home office pod if required. The front of the property offers an off road designated parking bay for one vehicle and outstanding views over the picturesque Peak District, providing a backdrop of natural beauty to enjoy. Additionally, excellent school catchments make this an ideal property for young families. This property caters perfectly to the needs of young families and professional couples alike. Available to market with no upward chain involved.

Council Tax band: C

Tenure: Freehold

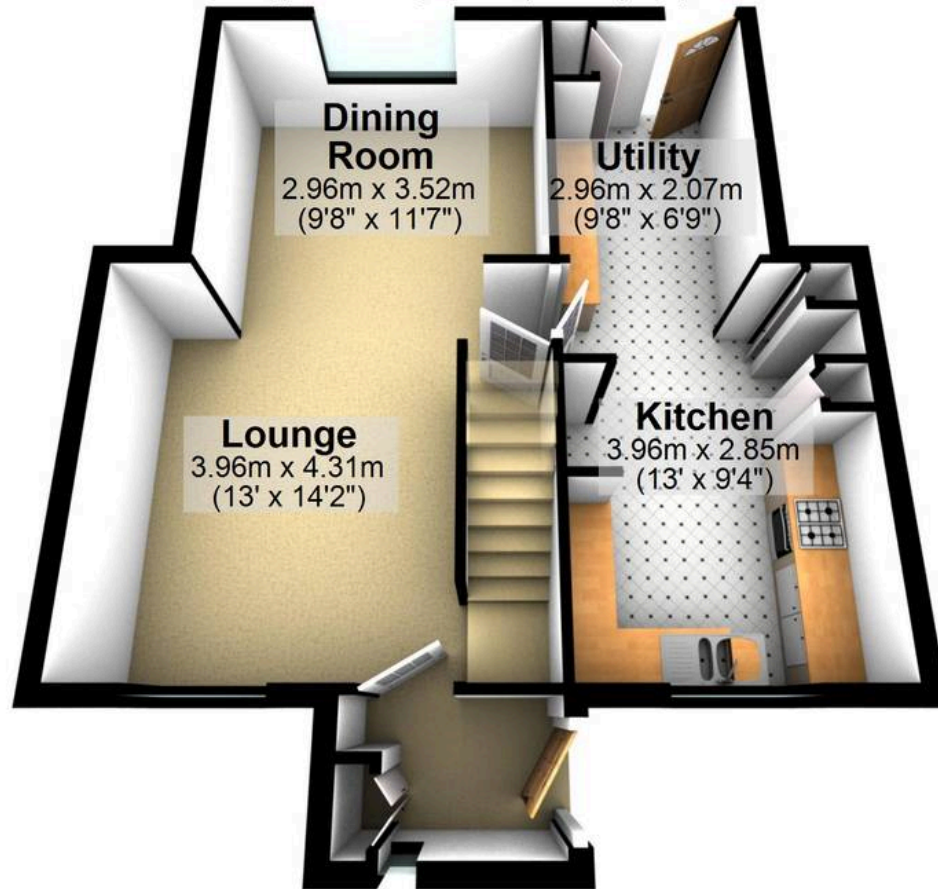
- STUNNING THREE DOUBLE BEDROOM STONE BUILT COTTAGE TERRACE
- TASTEFULLY EXTENDED TO THE REAR TO OFFER AN





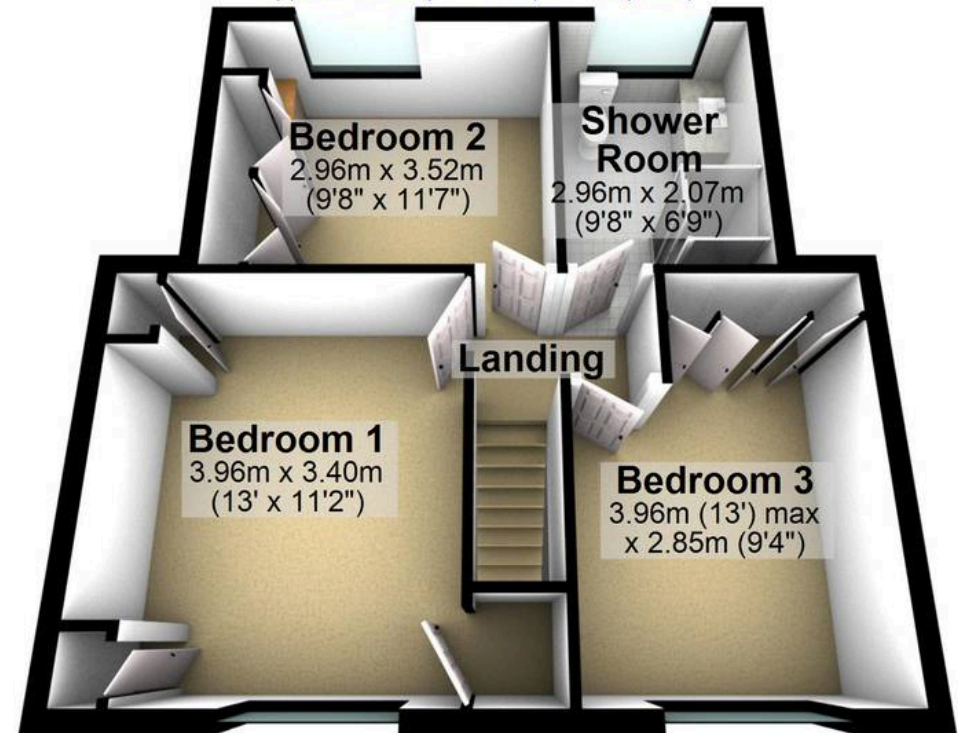
Ground Floor

Approx. 48.6 sq. metres (523.4 sq. feet)



First Floor

Approx. 46.2 sq. metres (497.0 sq. feet)



Total area: approx. 94.8 sq. metres (1020.4 sq. feet)

All measurements are approximate
Plan produced using PlanUp.