



WHITEHORSES

Buy. Sell. Let. Relax!

0114 268 8533
info@whitehorses.com
www.whitehorses.com

933 Ecclesall Road, Sheffield

Sheffield

Guide Price £335,000

933 Ecclesall Road

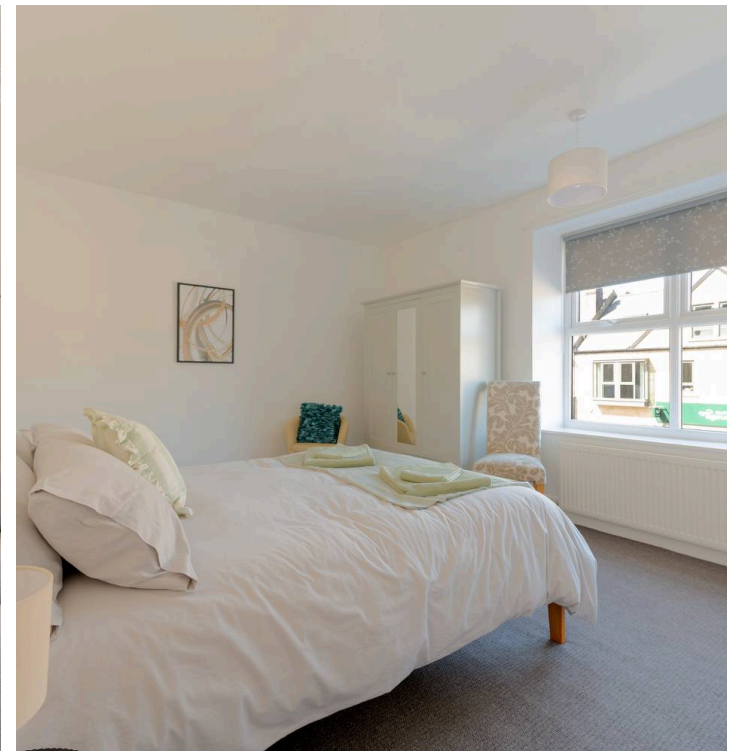
Sheffield, Sheffield

GUIDE PRICE £335,000 - £345,000 Located in the heart of ultra-popular Ecclesall is this three bedroomed mid-terraced Victorian property. This deceptively large property has a modern feel throughout while still retaining original features. Totalling an impressive 1,545 Sq Ft of accommodation which briefly consists of a light and bright lounge, well appointed dining room, off shot kitchen, three double bedrooms and a family bathroom. To the outside is a fantastic private, no through garden. Boasting an ideal location, Endcliffe and Bingham parks are a short stroll away, independent cafes, eateries and shops are within Banner Cross and Sharrow Vale, universities, hospitals are all close by and The Peak District is on the doorstep. Falling within catchment for Ofsted rated excellent Greystones Primary and High Storrs secondary it's easy to say that viewing is essential to fully appreciate this fabulous property.

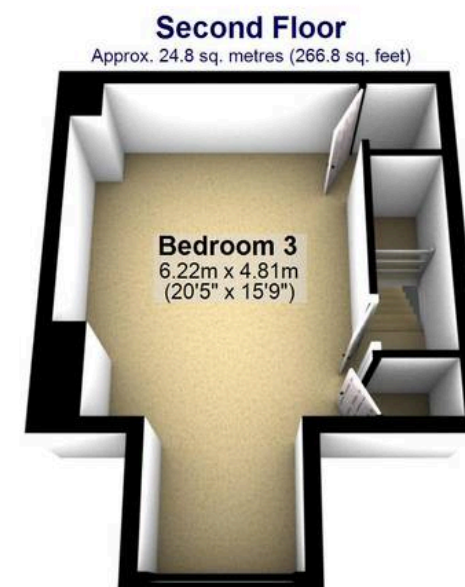
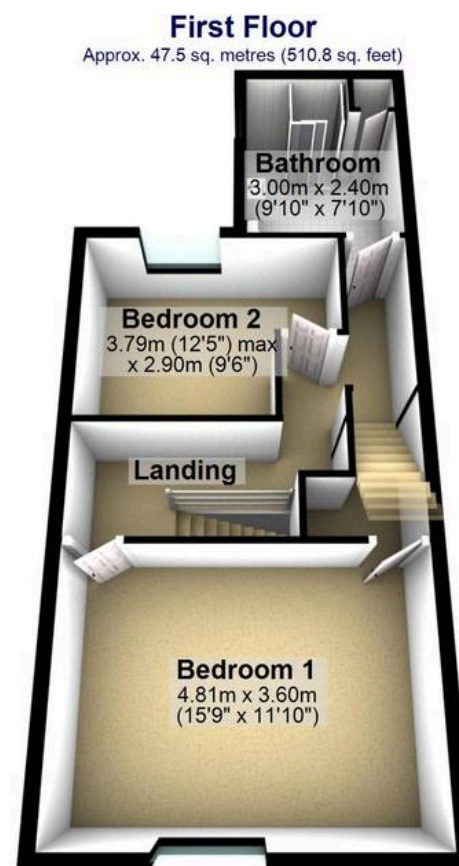
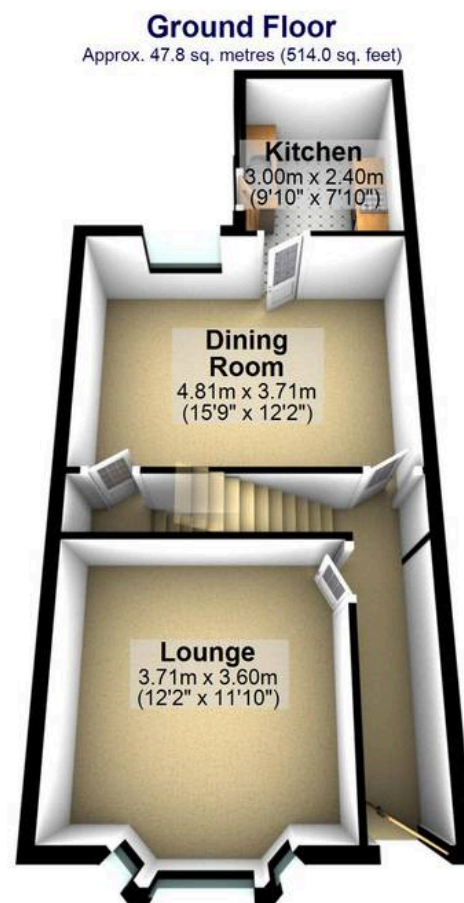
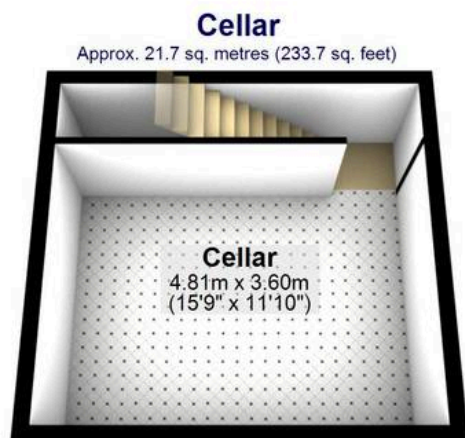
Council Tax band: C

Tenure: Leasehold

- THREE BEDROOMED MID-TERRACED VICTORIAN PROPERTY
- CLOSE TO NUMEROUS INDEPENDANT AMENITIES WITHIN BANNER CROSS, INCLUDING EATERIES, RESTUARANTS, BARS, AND SHOPS
- LOCAL SCHOOL CATCHMENTS INCLUDING OFSTED RATED 'OUTSTANDING' HUNTERS BAR SCHOOL ALSO GREYSTONES PRIMARY AND HIGH STORRS SECONDARY
- LOCATED IN THE HEART OF THE WELL SOUGHT AFTER SUBURB OF ECCLESALL
- IDEAL FOR GROWING FAMILIES AND YOUNG PROFFESIONALS ALIKE







Total area: approx. 141.7 sq. metres (1525.3 sq. feet)

All measurements are approximate
Plan produced using PlanUp.