



WHITEHORSES

Buy. Sell. Let. Relax!

0114 268 8533
info@whitehorses.com
www.whitehorses.com

28 Lydgate Lane, Crookes

Sheffield

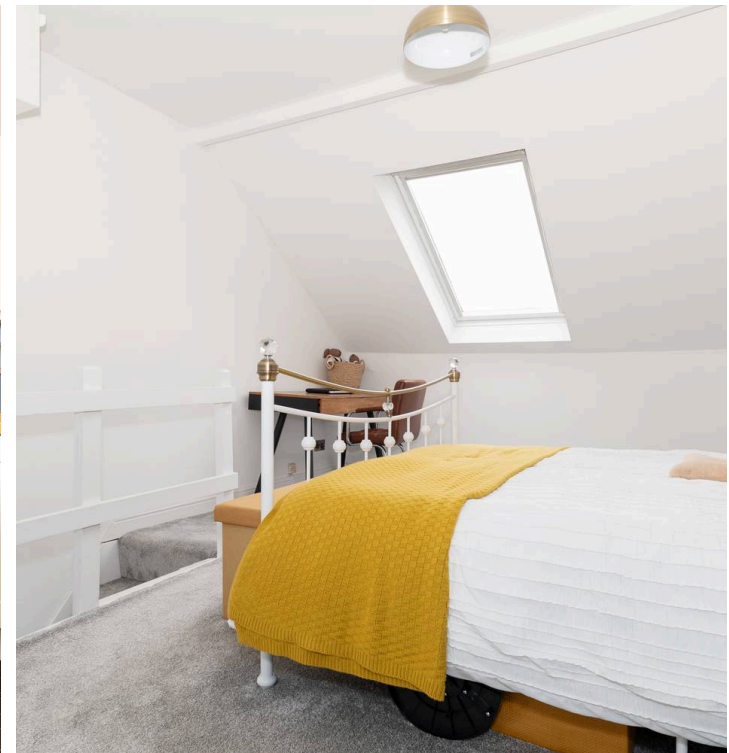
Guide Price £250,000 - £260,000

28 Lydgate Lane

Crookes, Sheffield

An absolutely gorgeous three bedroom, stone fronted, bay window, mid, Victorian terrace property. Finished internally to a high standard by the current vendors the property retains numerous original features, character and charm associated with a property from this era and effortlessly combines them with fresh modern finish. With a fabulous marble fireplace to front sitting room, fitted rear dining kitchen and larger than anticipated rear, flat sunny garden it's easy to say this property will be super popular with the professional couple, first time buyer or young family alike and that viewing is essential to do full justice to this lovely property. Located in the very heart of ultra popular and fashionable Crookes the property is a short stroll to numerous independent cafes, eateries and shops within the high street, principal hospitals and universities are also within walking distance. Council Tax band: B Tenure: Leasehold

- STUNNING THREE BEDROOM BAY WINDOWED VICTORIAN MID TERRACE
- STONE FRONTED PERIOD PROPERTY FINISHED INTERNALLY TO A SUPER HIGH SPEC
- THREE LIGHT AND SPACIOUS FLOORS OF ACCOMMODATION TOTTALLING AN IMPRESSIVE 1,031 SQ FEET
- PERFECT FOR THE PROFESSIONAL COUPLE FIRST TIME BUYER OR YOUNG FAMILY MARKET ALIKE
- EXCELLENT SCHOOLING CATCHMENTS INCLUDING LYDGATE JUNIOR AND TAPTON SECONDARY
- ON ROAD PARKING TO THE FRONT





Outbuilding

Approx. 1.4 sq. metres (15.4 sq. feet)



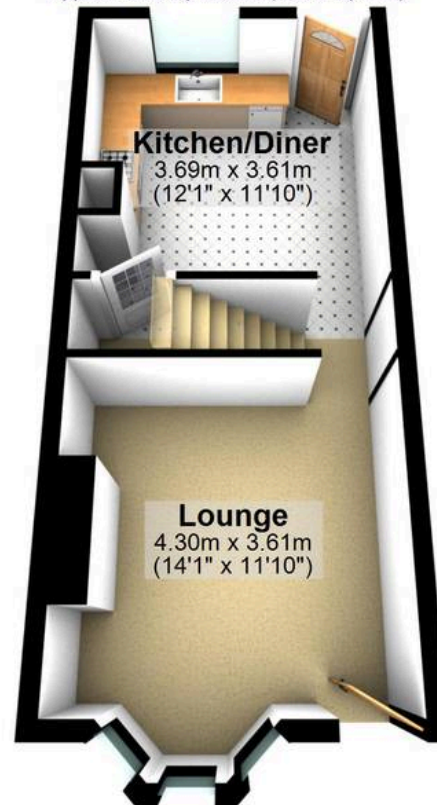
WHITEHORNES

Buy. Sell. Let. Relax!

0114 268 8533
info@whitehornes.com
www.whitehornes.com

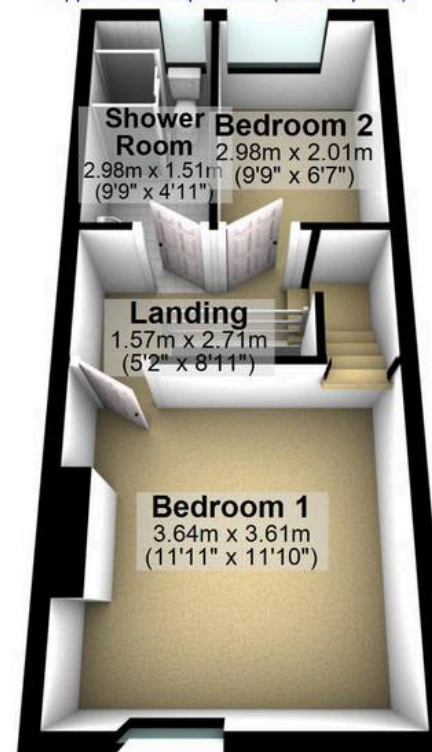
Ground Floor

Approx. 30.5 sq. metres (328.2 sq. feet)



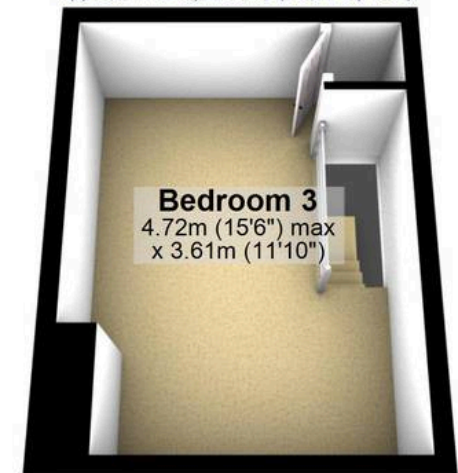
First Floor

Approx. 30.3 sq. metres (326.1 sq. feet)



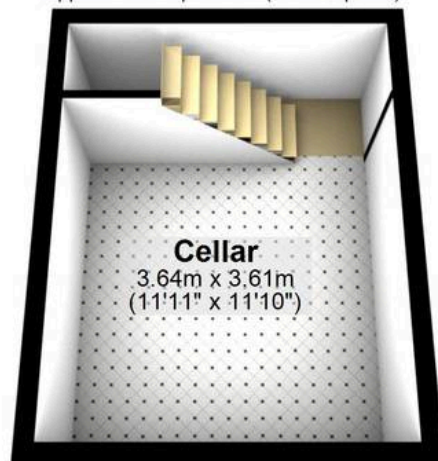
Second Floor

Approx. 17.0 sq. metres (183.4 sq. feet)



Cellar

Approx. 16.6 sq. metres (178.7 sq. feet)



Total area: approx. 95.9 sq. metres (1031.8 sq. feet)

All measurements are approximate
Plan produced using PlanUp.