



**WHITEHORNS**  
Buy. Sell. Let. Relax!  
0114 268 8533  
info@whitehorns.com  
www.whitehorns.com

229 Highcliffe Road, High Storrs

Sheffield

Guide Price £550,000 - £575,000



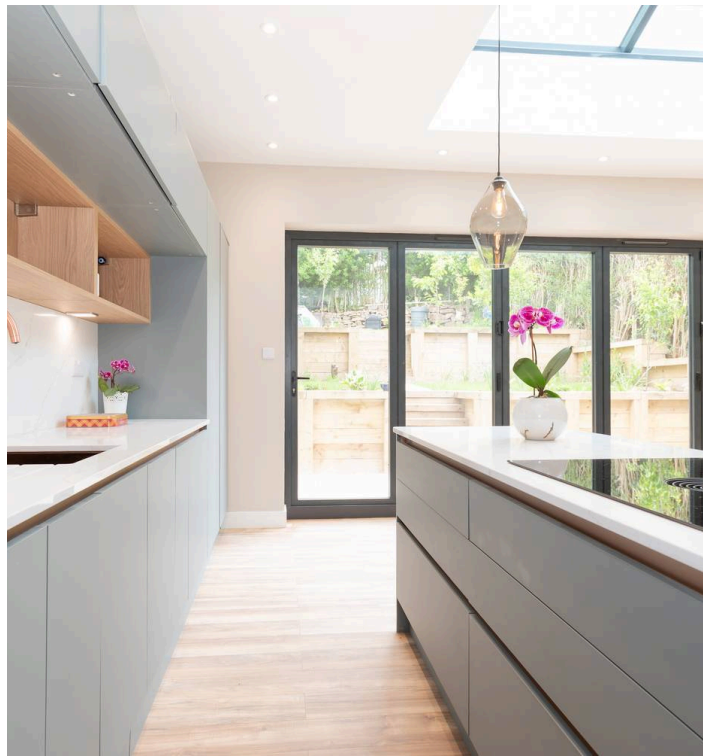
# 229 Highcliffe Road

High Storrs, Sheffield

Redefining the term contemporary modern living is this outstanding four double bedroom, two bathroom, bay window, semi detached family home. Having been expertly extended to the rear and loft and finished throughout with a flare for design that has delivered a finished home with absolutely no expense spared. Having been incredibly sympathetic to properties age the vendor has recreated the original window style finished by bespoke joiners allowing a stunning aesthetic alongside efficiency and gives the property a perfect balance of period quality and contemporary design that delivers on every level. With three incredible floors of accommodation that total an impressive 1,552 sq feet in particular particular stand out features include the stunning rear open plan, living, dining kitchen with bi-fold doors flooding the space with natural light.

Council Tax band: C Tenure: Leasehold

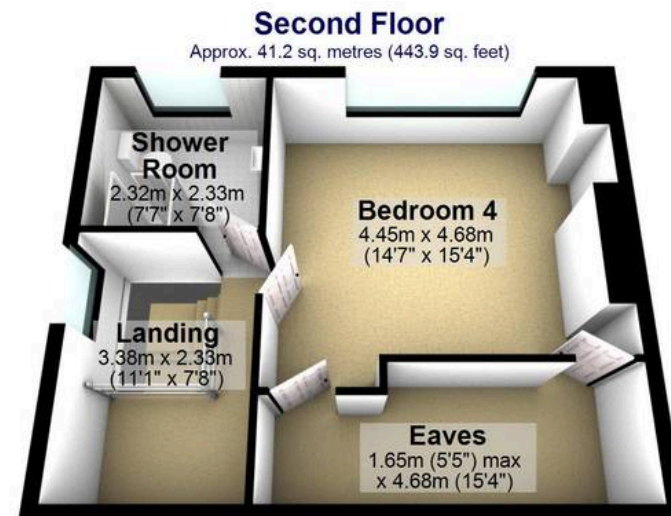
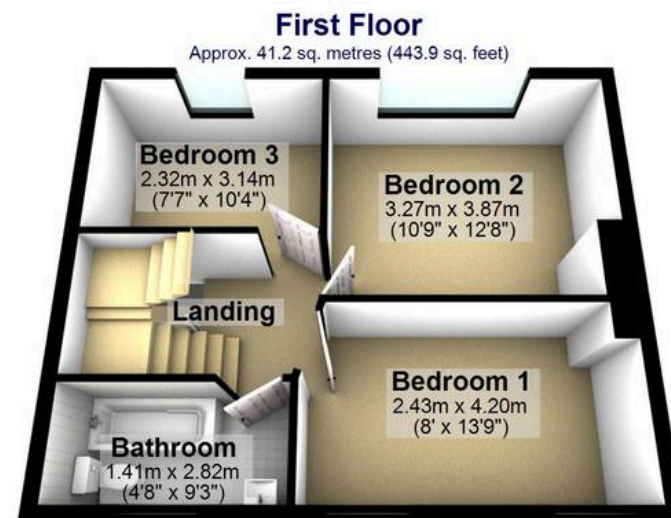
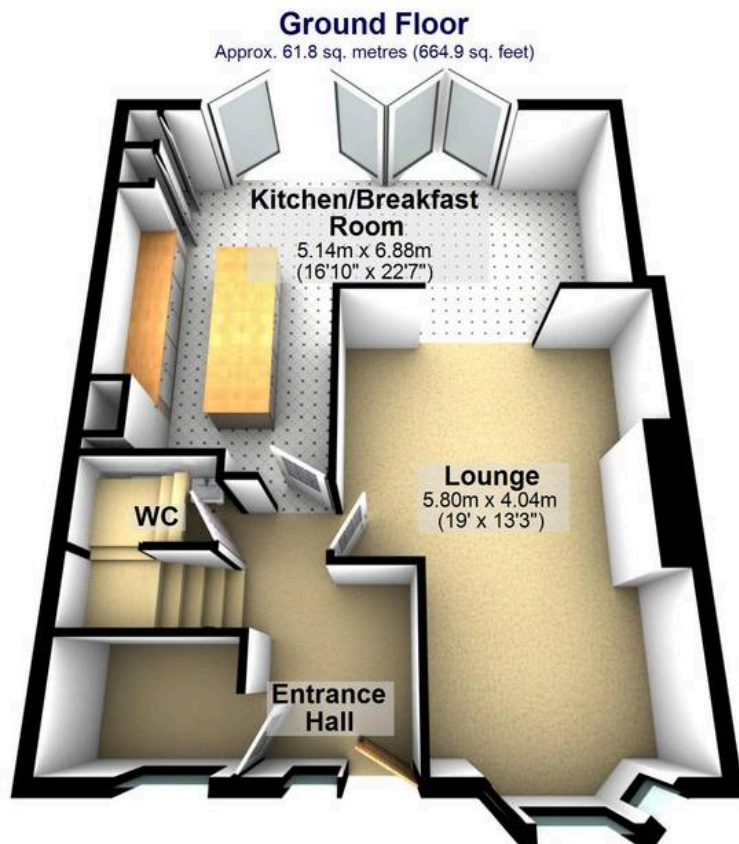
- ABSOLUTELY STUNNING FOUR DOUBLE BEDROOM TWO BATHROOM SEMI DETACHED HOME
- RECENTLY RENOVATED TO THE ABSOLUTE HIGHEST STANDARD WITH NO EXPENSE SPARED
- EXTENDED TO THE REAR AND LOFT TO CREATE THREE FLOORS OF ACCOMMODATION TOTALLING AN IMPRESSIVE 1,552 SQ FEET
- REDEFINING THE TERM CONTEMPORARY OPEN PLAN MODERN FAMILY LIVING WITH VIEWING A PREREQUISITE TO DO FULL JUSTICE
- EXCELLENT SCHOOLING CATCHMENTS INCLUDING ECCLESALL JUNIOR AND HIGH STORRS SECONDARY











Total area: approx. 144.3 sq. metres (1552.8 sq. feet)

All measurements are approximate  
Plan produced using PlanUp.