



WHITEHORNES

Buy. Sell. Let. Relax!

0114 268 8533
info@whitehorses.com
www.whitehorses.com



13 Hollythorpe Road, Norton Lees

Sheffield

Guide Price £285,000 - £295,000

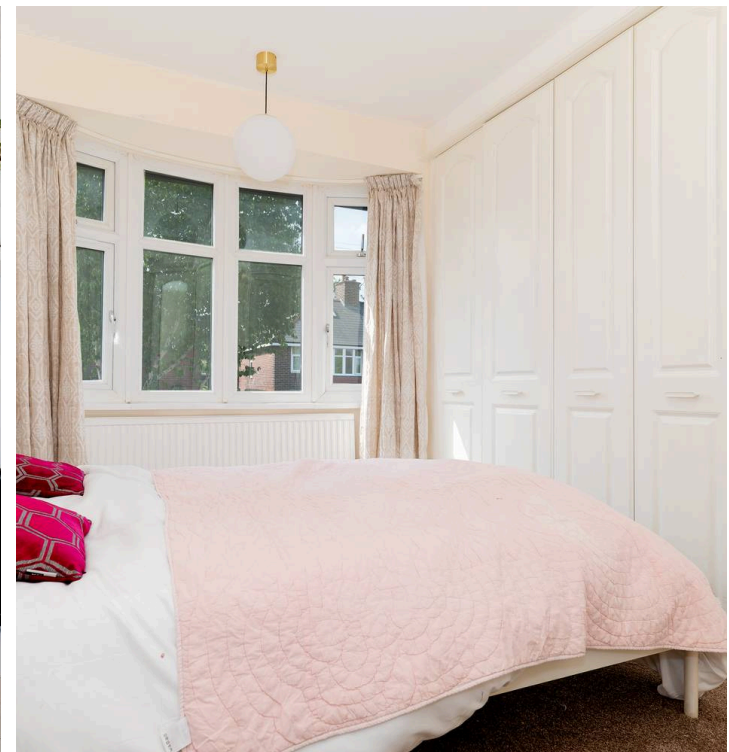
13 Hollythorpe Road

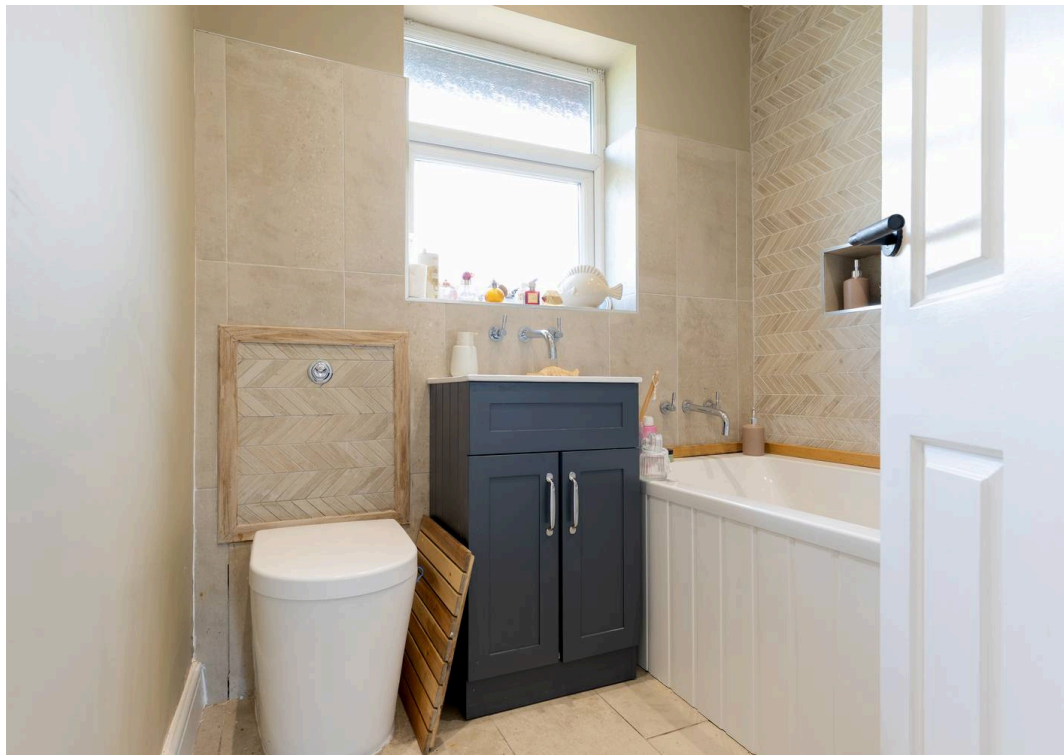
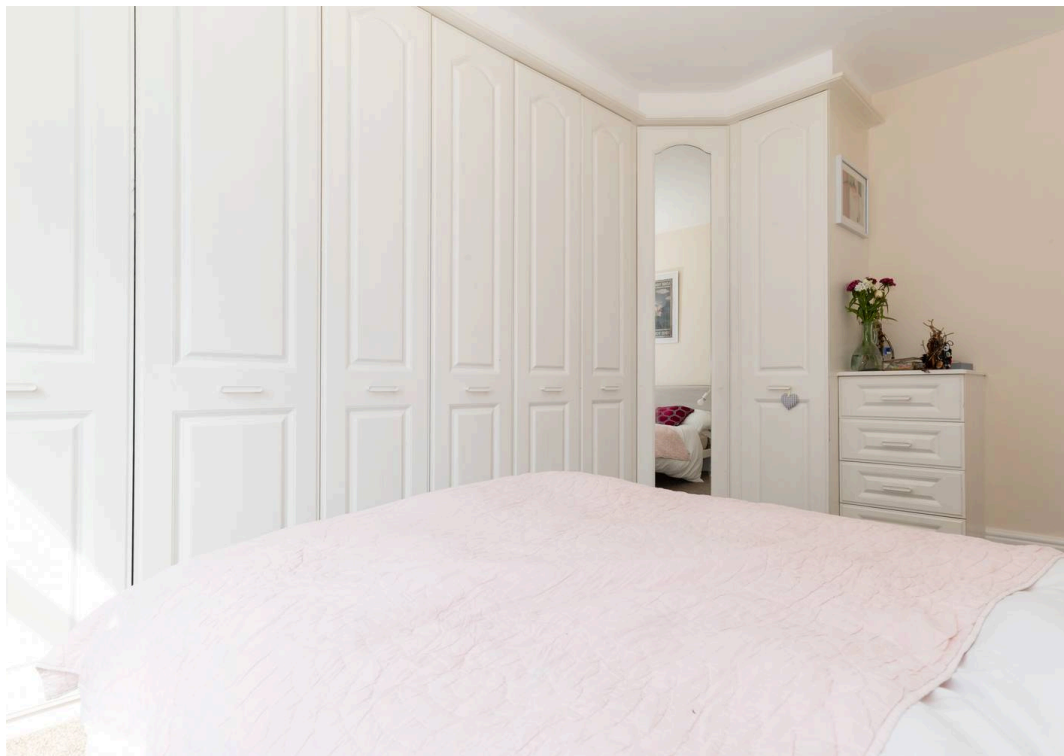
Norton Lees, Sheffield

This fabulous three-bedroom extended bay-windowed semi-detached home offers a perfect blend of contemporary living and homely charm. The rear open-plan extended kitchen diner boasts modern fittings and bi-fold doors leading to the garden, providing an ideal space for entertaining guests. From the rear, one can enjoy breathtaking views over the city skyline, best enjoyed though from the rear upper floor bedroom. Situated on a quiet residential road in the heart of popular Norton Lees, this property is a must-see for families looking for their dream home. Its proximity to top-rated schools such as Mundella Primary and Meadowhead Secondary make it an ideal choice for those with children. With off-road parking for two vehicles at the front and a private sunny garden at the rear, this home offers convenience and space in equal measure.

Council Tax band: B Tenure: Leasehold

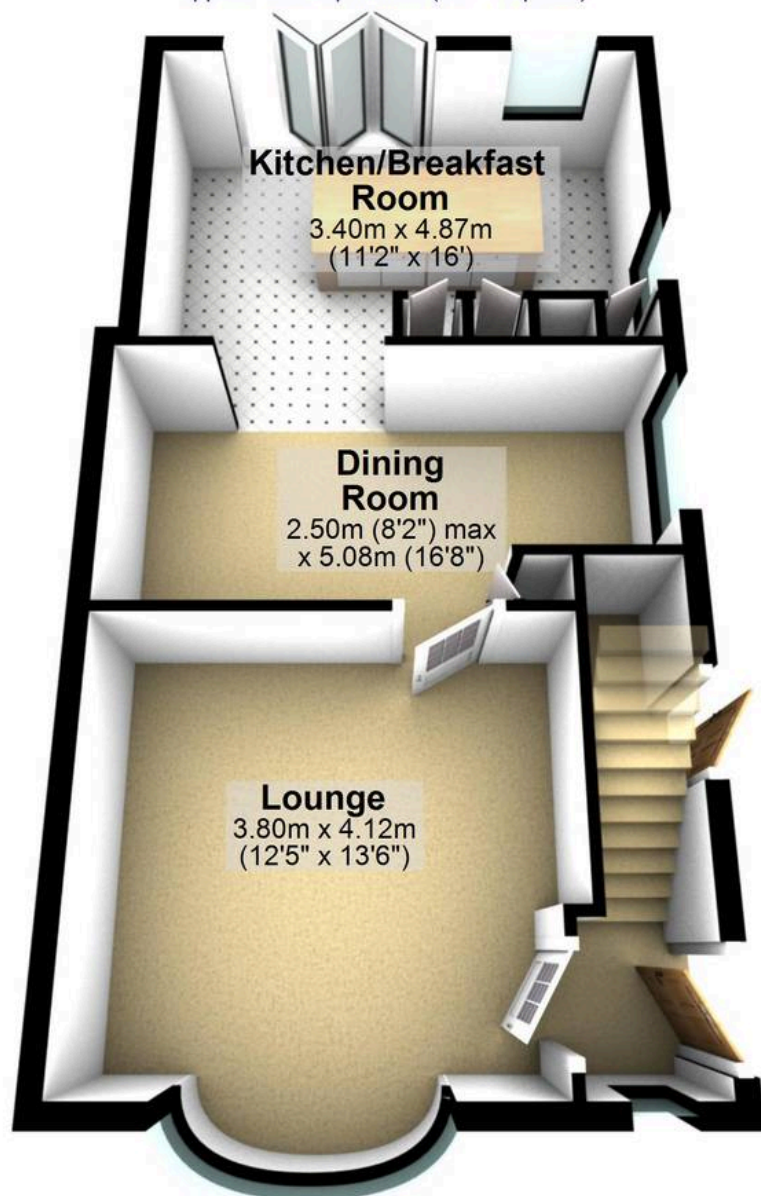
- FABULOUS THREE BEDROOM EXTENDED BAY WINDOWED SEMI-DETACHED HOME
- REAR OPEN PLAN CONTEMPORARY FITTED KITCHEN DINER WITH BI-FOLD DOORS TO THE GARDEN
- FAR REACHING VIEWS TO THE REAR OVER THE CITY SKYLINE
- QUIET RESIDENTIAL ROAD IN THE VERY HEART OF POPULAR NORTON LEES
- PERFECT FOR THE GROWING FAMILY MARKET WITH VIEWING ESSENTIAL
- EXCELLENT SCHOOLING CATCHMENTS INCLUDING MUNDELLA PRIMARY AND MEADOWHEAD





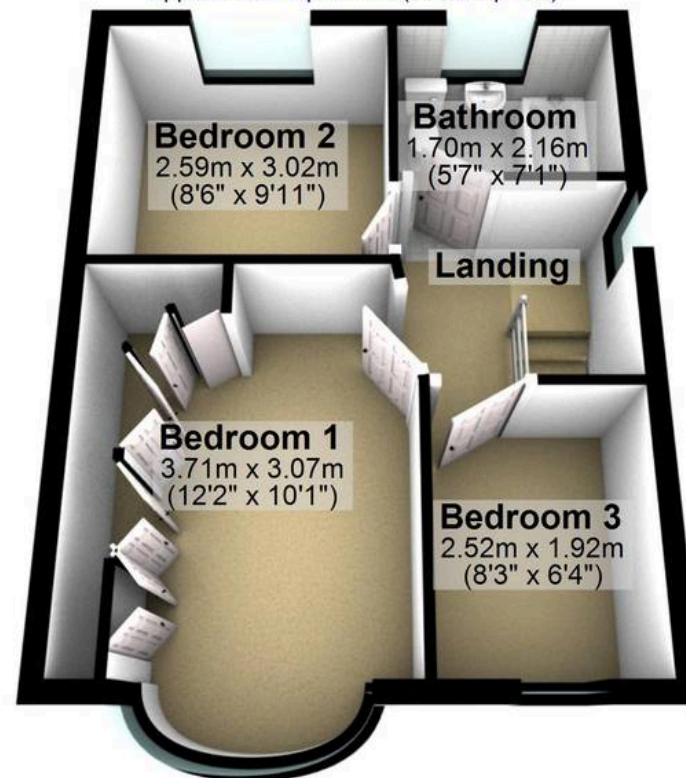
Ground Floor

Approx. 49.9 sq. metres (537.4 sq. feet)



First Floor

Approx. 32.8 sq. metres (353.3 sq. feet)



Total area: approx. 82.7 sq. metres (890.6 sq. feet)

All measurements are approximate
Plan produced using PlanUp.


WHITEHORNES
Buy. Sell. Let. Relax!

0114 268 8533
info@whitehornes.com
www.whitehornes.com