


WHITEHORNES
FOR SALE
0114 268 8533 WHITEHORNES.COM

FLAT'S
GROUND FLOOR

21 Thornsett Road, Brincliffe

Sheffield

Guide Price £160,000 - £170,000

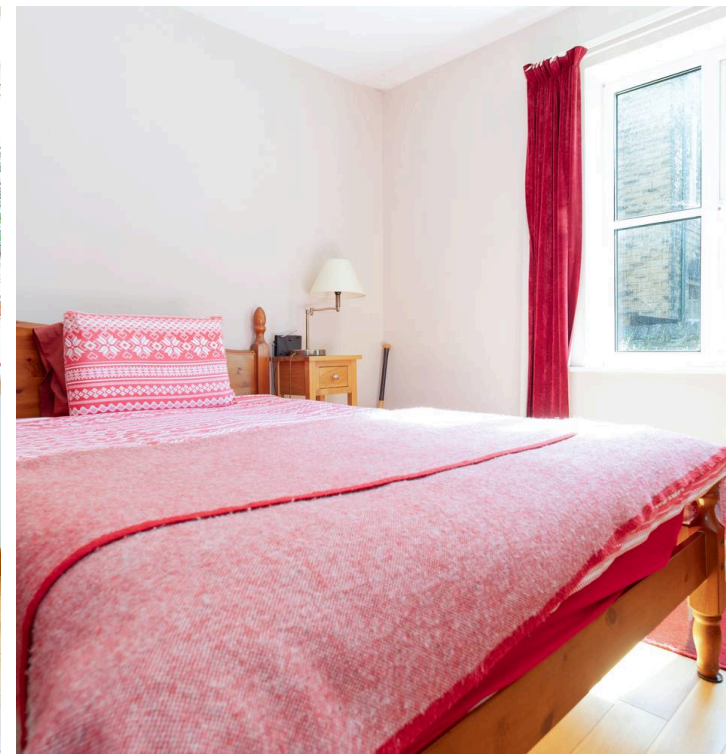
21 Thornsett Road

21 Thornsett Road, Sheffield

Quietly tucked away on this well sought after residential road in the very heart of the sought-after Brincliffe area in the southwest of the city, this excellent two-bedroom ground floor garden apartment presents a rare opportunity to market. Boasting a private entrance and situated in a small development of only four apartments that is now available to market with the added benefit of no upward chain. Ideal for a professional couple looking for their first home or those looking to downsize, this apartment offers light and spacious accommodation with easy access to communal gardens directly from the sitting room. With its close proximity to both fashionable Sharrow Vale and Nether Edge, that offer up an array of independent cafes, eateries and shops. Not to mention its close proximity to leading hospitals and universities, Chelsea park is close by and not forgetting The Peak District is up the road.

Council Tax band: B Tenure: Leasehold

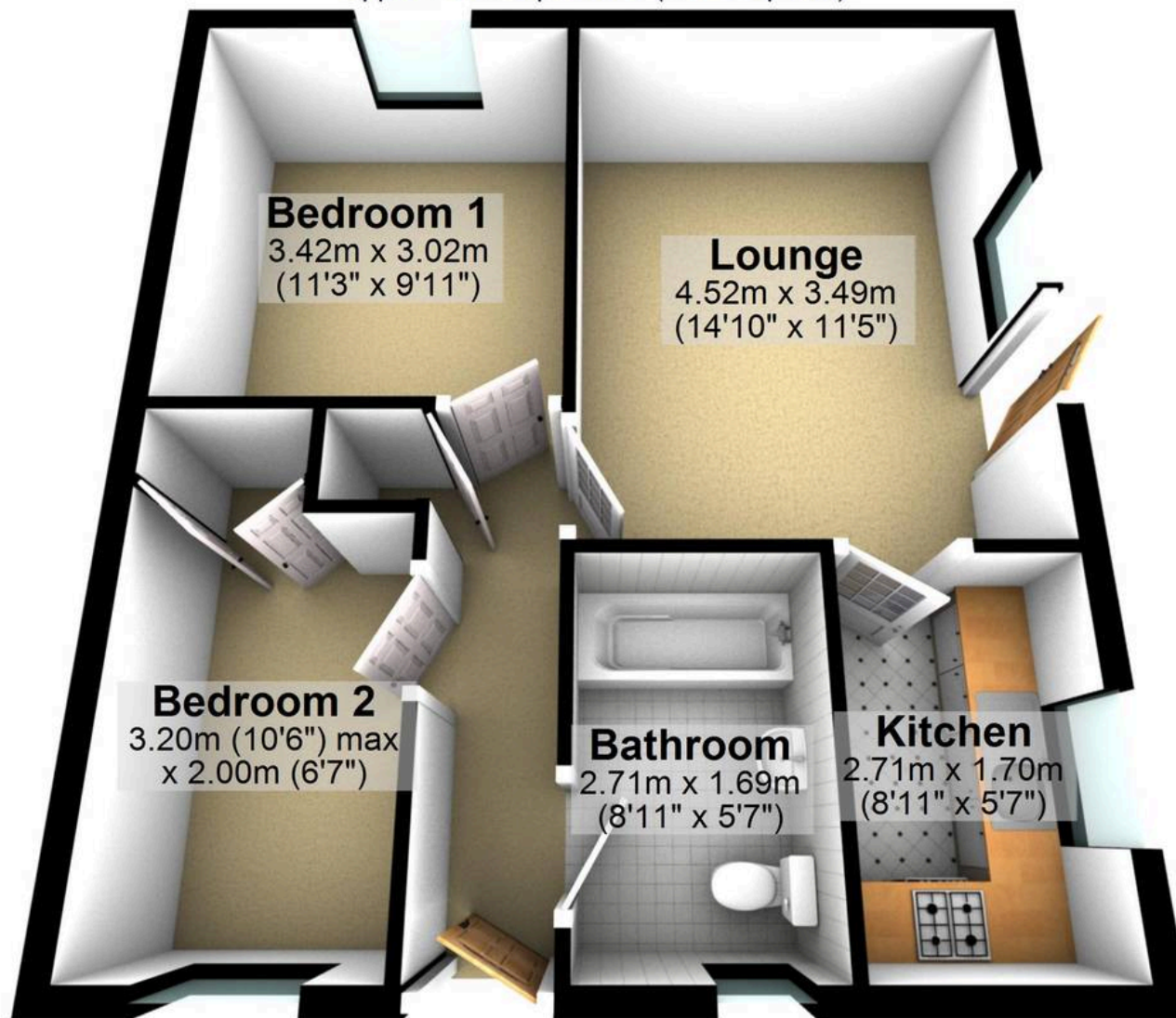
- EXCELLENT TWO DOUBLE BEDROOM GROUND FLOOR GARDEN APARTMENT
- AVAILABLE TO MARKET WITH THE BENEFIT OF NO UPWARD CHAIN INVOLVED
- PERFECT FOR THE PROFESSIONAL COUPLE FIRST BUY OR THOSE LOOKING TO DOWNSIZE
- HEART OF ULTRA POPULAR BRINCLIFFE ON THE SOUTH WEST OF THE CITY
- PRIVATE ENTRANCE AND ONE OF ONLY FOUR APARTMENTS IN THIS SMALL DEVELOPMENT
- CLOSE TO NUMEROUS LOCAL AMENITIES





Ground Floor

Approx. 48.4 sq. metres (521.2 sq. feet)



Total area: approx. 48.4 sq. metres (521.2 sq. feet)

All measurements are approximate
Plan produced using PlanUp.