



**WHITEHORSES**

Buy. Sell. Let. Relax!

0114 268 8533  
info@whitehorses.com  
www.whitehorses.com

6 Brandreth Road, Lower Walkley

Sheffield

Guide Price £165,000 - £175,000

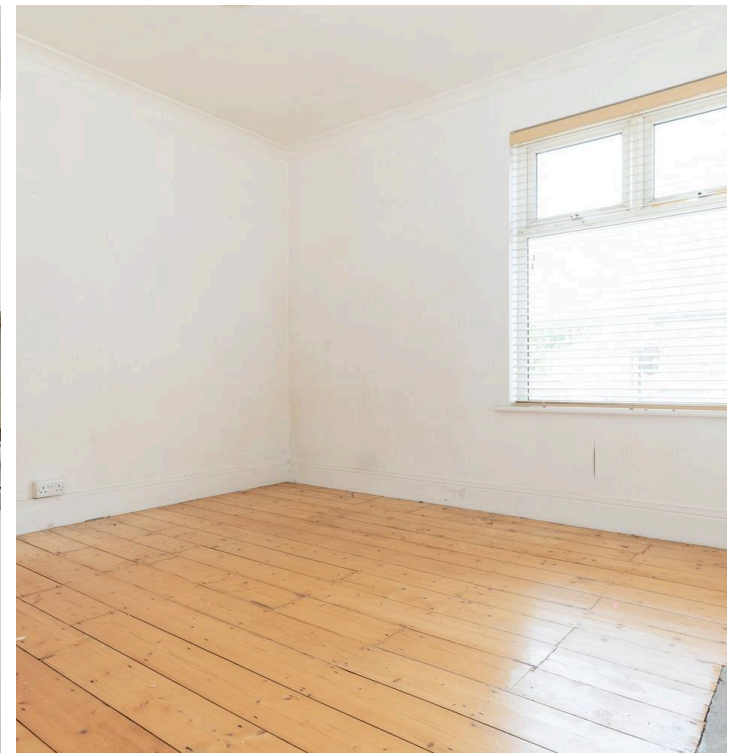
# 6 Brandreth Road

Lower Walkley, Sheffield

Situated in the heart of the popular S6 suburb with close proximity to a range of amenities, this three bedroom, bay windowed, stone fronted, Victorian, end of terrace house offers a fantastic opportunity for those seeking a property with potential for renovation and updating throughout. Boasting three floors of spacious accommodation, totalling an impressive 1,143 square feet, this property presents an exciting canvas for future value addition, allowing the new owner to create a personalised finished home to their own taste and style. Upon entering the property, you are greeted by a well-proportioned living space that flows seamlessly into a dining area through to the kitchen and small rear extension. There is easy on-road parking to the front and rear yard garden. The location provides easy access to a variety of shops and restaurants, also benefiting from excellent public transport links.

Council Tax band: A Tenure: Leasehold

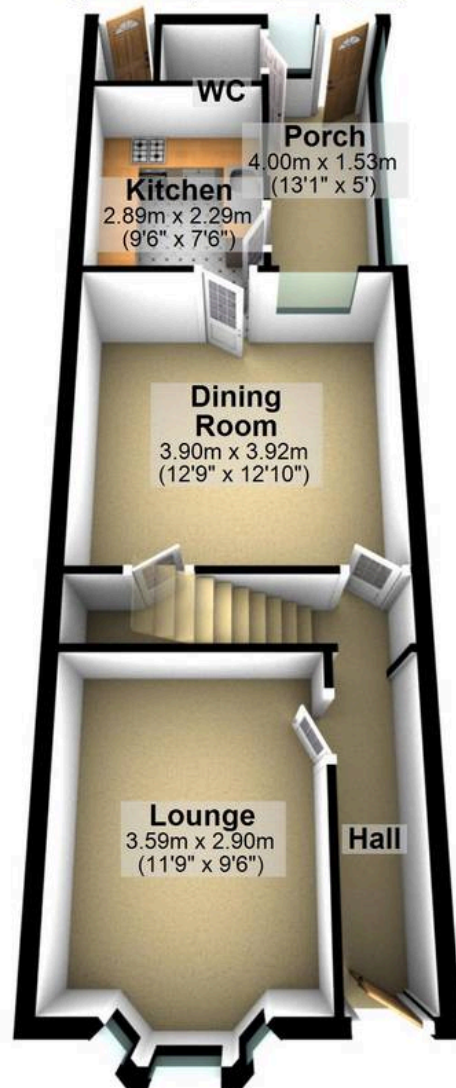
- THREE BEDROOM BAY WINDOWED STONE FRONTED VICTORIAN TERRACED
- IN NEED OF A SCHEME OF RENOVATION AND UPDATING THROUGHOUT
- POTENTIAL TO EASILY ADD FUTURE VALUE AND CREATE A PERSONALISED FINISHED HOME TO THE NEW BUYERS TASTE AND STYLE
- QUIET RESIDENTIAL CLOSE TO AMENITIES AND WALKING DISTANCE TO CENTRAL SHEFFIELD
- THREE FLOORS OF SPACIOUS ACCOMMODATION TOTALLING AN IMPRESSIVE 1,143 SQ FEET
- DOUBLE REAR OFF SHOT





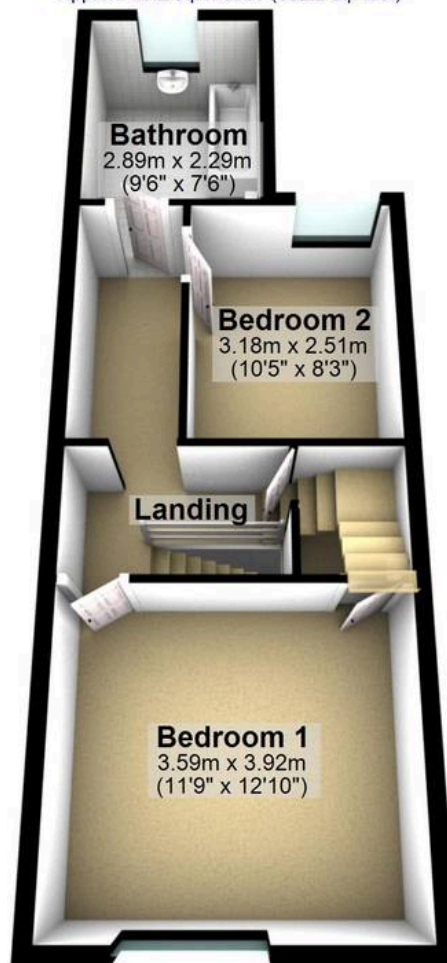
## Ground Floor

Approx. 49.6 sq. metres (533.6 sq. feet)



## First Floor

Approx. 40.2 sq. metres (432.2 sq. feet)



## Second Floor

Approx. 16.5 sq. metres (177.4 sq. feet)



Total area: approx. 106.2 sq. metres (1143.1 sq. feet)

All measurements are approximate  
Plan produced using PlanUp.