



WHITEHORSES

Buy. Sell. Let. Relax!

0114 268 8533
info@whitehorses.com
www.whitehorses.com

328 Millhouses Lane, Millhouses

Sheffield

Offers Over **£1,200,000**

328 Millhouses Lane

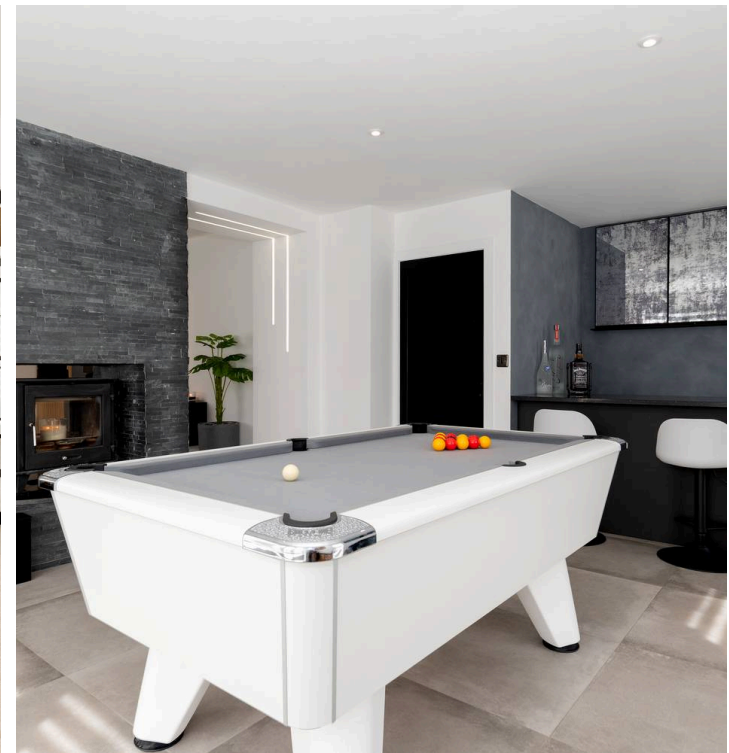
Millhouses, Sheffield

A once in a lifetime opportunity has arisen to purchase this truly stunning, five bedrooms, four bathrooms detached family home. With a bright, light and modern feel throughout, this property boasts an impressive 3,032 Sq Ft across two floors of accommodation. In brief this property consists of a basement/workshop, large, airy entrance hall, open plan kitchen/dining room with a superb kitchen island and integrated appliances, convenient utility room, spacious family living room which flows into the unique games room, 2 downstairs w/c, and downstairs shower room. To the upstairs is five double bedrooms, two of which benefit from a beautiful, marble tiled jack-and-jill ensuite, ample dressing room and family bathroom. Through the bi-fold doors is a patio space and family-friendly enclosed garden. In the outbuilding is a brilliant sauna and gym space. Situated in the heart of Millhouses with numerous local amenities a short stroll away and superb school catchments including Dobcroft infant and junior school, and Mercia Secondary School. It's easy to say that viewing is essential to fully appreciate this fantastic property.

Council Tax band: F

Tenure: Leasehold

- SUPERB FIVE BEDROOM FOUR BATHROOM DETACHED FAMILY HOME
- SITUATED IN THE HEART OF WELL SOUGHT AFTER MILLHOUSES
- ONCE IN A LIFETIME OPPURTUNITY TO PURCHASE
- LOCATED IN THE HEART OF WELL SOUGHT AFTER MILLHOUSES
- CLOSE BY TO NUMEROUS LOCAL AMENITIES
- SUPERB SCHOOLING CATCHMENTS NEARBY





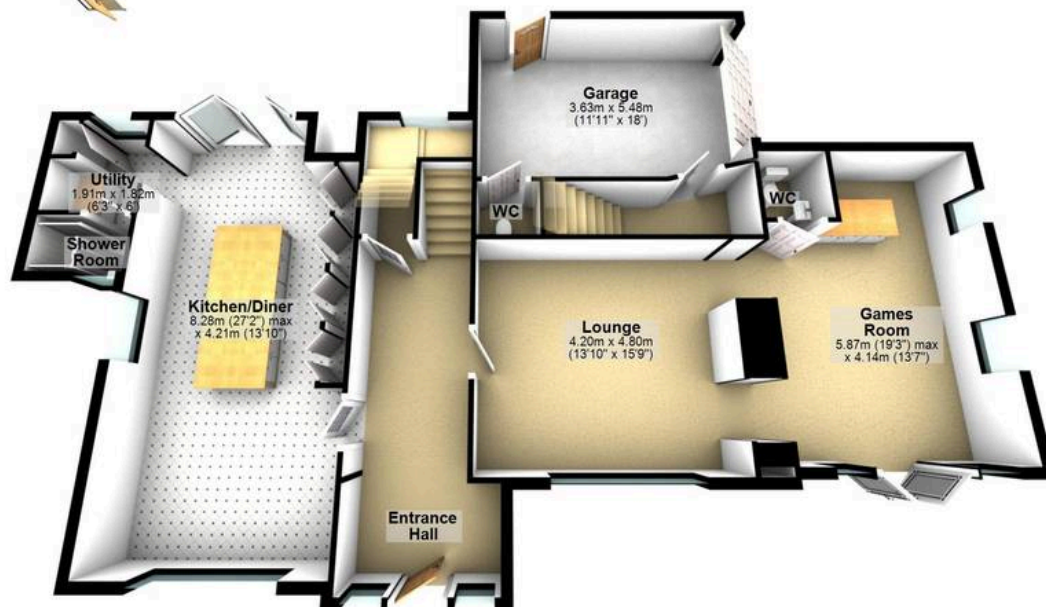
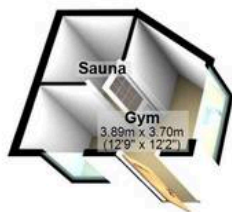
Basement

Approx. 22.3 sq. metres (240.1 sq. feet)



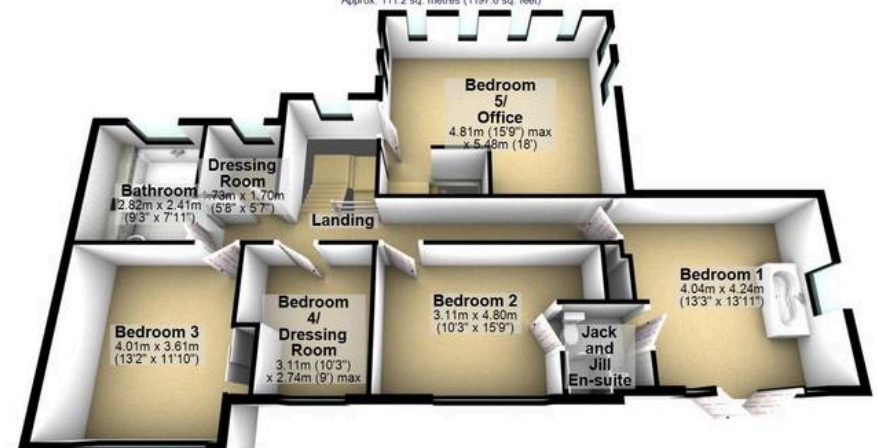
Ground Floor

Approx. 148.2 sq. metres (1595.7 sq. feet)



First Floor

Approx. 111.2 sq. metres (1197.0 sq. feet)



Total area: approx. 281.7 sq. metres (3032.7 sq. feet)

All measurements are approximate.
Plan produced using PlanUp.