

580 Stannington Road, Stannington

Sheffield

Guide Price £275,000 - £285,000

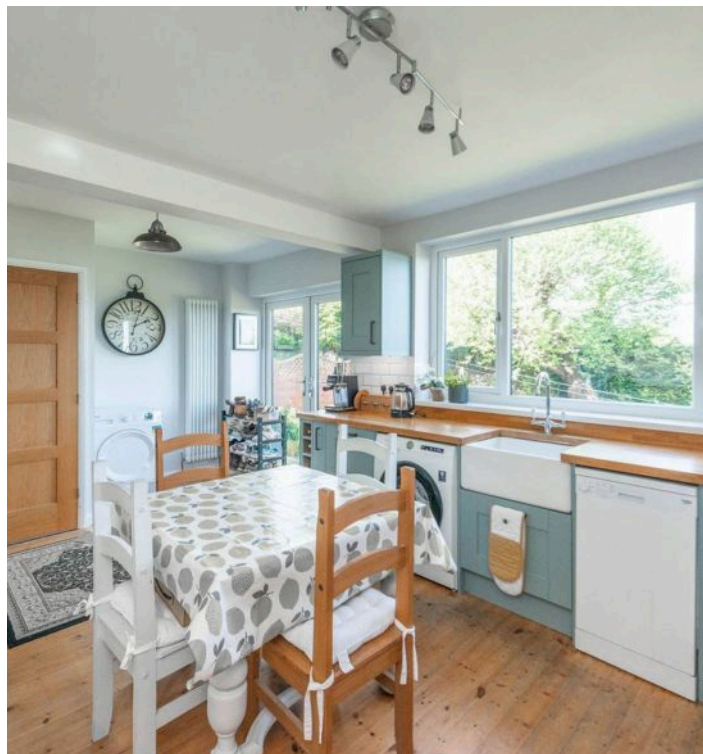
580 Stannington Road

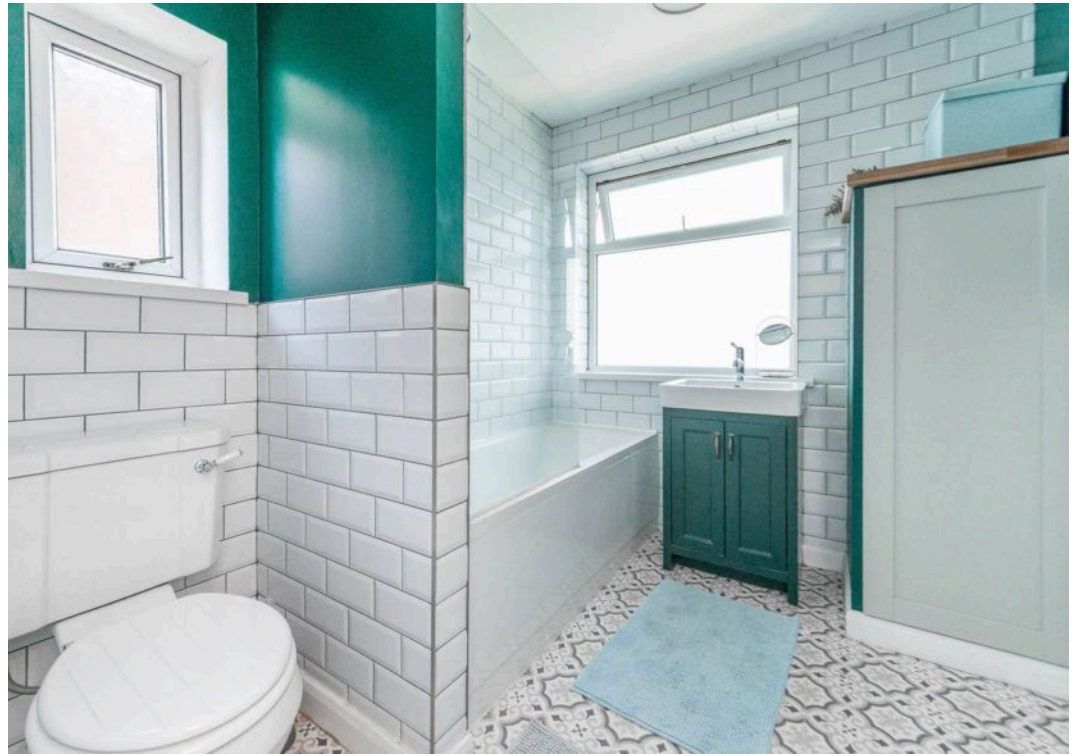
Stannington, Sheffield

Nestled in the heart of the sought-after area of Stannington, this fabulous three-bedroom bay-windowed semi-detached home presents an exceptional opportunity for those seeking a comfortable and stylish residence. Boasting incredible views, best enjoyed from the first floor, this property has undergone numerous updates by the current vendors, including a newly fitted kitchen and bathroom. The spacious accommodation spans two light-filled floors, totalling 1,035 sq feet. With vast potential to extend to the side, rear and loft, subject to planning, the property further benefits from off-road parking, a garage, and a private sunny garden, making it ideal for families. Falling in catchment for excellent local schools and being close to numerous amenities and the open countryside it's easy to say this property will appeal to the growing family market and viewing is essential to appreciate the style

Council Tax band: C Tenure: Leasehold

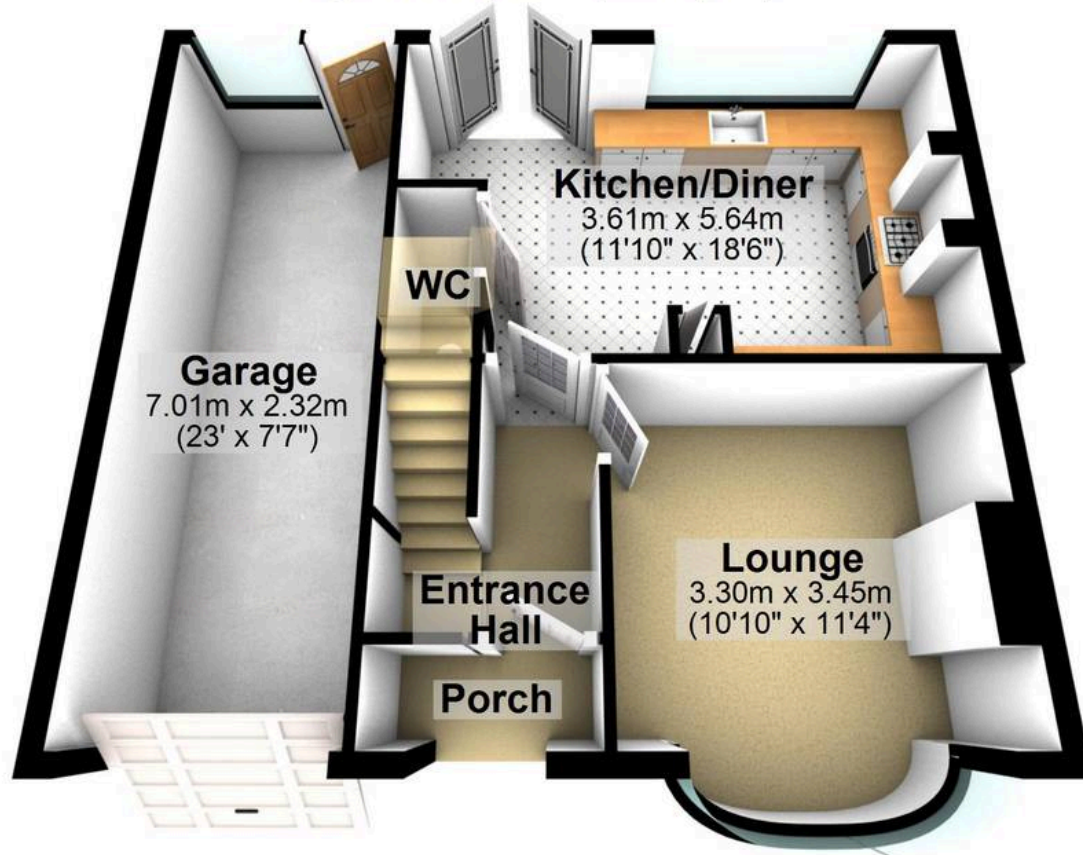
- FABULOUS THREE BEDROOM BAY WINDOWED SEMI-DETACHED HOME
- INCREDIBLE VIEWS TO THE REAR BEST ENJOYED FROM THE FIRST FLOOR
- NEWLY FITTED KITCHEN AND BATHROOM AMONGST NUMEROUS OTHER CHANGES MADE BY THE CURRENT VENDORS
- VAST POTENTIAL TO EXTEND SUBJECT TO PLANNING TO THE SIDE LOFT AND REAR
- OFF ROAD PARKING GARAGE AND PRIVATE SUNNY GARDEN
- HEART OF POPULAR STANNINGTON CLOSE TO AMENITIES AND THE OPEN COUNTRYSIDE
- PERFECT FOR THE GROWING FAMILY MARKET AND VIEWING ESSENTIAL





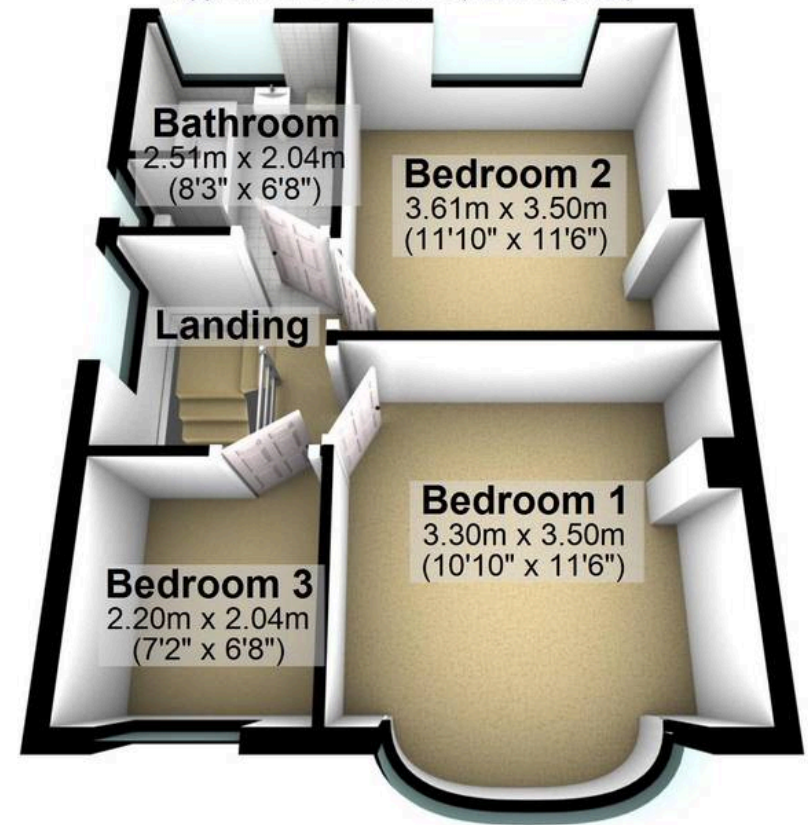
Ground Floor

Approx. 56.3 sq. metres (606.0 sq. feet)



First Floor

Approx. 39.9 sq. metres (429.9 sq. feet)



Total area: approx. 96.2 sq. metres (1035.9 sq. feet)

All measurements are approximate
Plan produced using PlanUp.


WHITEHORNES
Buy. Sell. Let. Relax!

0114 268 8533
info@whitehornes.com
www.whitehornes.com