



38 Stumperlowe Park Road, Fulwood

Sheffield

Guide Price £850,000 - £875,000



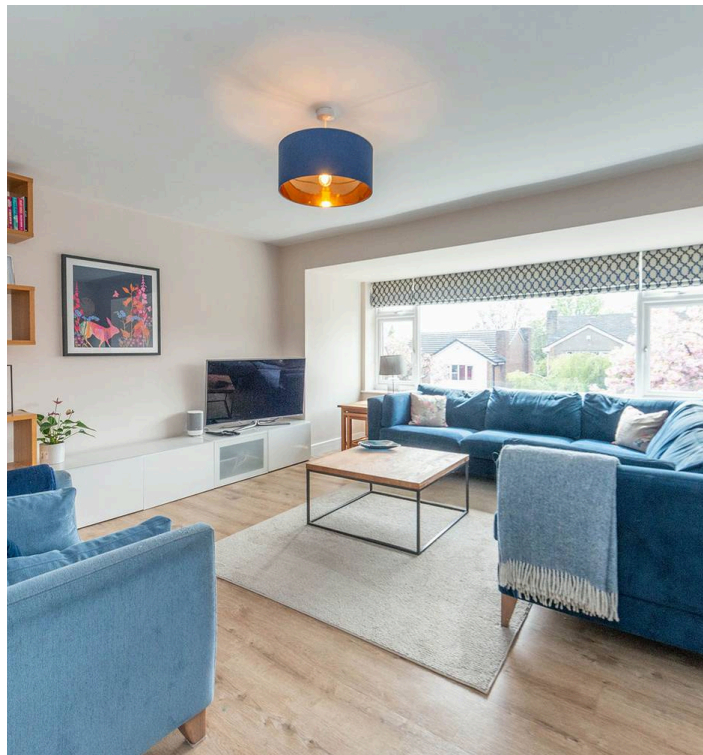
# 38 Stumperlowe Park Road

Fulwood, Sheffield

This sensational four double-bedroom detached family home offers the very epitome of contemporary open-plan family living. Boasting an iconic Sheffield residential address in the heart of Fulwood, this property has been finished internally to the very highest of standards with no expense spared by the current vendors. Spread across two impressive floors totalling 1,784 sq feet, this residence features a beautiful rear extension with bi-fold doors leading to the sunny landscaped garden, flooding the space with natural light. Within walking distance to the Hallamshire Hospital and universities, this home is nestled in excellent schooling catchments, including Nether Green Junior School and Tapton/High Storrs Secondary School. The cleverly designed designated office on the ground floor offers the perfect workspace. The ample parking, garage, and electric vehicle charging point.

Council Tax band: F Tenure: Leasehold

- SENSATIONAL FOUR DOUBLE BEDROOM DETACHED FAMILY HOME
- OFFERING THE VERY EPITOME OF CONTEMPORARY OPEN PLAN FAMILY LIVING TO THE GROUND FLOOR
- FINISHED INTERNALLY TO THE VERY HIGHEST OF STANDARDS WITH NO EXPENSE SPARED BY THE CURRENT VENDORS
- ICONIC SHEFFIELD RESIDENTIAL ADDRESS IN THE VERY HEART OF FULWOOD
- WALKING DISTANCE TO THE HALLAMSHIRE HOSPITAL AND UNIVERSITIES
- EXCELLENT SCHOOLING CATCHMENTS INCLUDING NETHER GREEN JUNIOR AND TAPTON/HIGH STORRS SECONDARY



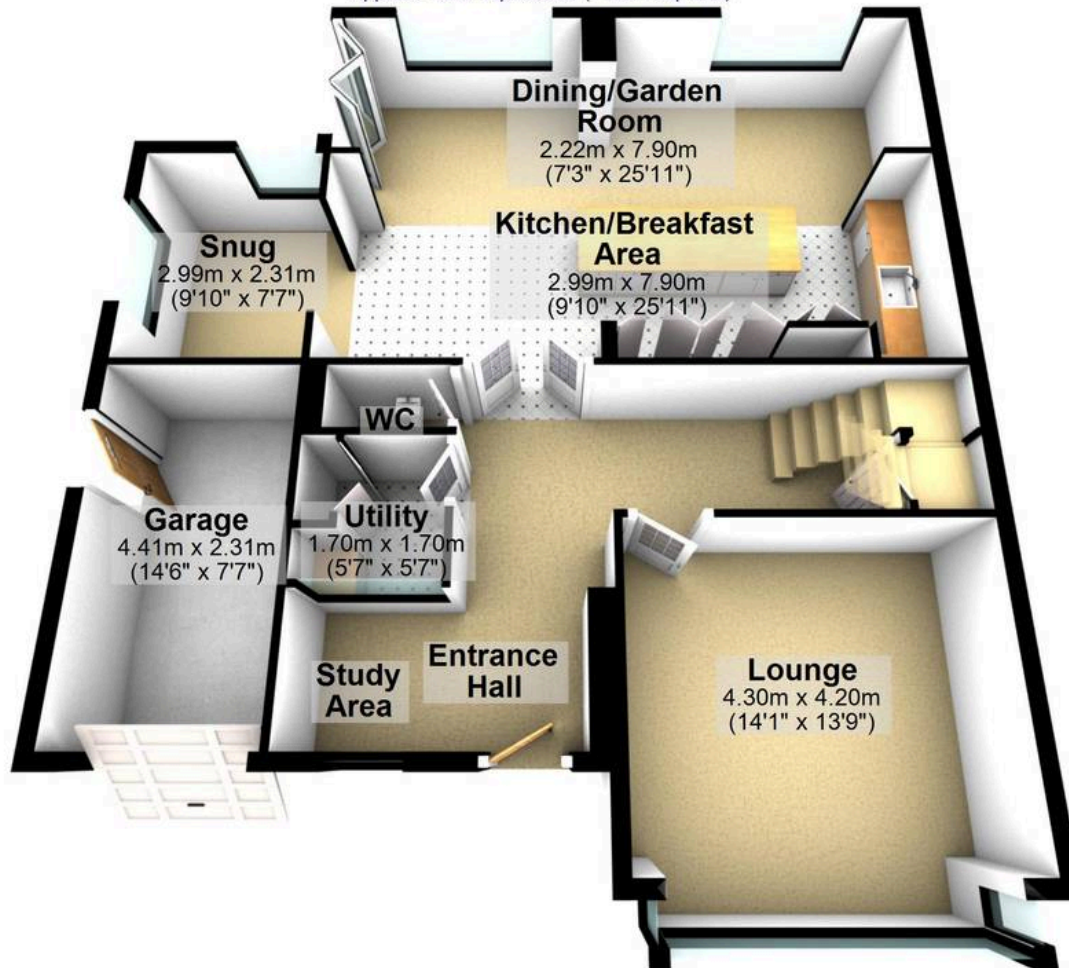






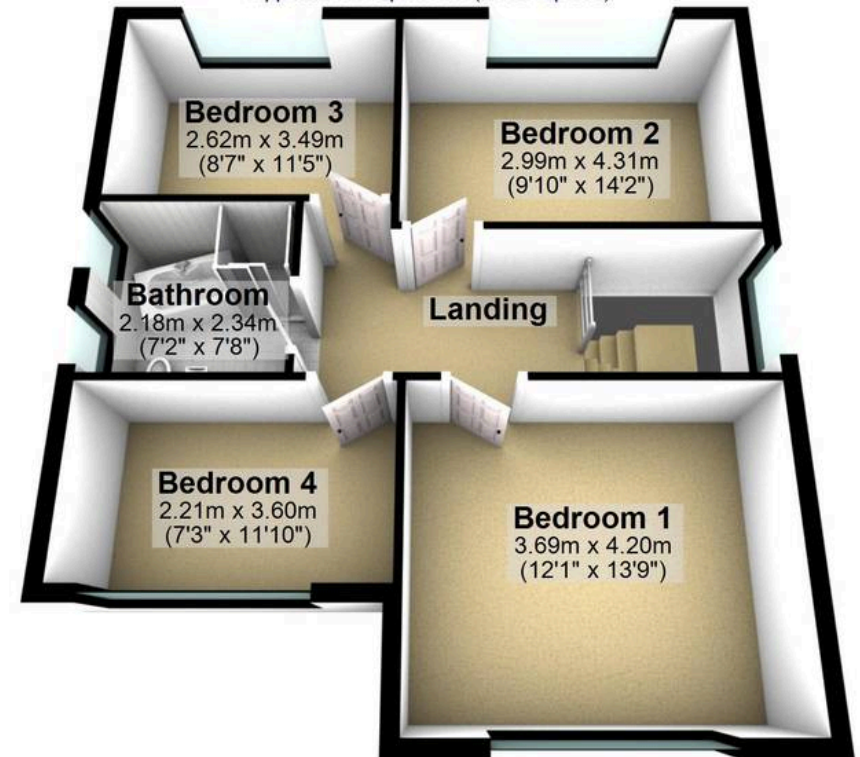
## Ground Floor

Approx. 102.7 sq. metres (1105.1 sq. feet)



## First Floor

Approx. 63.1 sq. metres (679.0 sq. feet)



Total area: approx. 165.7 sq. metres (1784.1 sq. feet)

All measurements are approximate  
Plan produced using PlanUp.