

68 Vincent Road, Nether Edge

Sheffield

Guide Price £240,000 - £250,000

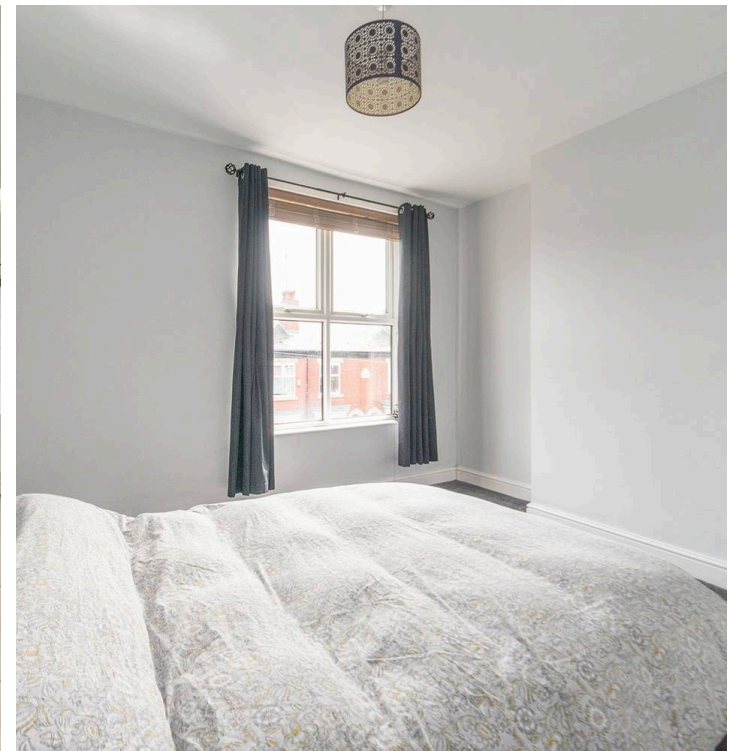
68 Vincent Road

Nether Edge, Sheffield

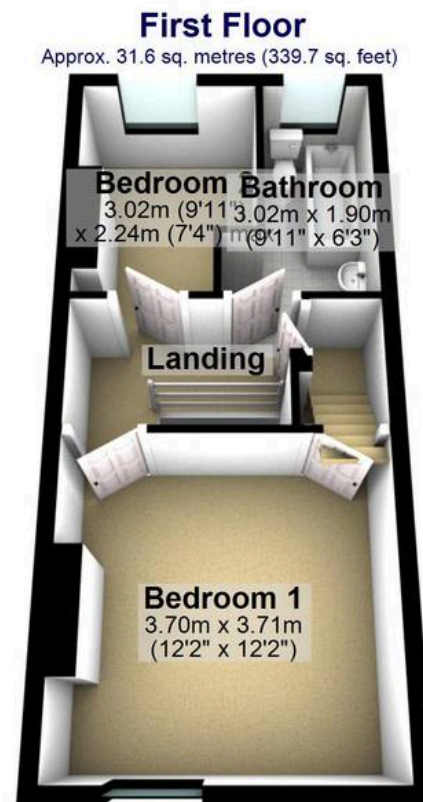
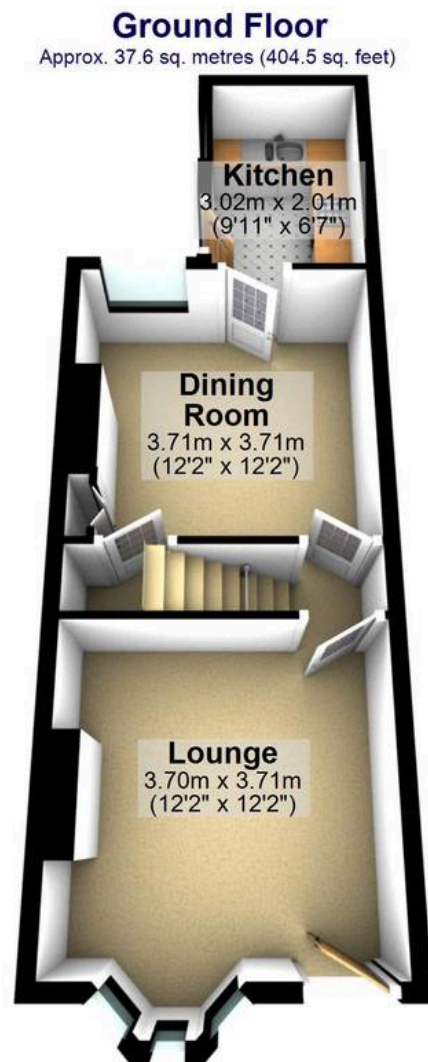
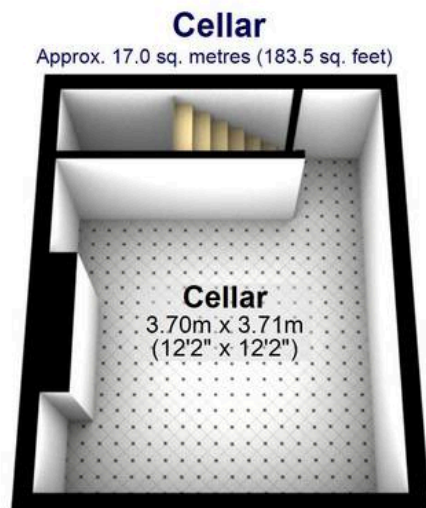
A beautifully finished and incredibly spacious, three bedroom, bay window, Victorian terraced home. Recently finished internally to a high standard by the current vendor including a newly fitted off shot kitchen, it's easy to say that viewing internally is absolutely essential to fully appreciate this sensational property. Retaining a wealth of the original period features, character and charm associated with a property from this era and effortlessly blending them with a cool, modern and fresh finish that will sure to be a big hit with the young professional couple, first time buyers and young family alike. Enjoying a private rear garden that benefits from no through fare from neighbouring properties, on road parking to the front and three spacious and light floors of accommodation that total an impressive 1,143 sq feet.

Council Tax band: A Tenure: Freehold

- STUNNING THREE BEDROOM BAY WINDOWED VICTORIAN TERRACED PROPERTY
- RECENTLY FINISHED TO A SUPER HIGH STANDARD BY THE CURRENT VENDOR
- NEWLY FITTED CONTEMPORARY OFF SHOT KITCHEN
- PRIVATE REAR GARDEN WITH NO THROUGH FARE FROM NEIGHBOURING PROPERTIES AND EASY ON ROAD PARKING TO THE FRONT
- AVAILABLE TO MARKET WITH NO UPWARD CHAIN AND VACANT POSSESSION ON COMPLETION
- HEART OF POPULAR NETHER EDGE ON THE SOUTH WEST OF THE CITY
- SHORT STROLL TO FASHIONABLE ABBEYDALE ROAD SHARROW VALE AND NETHER EDGE CENTRE
- PERFECT FOR THE FIRST TIME BUYER PROFESSIONAL COUPLE AND YOUNG FAMILY ALIKE







Total area: approx. 106.2 sq. metres (1143.2 sq. feet)

All measurements are approximate
Plan produced using PlanUp.