



WHITEHORNS
Buy. Sell. Let. Relax!
0114 268 8533
info@whitehorns.com
www.whitehorns.com

18 Edgedale Road, Nether Edge
Sheffield

Guide Price £330,000 – £350,000

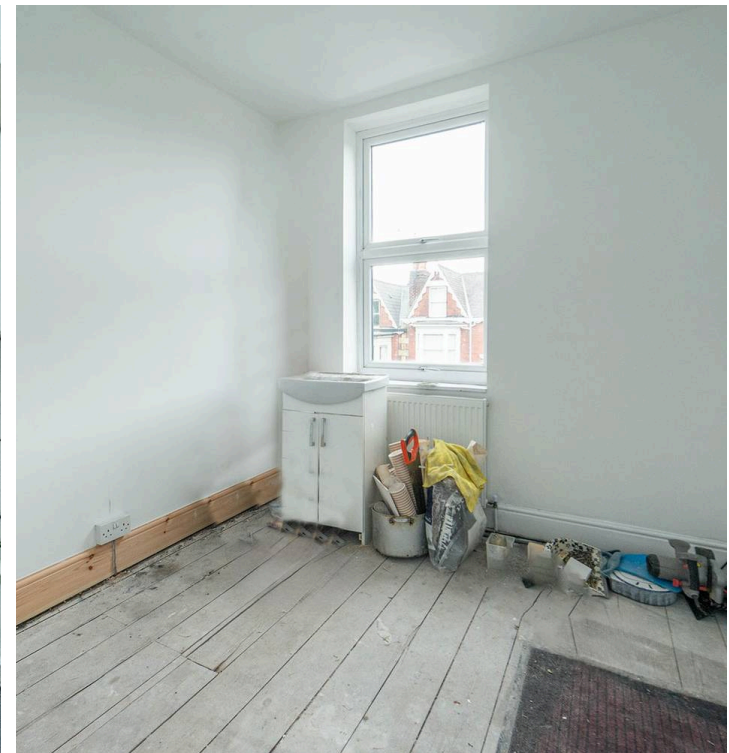
18 Edgedale Road

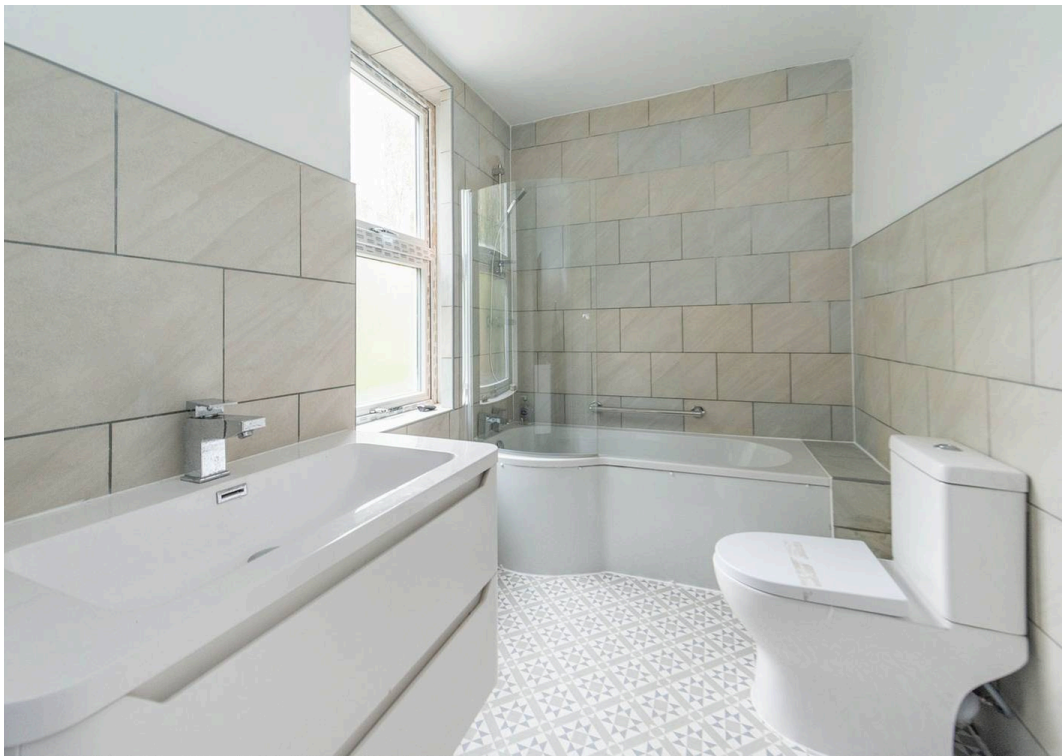
Nether Edge, Sheffield

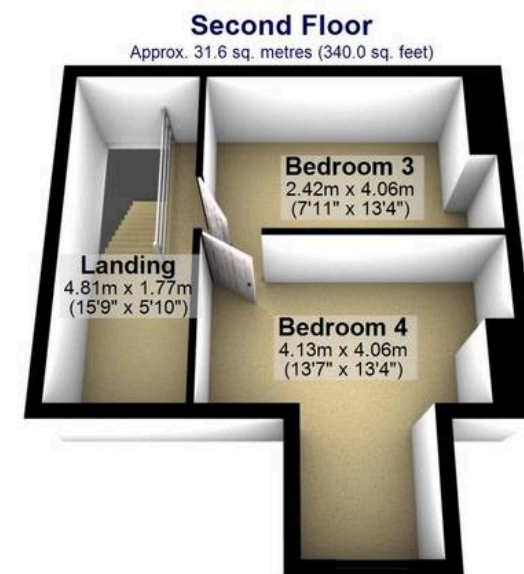
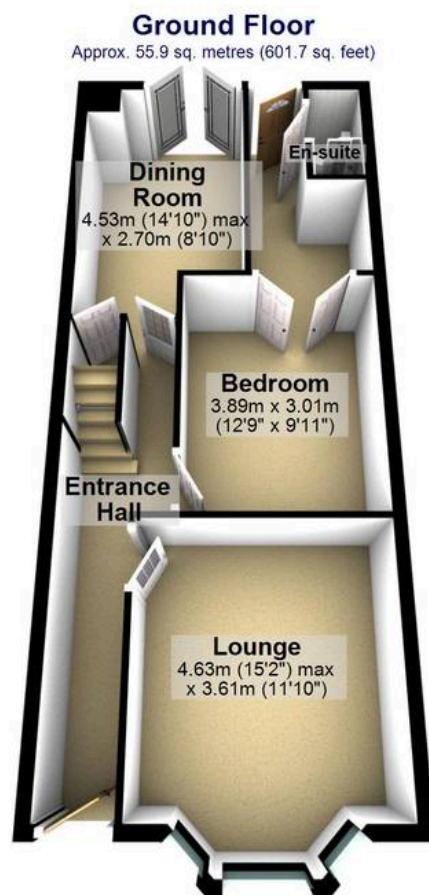
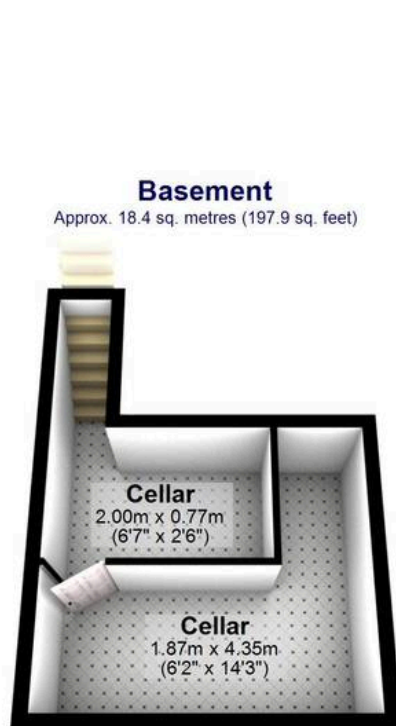
Nestled in the heart of the highly sought-after Nether Edge neighbourhood on the southwest side of the city, this substantial five-bedroom Victorian terraced home offers a rare opportunity for buyers seeking space and potential. Spread over three floors, this mid-terraced house boasts an impressive total of 1,771 square feet of living space. The property exudes character and charm, with five generously proportioned double bedrooms and two bathrooms (one on the ground floor), providing ample accommodation for a growing family. The versatile layout includes an outbuilding that presents the perfect opportunity to be transformed into a home office, catering to the modern demand for remote working spaces.

Council Tax band: B Tenure: Leasehold

- SUBSTANTIAL FIVE DOUBLE BEDROOM TWO BATHROOM VICTORIAN TERRCE HOME
- THREE FLOORS OF ACCOMMODATION THAT TOTAL AN IMPRESSIVE 1,771 SQ FEET
- OUTBUILDING THAT CAN EASILY BE MODIFIED TO WORK FROM HOME OFFICE
- MAJORITY FINISHED BUT ALLOWING THE NEW BUYER AN OPPORTUNITY TO PERSONALISE TO THEIR PREFERRED TAST AND STYLE
- EXCELLENT SCHOOLING CATCHMENTS INCLUDING MERCIA SECONDARY
- HEART OF ULTRA POPULAR NETHER EDGE ON THE SOUTH WEST OF CITY
- SHORT STROLL TO FASHIONABLE ABBEYDALE AND LONDON ROAD







Total area: approx. 164.6 sq. metres (1771.5 sq. feet)

All measurements are approximate
Plan produced using PlanUp.