

9 The Glade, Endcliffe

Sheffield

Guide Price £300,000 - £315,000

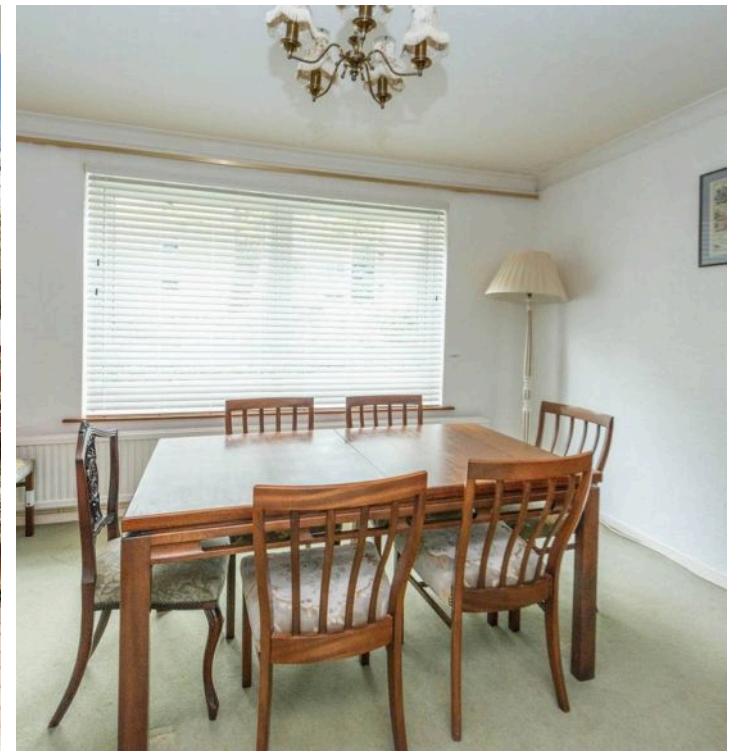
9 The Glade

Endcliffe, Sheffield

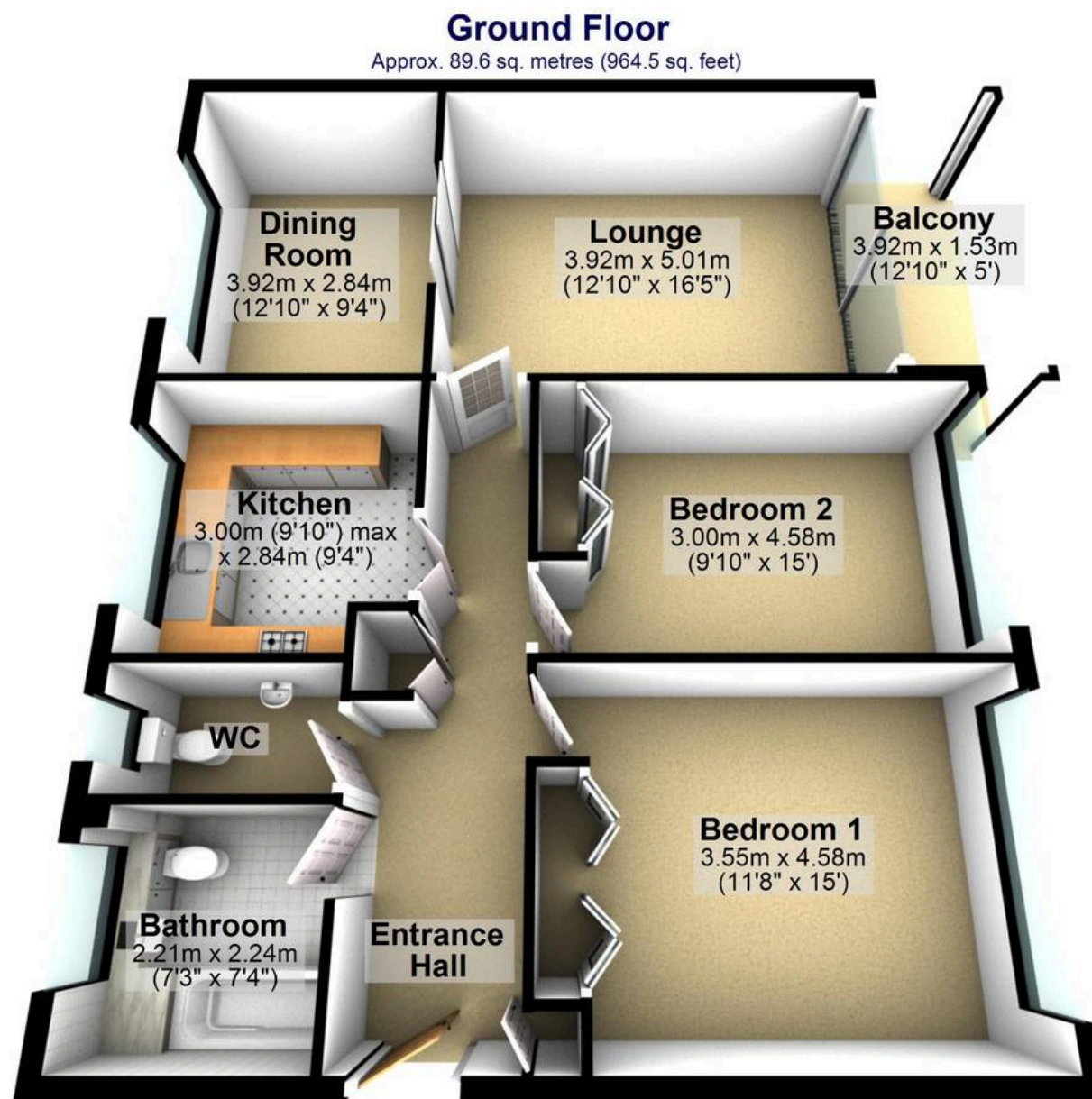
An incredibly rare opportunity has arisen to purchase this wonderful two double bedroom, ground floor apartment. Enjoying a first floor feel to the rear but with the added bonus of being ground floor accessed, this lovely property will sure to be of interest to those looking to downsize or equally the professional couple. Located at the very rear of this well sought development and in our opinion occupying one of the best spots with a peaceful and tranquil setting together with fabulous views over the expansive communal grounds, woodland and Endcliffe Park that best enjoyed from the private balcony. With 964 sq feet of spacious and light accommodation all on one level it's easy to say this apartment will need to be viewed internally to be fully appreciated. Offered to market with no upward chain involved, private single garage and ample visitor parking spaces number 9 is set within the very heart of Endcliffe.

Council Tax band: D Tenure: Leasehold

- FABULOUS TWO DOUBLE BEDROOM GROUND FLOOR APARTMENT
- ELEVATED AT THE REAR TO GIVE A FEELING OF A FIRST FLOOR POSITION
- INCREDIBLY RARE OPPORTUNITY TO MARKET WITH NO UPWARD CHAIN AND VIEWING ESSENTIAL
- PRIVATE BALCONY WITH VIEWS OVER THE COMMAL GROUNDS AND ENDCLIFFE PARK
- PERFECT FOR THOSE LOOKING TO DOWNSIZE OR THE PROFESSIONAL COUPLE
- 964 SQ FEET OF SPACIOUS AND LIGHT ACCOMMODATION







Total area: approx. 89.6 sq. metres (964.5 sq. feet)

All measurements are approximate
Plan produced using PlanUp.