



WHITEHORNES

Buy. Sell. Let. Relax!

0114 268 8533
info@whitehorns.com
www.whitehorns.com

49 The Spinney, Dore, Sheffield

Sheffield

Offers in Region of **£224,995**

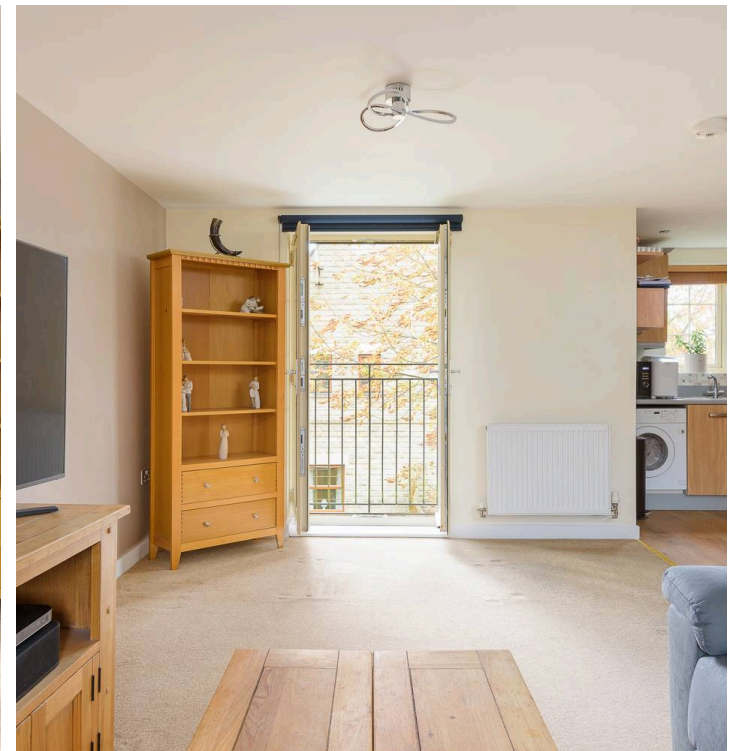
49 The Spinney, Dore

Sheffield

This two-bedroomed apartment situated in the heart of ultra-popular Dore presents an ideal opportunity for first-time buyers, professional couples, or those looking to downsize. Nestled on the cusp of the Peak District, this property offers a perfect combination of city living and countryside charm. Offering spacious and light accommodation throughout, it is a short stroll away from the village centre and its array of amenities. Viewing of this delightful home is strongly recommended to fully appreciate its many qualities. Inside, the apartment boasts an open plan living room with a Juliet balcony, providing an abundance of natural light and a great space. Situated within a private, secluded, and exclusive development. The property is leasehold and falls under council tax band C. Council Tax band: C

Tenure: Leasehold

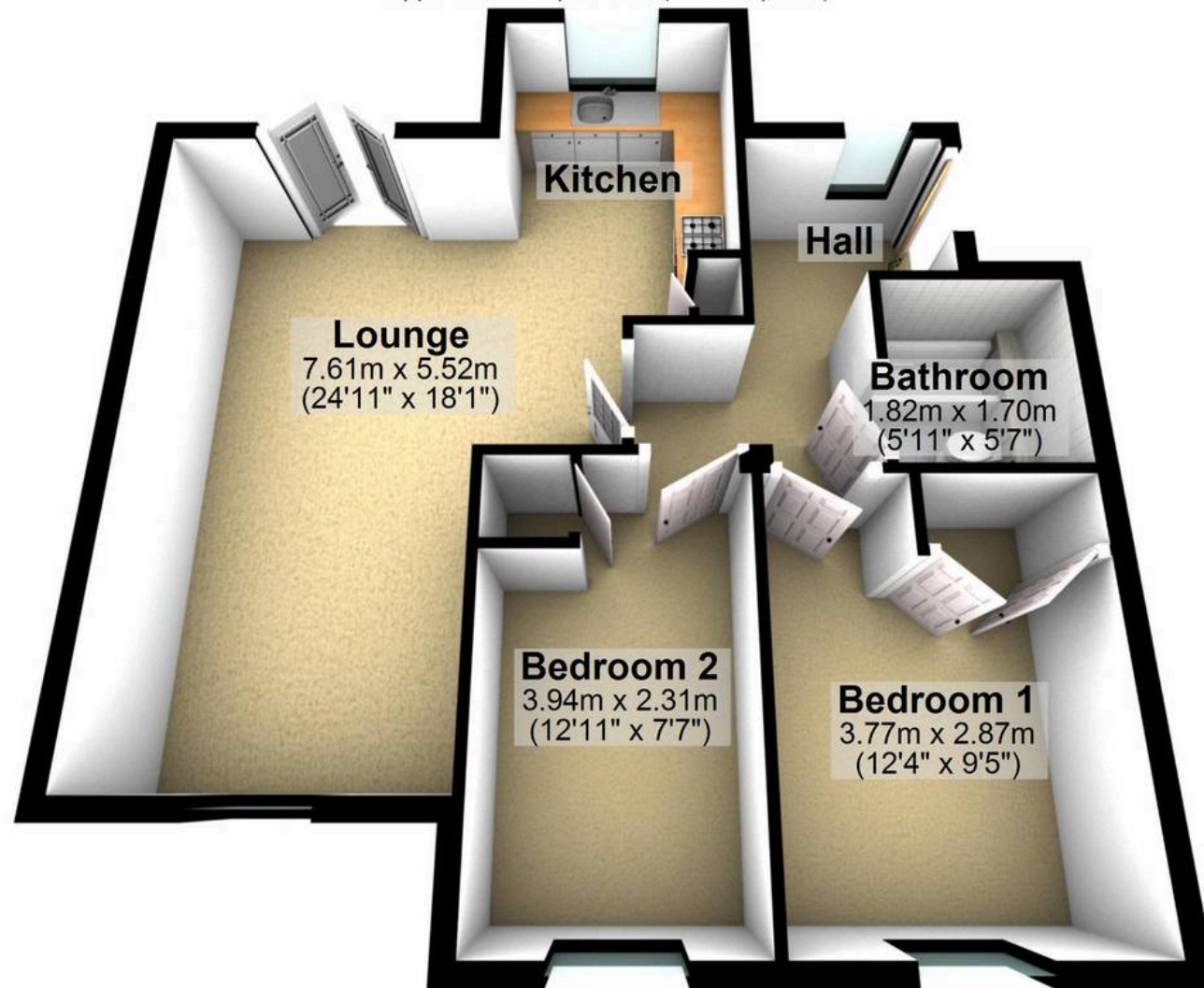
- TWO BEDROOMED APARTMENT
- HEART OF ULTRA POPULAR DORE
- PERFECT FOR THE FIRST TIME BUYER PROFESSIONAL COUPLE OR THOSE LOOKING TO DOWN SIZE
- ON THE CUSP OF THE PEAK DISTRICT
- SPACIOUS AND LIGHT ACCOMMODATION THROUGHOUT
- SHORT STROLL TO THE VILLAGE CENTRE AND AMENITIES
- OPEN PLAN LIVING ROOM WITH JULIET BALCONY
- PRIVATE SECLUDED AND EXCLUSIVE DEVELOPMENT
- TWO PRIVATE PARKING SPACES WITH ONE UNDER CROFT VIEWING ESSENTIAL TO DO FULL JUSTICE
- LEASEHOLD PROPERTY WITH 108 YEARS LEFT AND COUNCIL TAX BAND C £2021 P/A





First Floor

Approx. 60.1 sq. metres (646.4 sq. feet)



Total area: approx. 60.1 sq. metres (646.4 sq. feet)

All measurements are approximate
Plan produced using PlanUp.



WHITEHORNS

Buy. Sell. Let. Relax!

0114 268 8533
info@whitehorns.com
www.whitehorns.com