



**47 Alderson Place, Highfield's**  
Sheffield

Guide Price £215,000 - £225,000



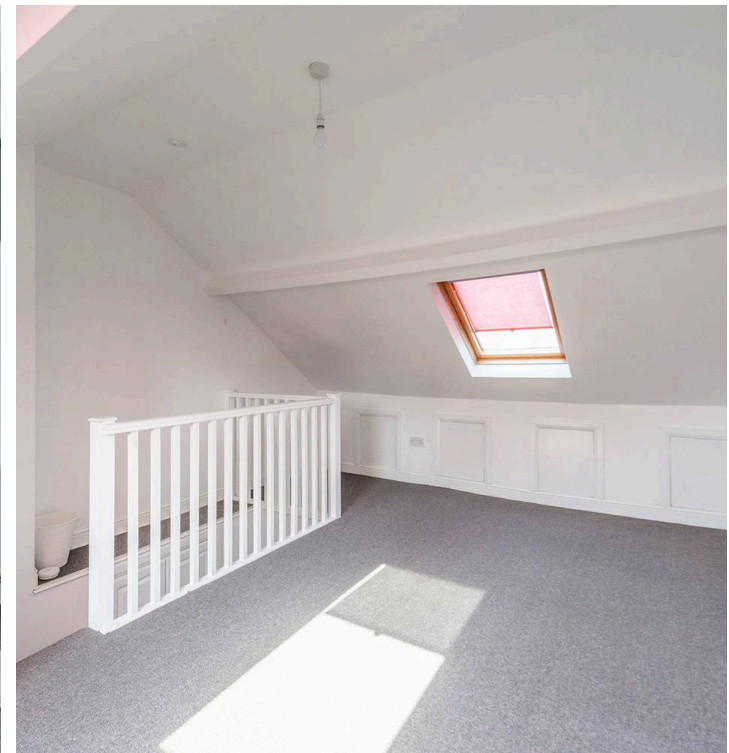
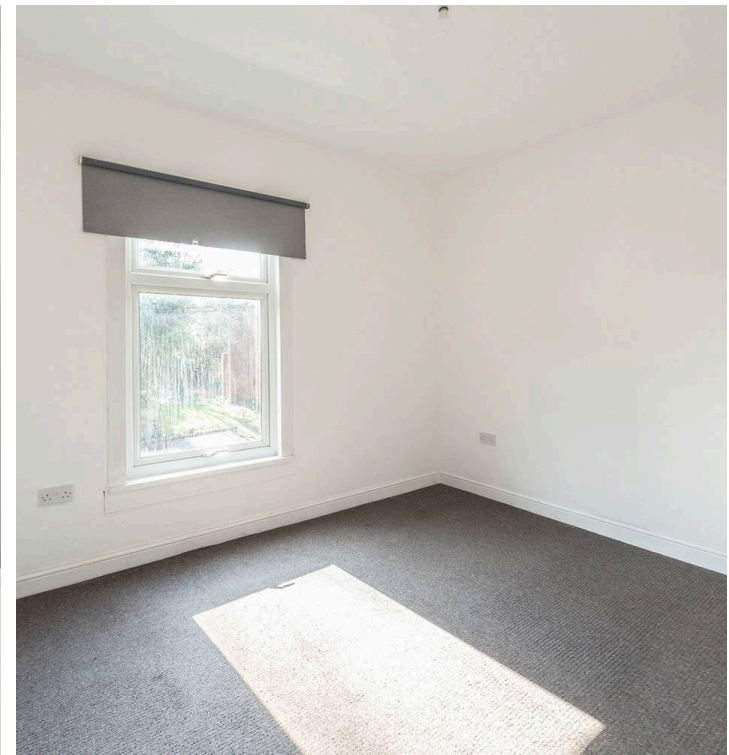
# 47 Alderson Place

Highfield's, Sheffield

An absolutely gorgeous three good sized bedroomed, period Victorian end of terrace home. With three superb floors of accommodation that total an impressive 1,067 sq feet together with lovely private garden and residents parking scheme to the front. Having careful to retain the original period features, character and charm associated with a property from this era and effortlessly combined them with a cool, sophisticated contemporary style that is sure to be super popular with the young professional couple, first time buyers and investors alike, it's easy to say that viewing is absolutely essential to fully appreciate this gem of a property. Quietly tucked away on this no through road within the very heart of fashionable Highfields, number 47 is within walking distance to central Sheffield, university campus and numerous independent cafes, eateries and shops are close by on London Road.

Council Tax band: A Tenure: Leasehold

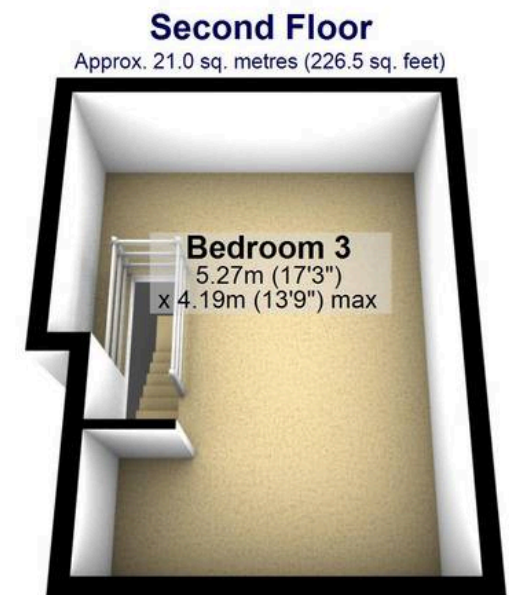
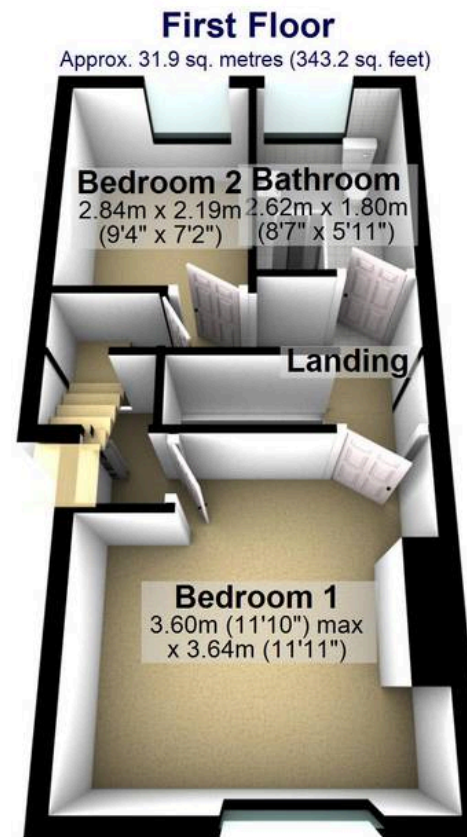
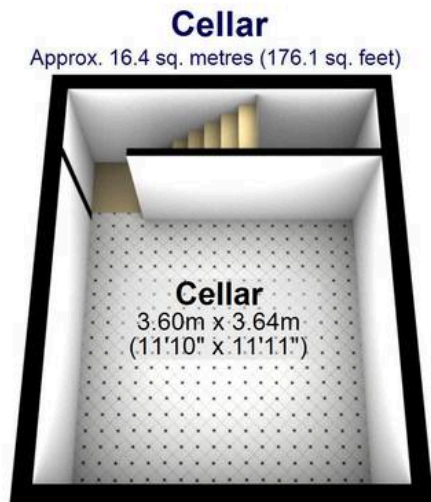
- FABULOUS THREE BEDROOM PERIOD END OF TERRACE
- LOCATED ON THIS QUIET TUCKED AWAY NO THROUGH ROAD WITH RESIDENT PARKING SCHEME TO THE FRONT
- THREE SMARTLY PRESENTED FLOORS OF ACCOMMODATION THAT TOTAL AN IMPRESSIVE 1,067 SQ FEET
- FINISHED INTERNALLY TO SUPER HIGH STANDARD THROUGHOUT BY THE CURRENT VENDORS
- PERFECT FOR THE FIRST BUY PROFESSIONAL COUPLE OR THE INVESTOR
- HEART OF FASHIONABLE HIGHFIELD'S WITHIN WALKING DISTANCE TO CENTRAL SHEFFIELD
- NUMEROUS LOCAL INDEPENDENT EATERIES CAFES AND SHOPS ON LONDON ROAD CLOSE BY











Total area: approx. 99.1 sq. metres (1066.9 sq. feet)

All measurements are approximate  
Plan produced using PlanUp.