



WHITEHORNES

Buy. Sell. Let. Relax!

0114 268 8533
info@whitehorns.com
www.whitehorns.com

37 Chapman Close, Sheffield

Sheffield

In Excess of **£475,000**

37 Chapman Close

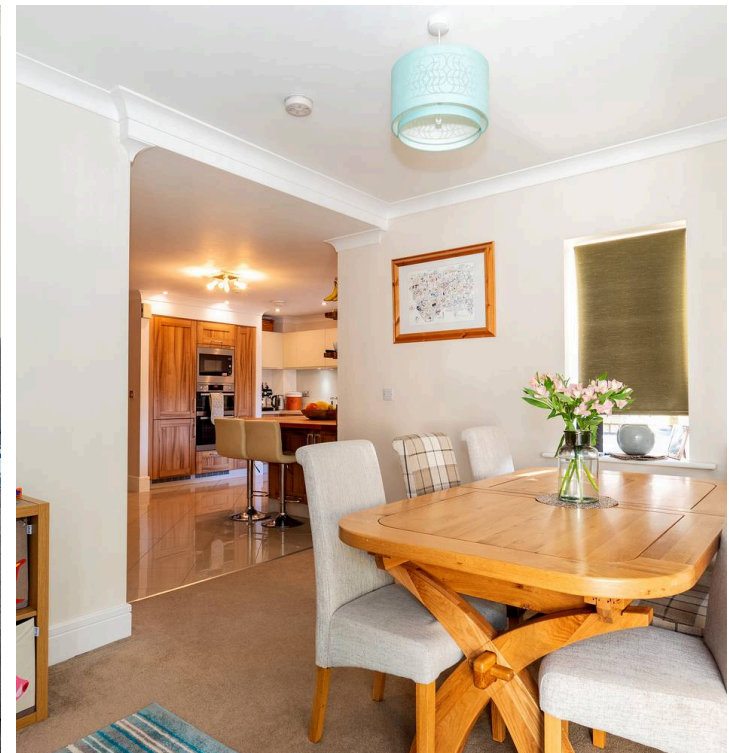
Sheffield, Sheffield

An exceptional four bedroomed, two bathroomed, modern detached family home. Offering the epitome of contemporary modern open plan living on this well sought after development in the heart of Stannington one of Sheffield's most sought after suburbs within catchment for reputable schools along with easy access to the open countryside, walking distance to transport links such as the tram stop and numerous amenities, number 37 must be viewed internally to be fully appreciated. In brief the accommodation arranged over two floors comprises entrance hall, kitchen/diner, living room, WC, four bedrooms and two bathrooms. Outside ample parking to the front and an stunning rear landscaped family gardens along with a superb enclosed patio.

Council Tax band: E

Tenure: Freehold

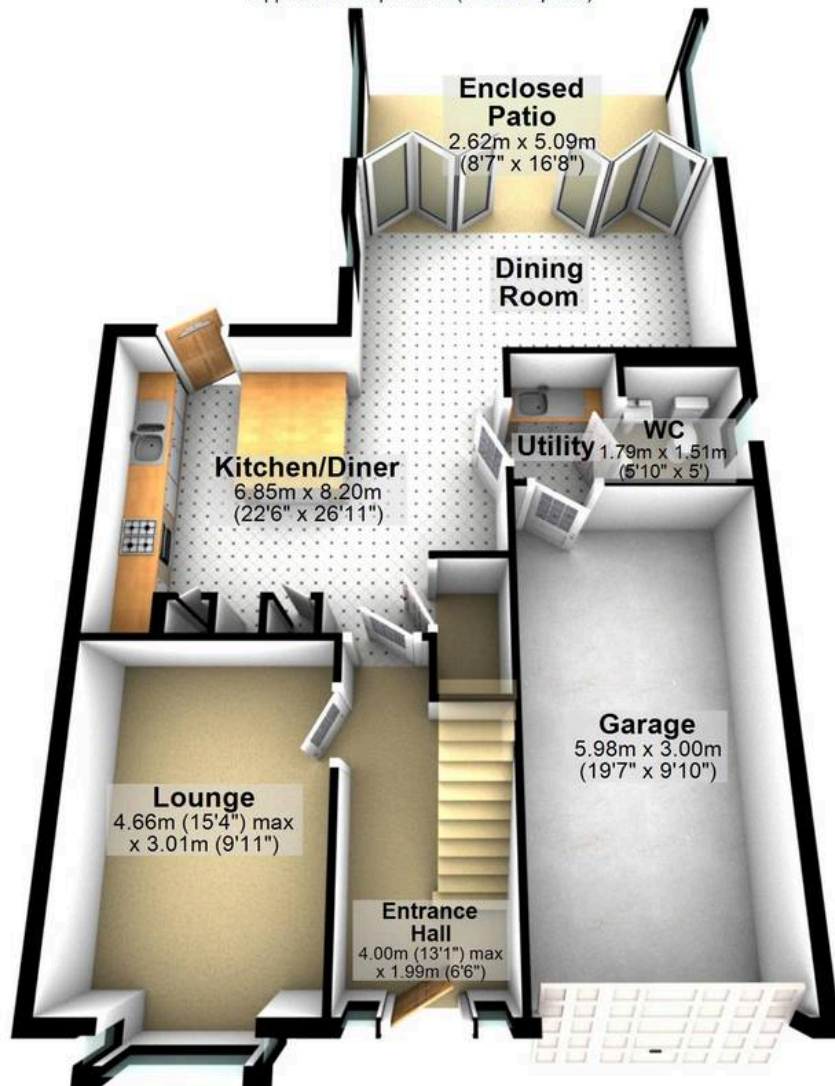
- FOUR BEDROOMED DETACHED PROPERTY
- LOCAL SCHOOLING CATCHMENT INCLUDING FORGE VALLEY SECONDARY SCHOOL
- VIEWING IS ESSENTIAL TO DO FULL JUSTICE
- SOLAR PANELS AND EPC RATING B
- LOCATED IN THE HEART OF THE WELL SOUGHT AFTER STANNINGTON
- IDEAL PROPERTY FOR YOUNG FAMILIES
- COUNCIL TAX BAND E £2,274 P/A
- FREEHOLD PROPERTY
- AMPLE OFF ROAD PARKING AND ELECTRIC CAR CHARGING PORT
- LARGE REAR GARDEN AND SUPERB VERANDA WITH SCREEN





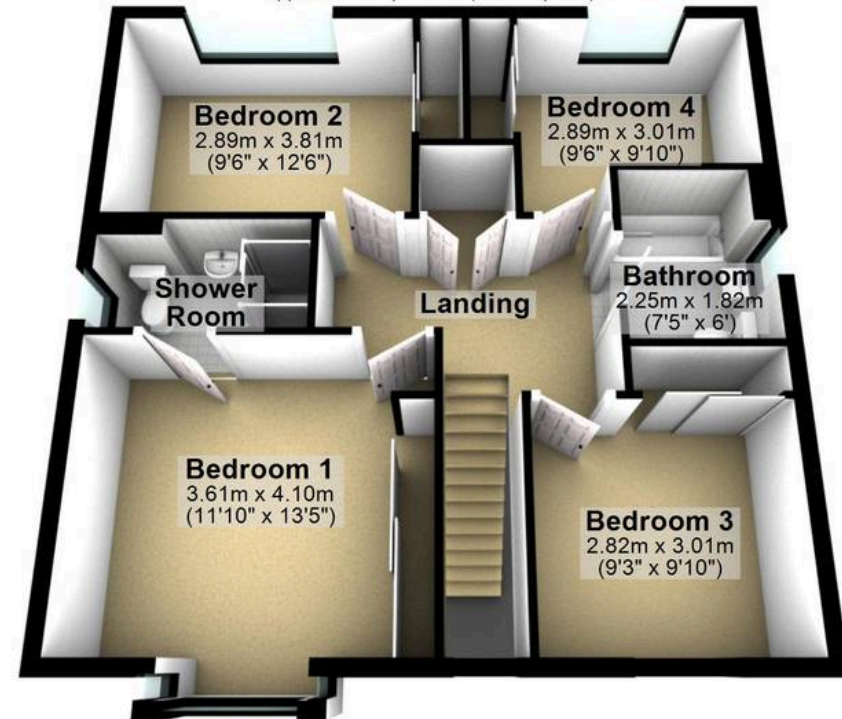
Ground Floor

Approx. 95.2 sq. metres (1025.0 sq. feet)



First Floor

Approx. 66.9 sq. metres (720.0 sq. feet)



Total area: approx. 162.1 sq. metres (1744.9 sq. feet)

All measurements are approximate
Plan produced using PlanUp.