

17 Mount Street, Sharrow
Sheffield

Guide Price £175,000

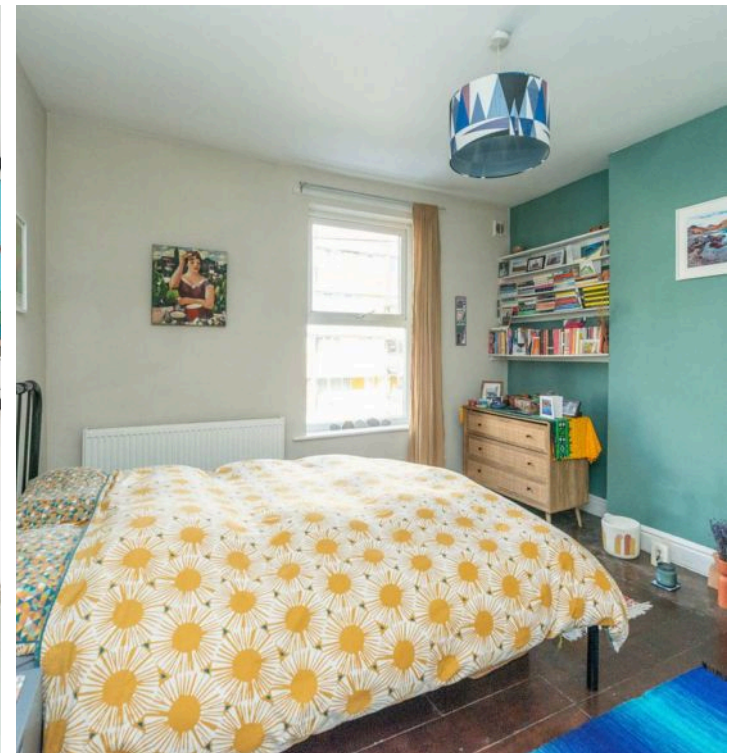
17 Mount Street

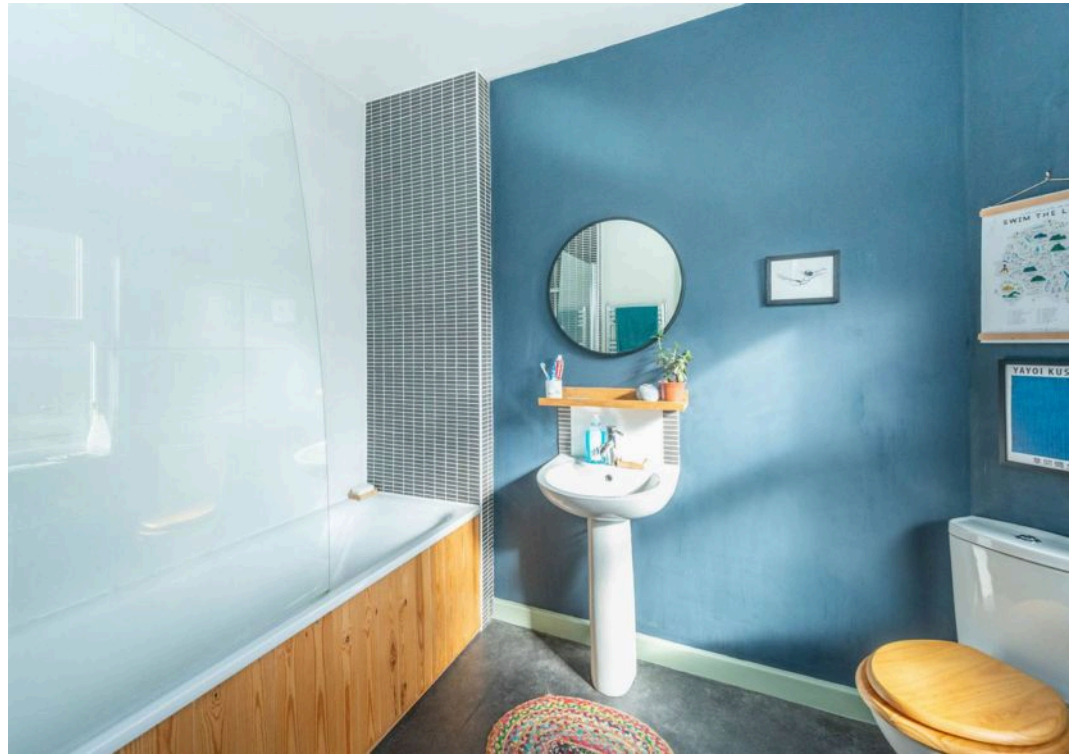
Sharrow, Sheffield

This fabulous property presents an excellent opportunity to own a delightful two double bedroom end of terrace house in the heart of the ultra-popular Sharrow suburb in the South West of the city. This period Victorian property boasts two double bedroom's ,a larger than average bathroom and spans a generous 694 sq ft across three floors, offering ample light and space throughout. The accommodation is thoughtfully laid out, with a lovely rear enclosed garden, on street resident parking adds to the convenience of this property, making it an ideal choice for first-time buyers, investors, or professional couples seeking a well-connected home. Situated within close proximity to principal hospitals, central Sheffield, The Peak District and universities, this property also offers easy access to a range of amenities, including numerous local independent cafes, eateries, and shops right on

Council Tax band: A Tenure: Leasehold

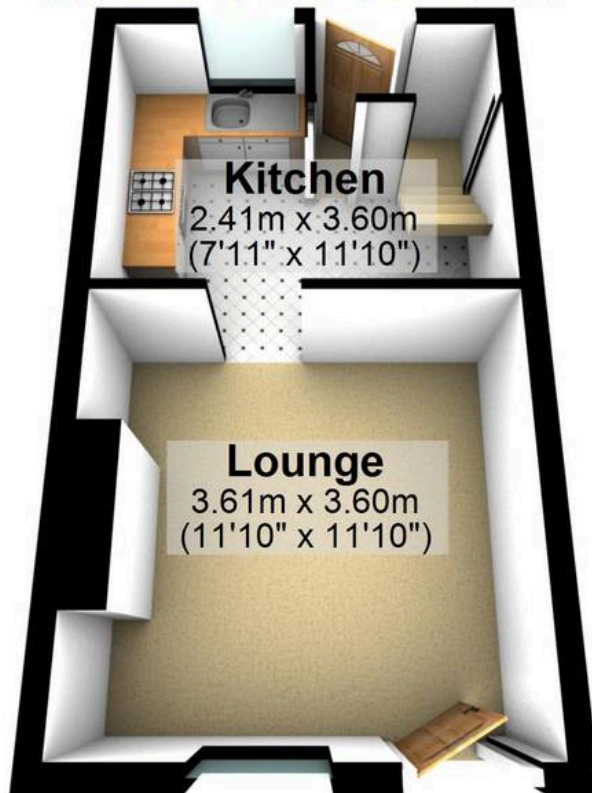
- TWO DOUBLE BEDROOMED PERIOD VICTORIAN END OF TERRACE HOUSE
- ACCOMMODATION ACROSS THREE FLOORS TOTALLING AN IMPRESSIVE 694 SQ FT
- LOVELY REAR ENCLOSED GARDEN AND ON STREET RESIDENT PARKING
- VIEWING ADVISED TO SEE THE FULL SIZE AND POTENTIAL ON OFFER
- HEART OF ULTRA POPULAR SHARROW ON THE SOUTH WEST OF THE CITY WITHIN S11 SUBURB
- PERFECT FOR THE FIRST TIME BUYER INVESTMENT OR PROFESSIONAL COUPLE
- NUMEROUS LOCAL INDEPENDENT CAFES EATERIES AND SHOPS ON THE DOORSTEP





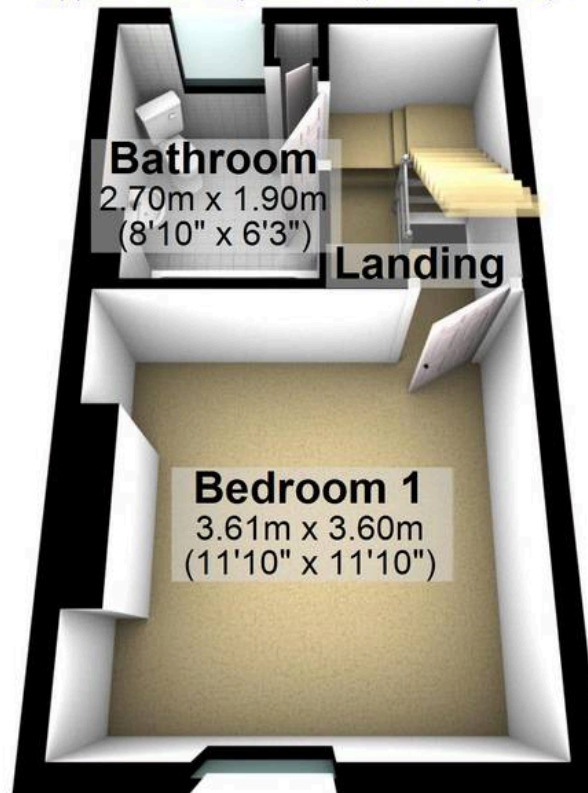
Ground Floor

Approx. 23.1 sq. metres (248.3 sq. feet)



First Floor

Approx. 23.1 sq. metres (248.3 sq. feet)



Second Floor

Approx. 18.4 sq. metres (197.6 sq. feet)



Total area: approx. 64.5 sq. metres (694.2 sq. feet)

All measurements are approximate
Plan produced using PlanUp.