

Apt 2E Broomfield house, Park Avenue, Endcliffe, Sheffield      Guide Price £295,000



# Apartment 2E Broomfield house, Park Avenue

Endcliffe, Sheffield

Quietly tucked away on the iconic Sheffield road, in the heart of the sought-after Endcliffe area in the South West of the city, this stunning three-bedroom duplex top floor apartment offers a unique opportunity for discerning buyers. Situated within an elegant stone-built detached conversion, this property boasts a private detached garage and additional residents visiting spaces. Perfect for a professional couple or those looking to downsize, this residence offers a lifestyle of convenience, modern finish that has been combined with original character and style. Endcliffe Park and the Porter Valley are just a short stroll away along with fashionable Oakbrook Road and Sharrow Vale that offer up an array of independent cafes, eateries and shops. The unique internal layout of this apartment spans two floors, totalling an impressive 1,201 sq feet of living space.

Council Tax band: C Tenure: Leasehold

- STUNNING THREE BEDROOM DUPLEX TOP FLOOR APARTMENT
- LOCATED ON THIS ICONIC SHEFFIELD ROAD WITHIN THE VERY HEART OF ENDCLIFFE ON THE SOUTH WEST OF THE CITY
- FORMING PART OF THIS ELEGANT STONE BUILT DETACHED CONVERSION
- PRIVATE DETACHED GARAGE
- ENDCLIFFE PARK AND THE PORTER VALLEY ARE A SHORT STROLL AWAY
- PERFECT FOR THE PROFESSIONAL COUPLE AND THOSE LOOKING TO DOWNSIZE
- UNIQUE INTERNAL LAYOUT THAT REALLY NEEDS TO BE VIEWED TO BE FULLY APPRECIATED

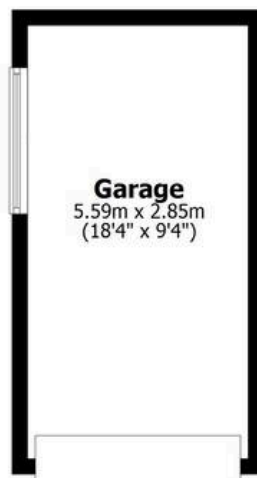




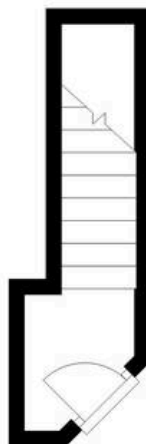




**Garage**  
Approx. 15.9 sq. metres (171.4 sq. feet)



**First Floor**  
Approx. 5.3 sq. metres (57.3 sq. feet)



**Top Floor**  
Approx. 90.4 sq. metres (972.6 sq. feet)



Total area: approx. 111.6 sq. metres (1201.3 sq. feet)

All measurements are approximate  
Yorkshire EPC & Floor Plans Ltd  
Plan produced using PlanUp.

**Apt 2e Broomfield House, Park Avenue**