



WHITEHORSES

Buy. Sell. Let. Relax!

0114 268 8533
info@whitehorses.com
www.whitehorses.com

46a Remington Road, Sheffield

Sheffield

Offers in Region of **£169,950**

46a Remington Road

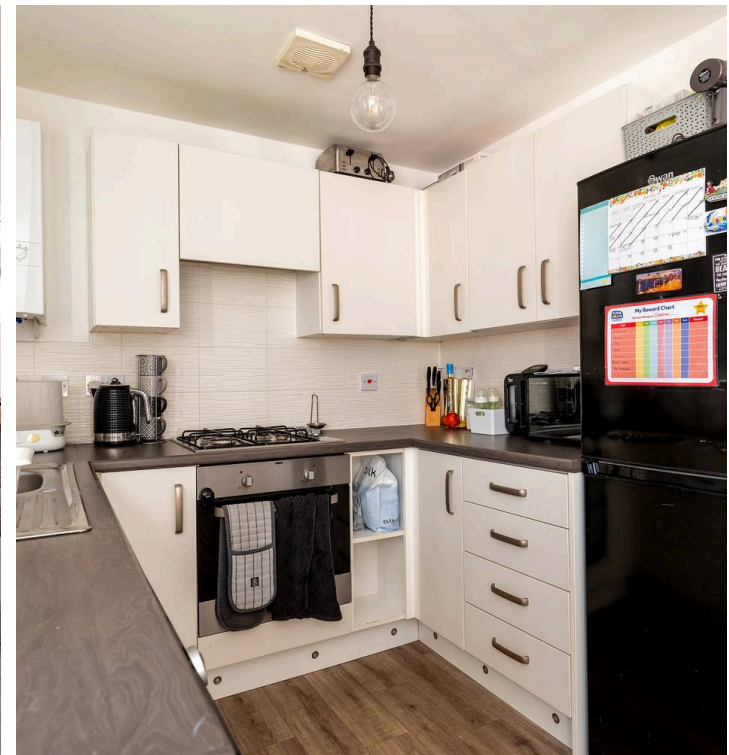
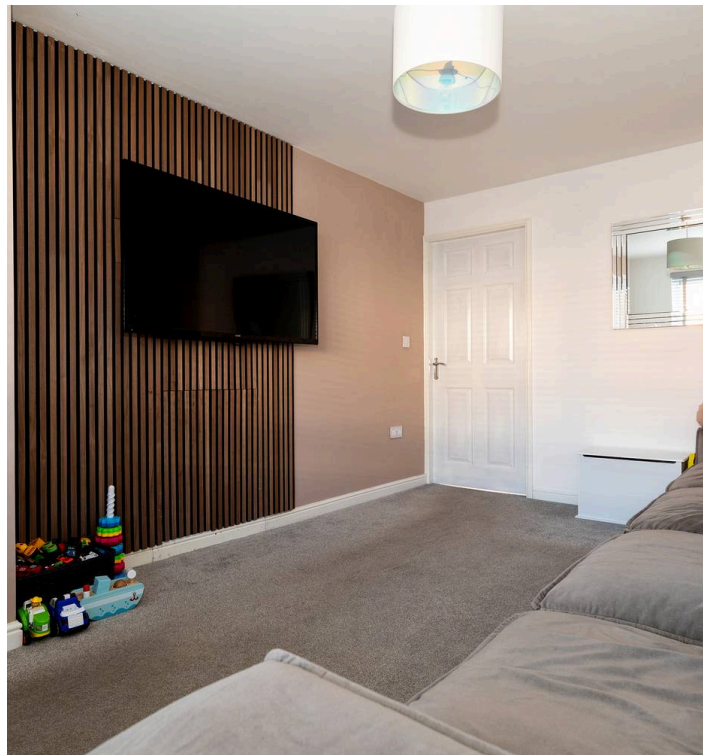
Sheffield, Sheffield

Perfect for first time buyers is this immaculately presented two double bedroomed semi detached family home. Having been tastefully finished throughout to a very high standard this modern and stylish home sits in the heart of this popular residential suburb with easy access to not only fantastic transport links as well as a wealth of local amenities and reputable local schools. Briefly consists of entrance hallway, spacious lounge, well appointed kitchen/dining room with rear access, two great sized double bedrooms and family bathroom. Outside is a pleasant and private rear garden and to the front is a large driveway.

Council Tax band: B

Tenure: Freehold

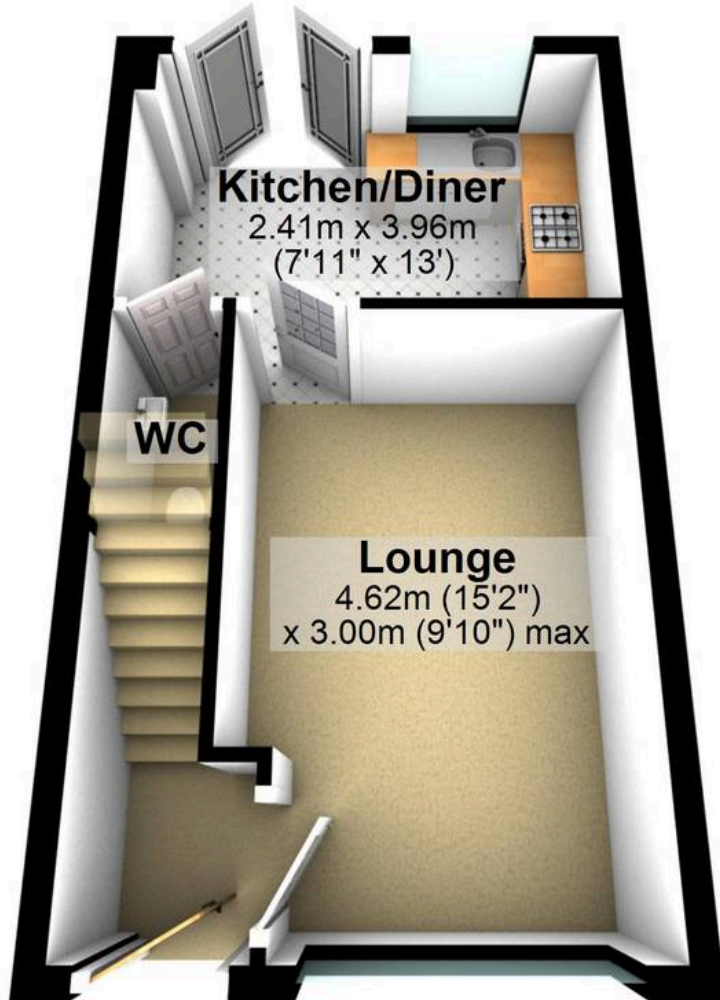
- TWO DOUBLE BEDROOMED SEMI DETACHED PROPERTY
- FINISHED TO A SUPERB STANDARD BY THE CURRENT VENDORS
- CLOSE TO LOCAL AMENITIES AND TRANSPORT LINKS
- AMPLE OFF ROAD PARKING
- LIGHT AND SPACIOUS ACCOMMODATION ACROSS TWO FLOORS
- LOCAL REPUTABLE SCHOOLS INCLUDING ECCLESFIELD PRIMARY SCHOOL
- PERFECT FOR FIRST TIME BUYERS OR GROWING FAMILIES ALIKE
- PRIVATE AND ENCLOSED REAR GARDEN AND PATIO
- FREEHOLD PROPERTY AND COUNCIL TAX BAND B
- £1,769 P/A
- EPC RATING B





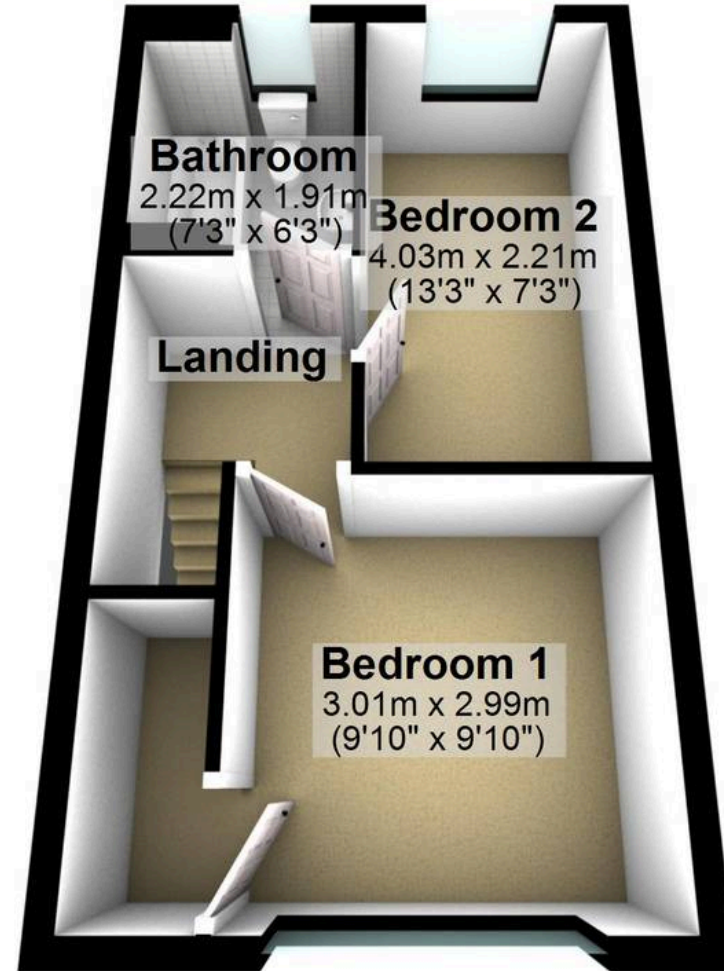
Ground Floor

Approx. 28.2 sq. metres (303.7 sq. feet)



First Floor

Approx. 28.2 sq. metres (303.7 sq. feet)



Total area: approx. 56.4 sq. metres (607.4 sq. feet)

All measurements are approximate
Plan produced using PlanUp.



WHITEHORNS

Buy. Sell. Let. Relax!

0114 268 8533
info@whitehorns.com
www.whitehorns.com