



28 Machon Bank Road, Nether Edge

Sheffield

Guide Price £250,000

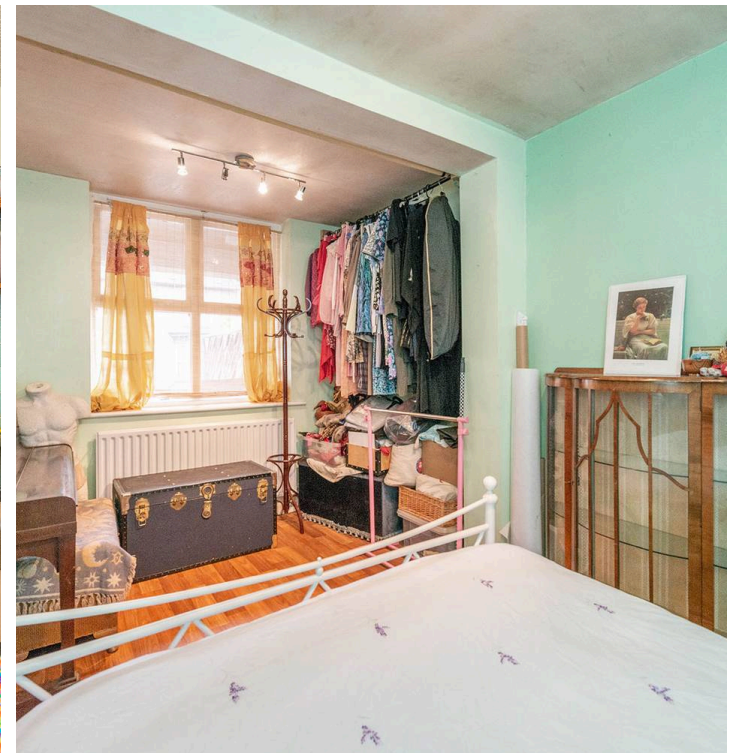
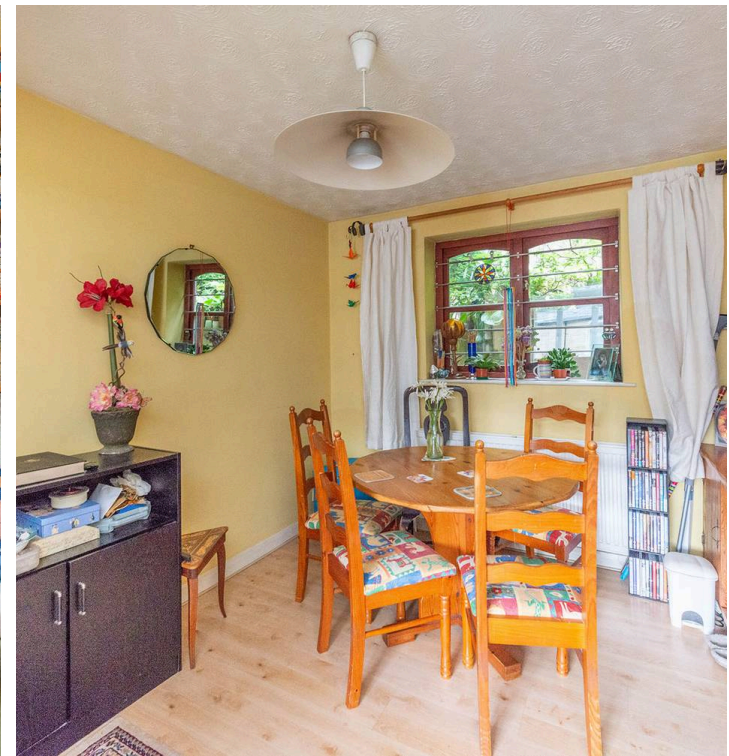


## 28 Machon Bank Road

Nether Edge, Sheffield

Nestled in the heart of the ultra-popular Nether Edge suburb on the south-west side of the city, this wonderful three/four-bedroom townhouse-style semi-detached property offers a perfect blend of modern living and convenience. Its prime location allows for a short stroll to the fashionable village centre, boasting independent cafes, eateries, and shops, while excellent local school catchments, including Mercia Secondary, make it an ideal choice for both professional couples and young families alike. Adding to its appeal, an elevated position ensures both privacy and stunning views to the front, offering a peaceful retreat from the hustle and bustle of city A driveway to the front offers off-road parking for one vehicle. In addition to its enviable location in Nether Edge, residents enjoy easy access Council Tax band: C Tenure: Freehold

- WONDERFUL THREE BEDROOM TOWN HOUSE STYLE SEMI DETACHED HOME
- SHORT STROLL TO THE FASHIONABLE VILLAGE FEEL CENTRE WITH INDEPENDENT CAFES EATERIES AND SHOPS
- OFF ROAD PARKING TO THE FRONT FOR ONE VEHICLE
- EXCELLENT LOCAL SCHOOL CATCHMENTS AVAILABLE INCLUDING MERCIA SECONDARY
- PERFECT FOR THE PROFESSIONAL COUPLE OR YOUNG FAMILY ALIKE
- HEART OF ULTRA POPULAR NETHER EDGE SUBURB ON THE SOUTH WEST OF THE CITY
- EASY ACCESS TO CENTRAL SHEFFIELD THE PEAK DISTRICT AND CHELSEA PARK
- ADDITIONAL STORAGE IN THE GARAGE
- ELEVATED POSITION ENSURING PRIVACY AND VIEWS TO THE FRONT



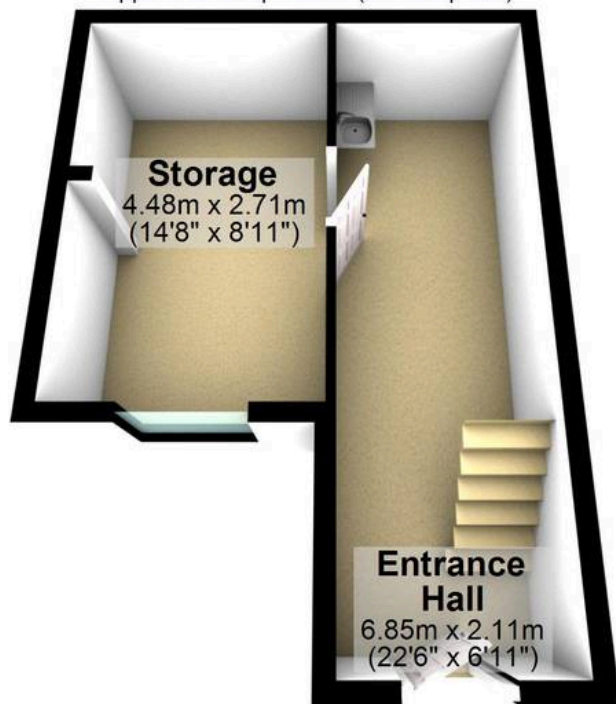






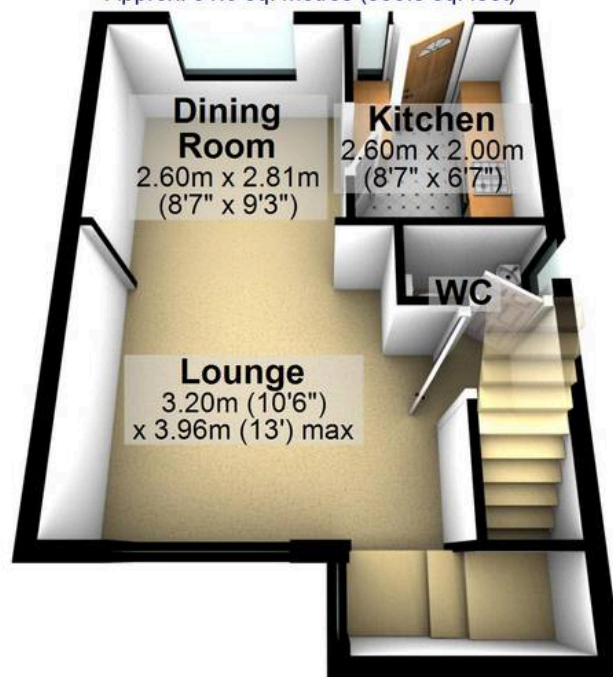
## Ground Floor

Approx. 27.0 sq. metres (291.0 sq. feet)



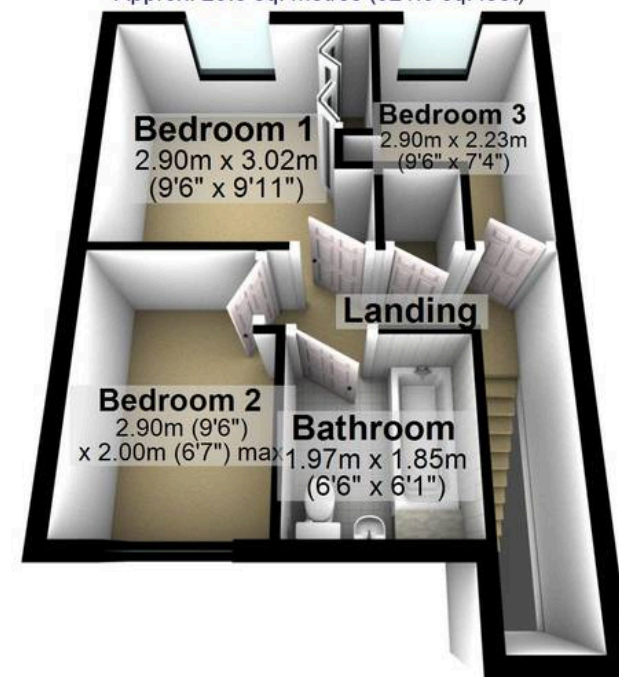
## First Floor

Approx. 31.0 sq. metres (333.8 sq. feet)



## Second Floor

Approx. 29.8 sq. metres (321.0 sq. feet)



Total area: approx. 87.9 sq. metres (945.8 sq. feet)

All measurements are approximate  
Plan produced using PlanUp.