

Flat 4, Kinder House, Holyrood Avenue, Lodge Moor,  
Sheffield

Sheffield

Guide Price

£220,000



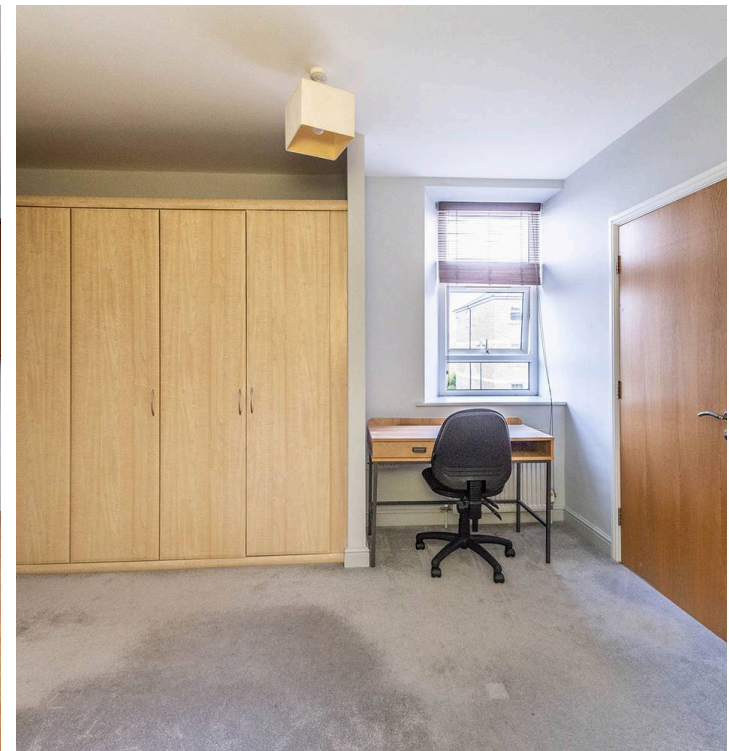
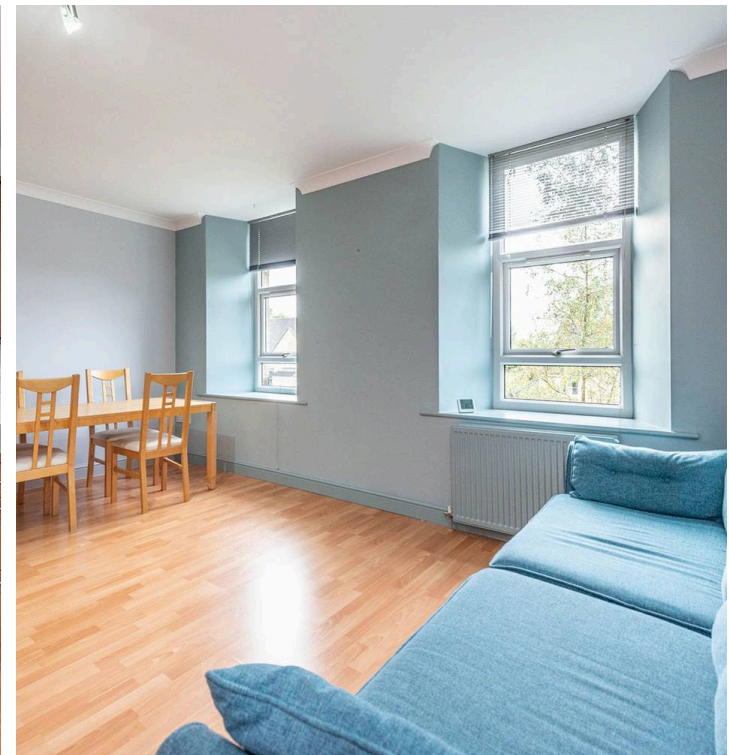
# Flat 4, Kinder House, Holyrood Avenue

Sheffield

An absolutely fabulous two double bedroom, two bathroom, first floor apartment. Forming part of this exclusive stone built residential development and quietly tucked away this beautiful property is available to market with no upward chain and vacant possession. With allocated parking bay and plenty of visitors spots, secure intercom access and lovely views to rear it's easy to say this property will be popular with the professional couple, first time buyers and those looking to downsize equally. With an open plan contemporary, fitted kitchen living diner, newly decorated throughout and recently installed combination boiler the apartment enjoys a light and spacious feel and simply must be viewed internally to be fully appreciated. Located in the very heart of ultra popular Lodge Moor on the south west of the city close to principal hospitals and universities together with numerous local amenities within

Council Tax band: C Tenure: Leasehold

- FABULOUS TWO DOUBLE BEDROOM TWO BATHROOM FIRST FLOOR APARTMENT
- FORMING PART OF THIS STUNNING STONE BUILT DEVELOPMENT
- ALLOCATED PARKING BAY AND AMPLE VISITOR BAYS ALSO AVAILABLE
- AVAILABLE TO MARKET WITH NO UPWARD CHAIN AND VACANT POSSESSION
- HEART OF ULTRA POPULAR LODGE MOOR ON THE SOUTH WEST OF THE CITY
- PERFECT FOR THE PROFESSIONAL COUPLE FIRST BUY OR THOSE LOOKING TO DOWNSIZE
- OPEN PLAN FITTED MODERN KITCHEN LIVING DINER

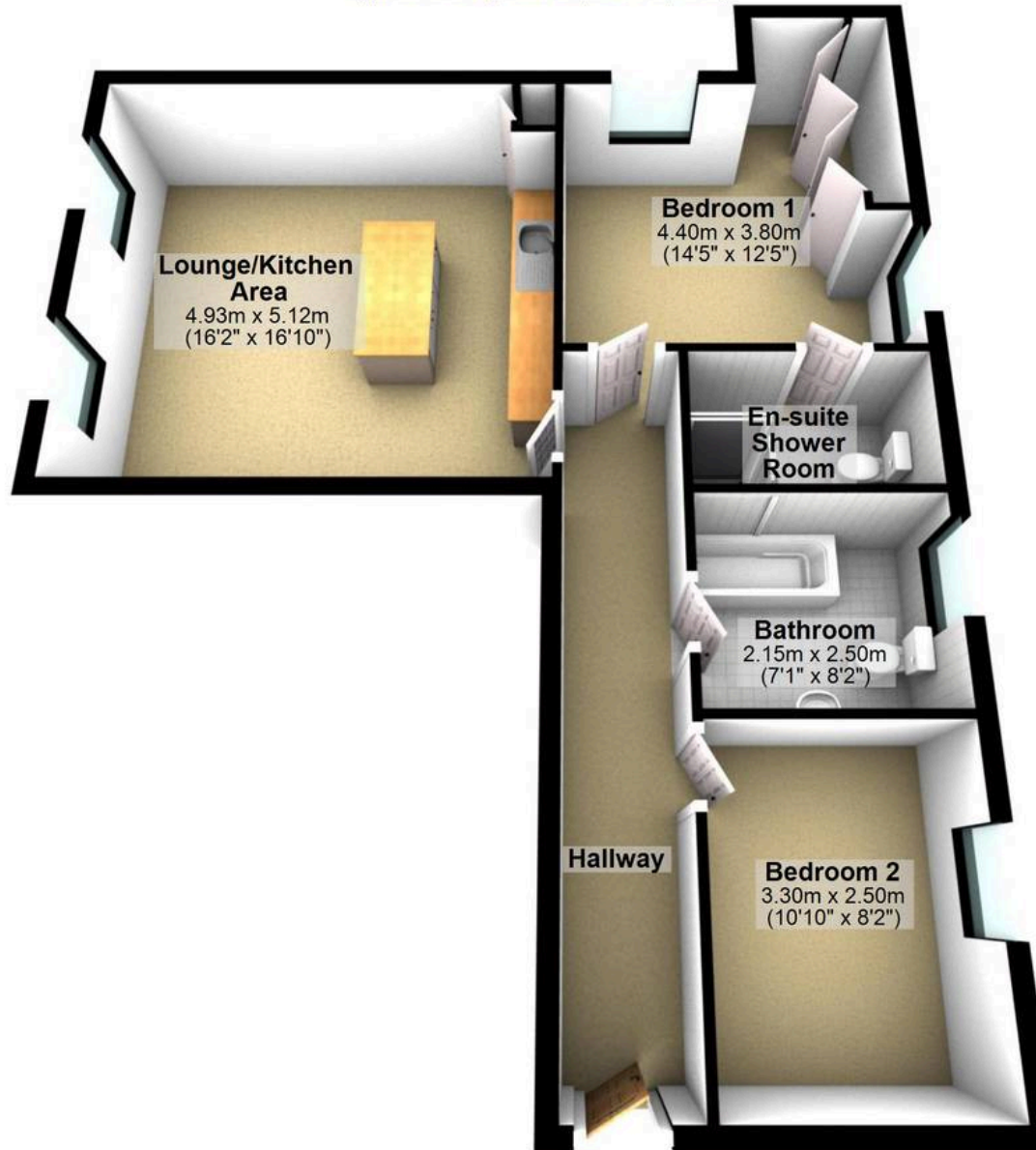








Approx. 67.8 sq. metres (729.6 sq. feet)



Total area: approx. 67.8 sq. metres (729.6 sq. feet)

All measurements are approximate  
Plan produced using PlanUp.