



WHITEHORNES

Buy. Sell. Let. Relax!

0114 268 8533
info@whitehorses.com
www.whitehorses.com



10 Pickard Drive, Sheffield

Sheffield

Guide Price **£130,000**

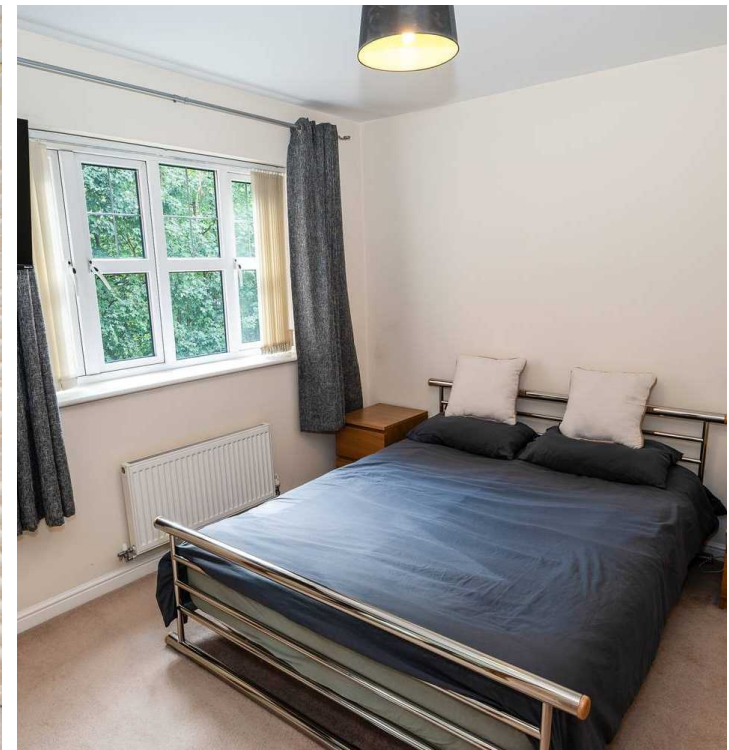
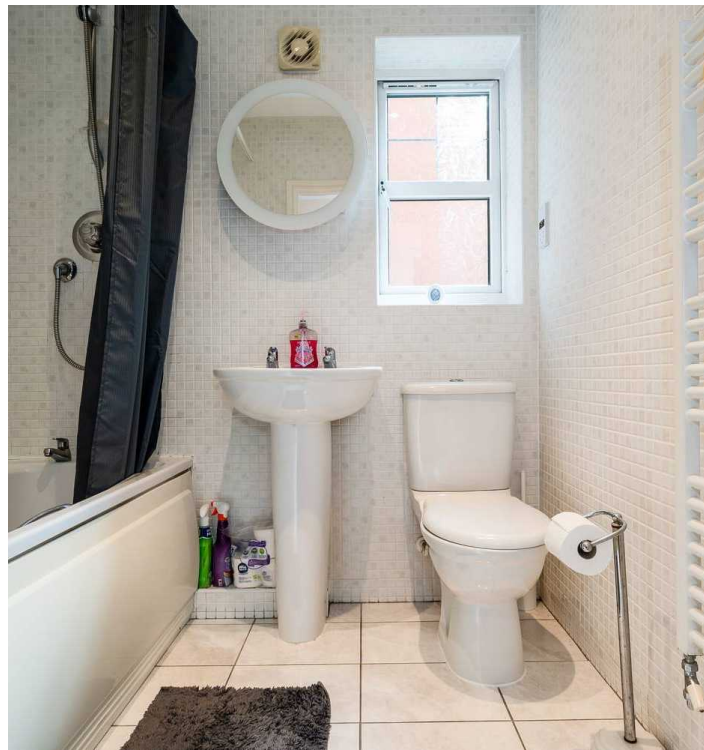
10 Pickard Drive

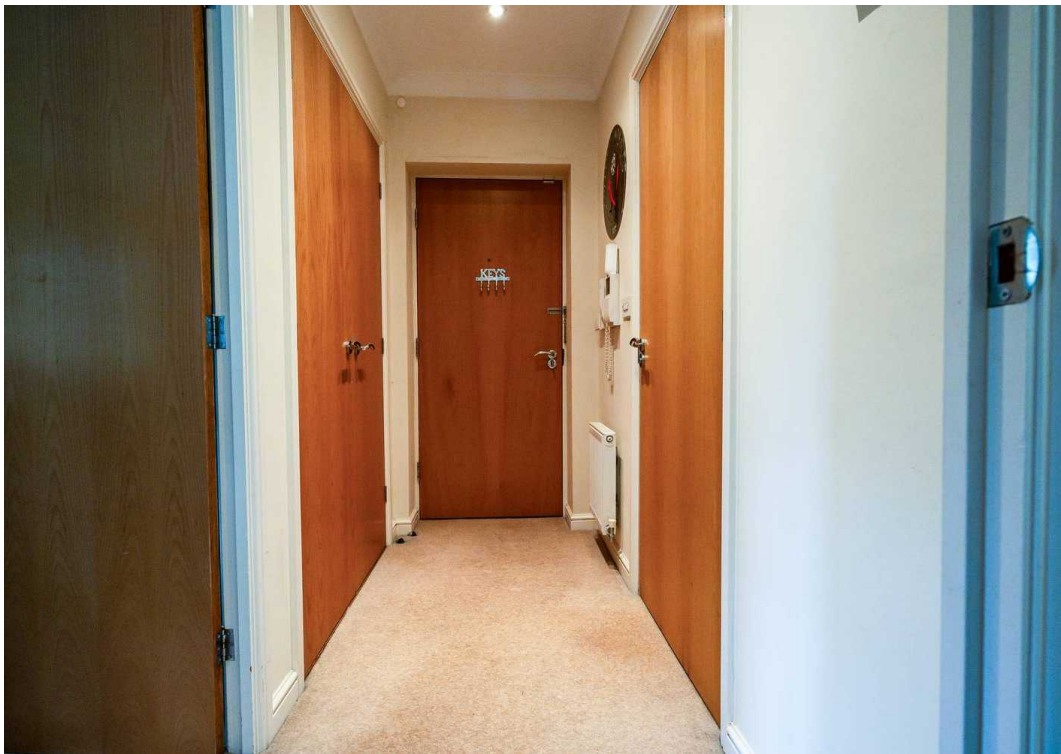
Sheffield, Sheffield

An incredibly well presented one double bed roomed, first floor apartment. Finished internally to the very highest of standards internally by the current vendors its easy to say that viewing is absolutely essential to do full justice to see the finish and size on offer by this excellent property. Forming part of this established residential development in the heart of Handsworth with superb transport links and easy access to nearby green spaces. With allocated parking to the front the property, gas central heating and intercom entrance the accommodation in brief comprises, entrance hall with storage, open plan living space, great sized double bedroom with built in storage and bathroom. Council Tax band: A

Tenure: Leasehold

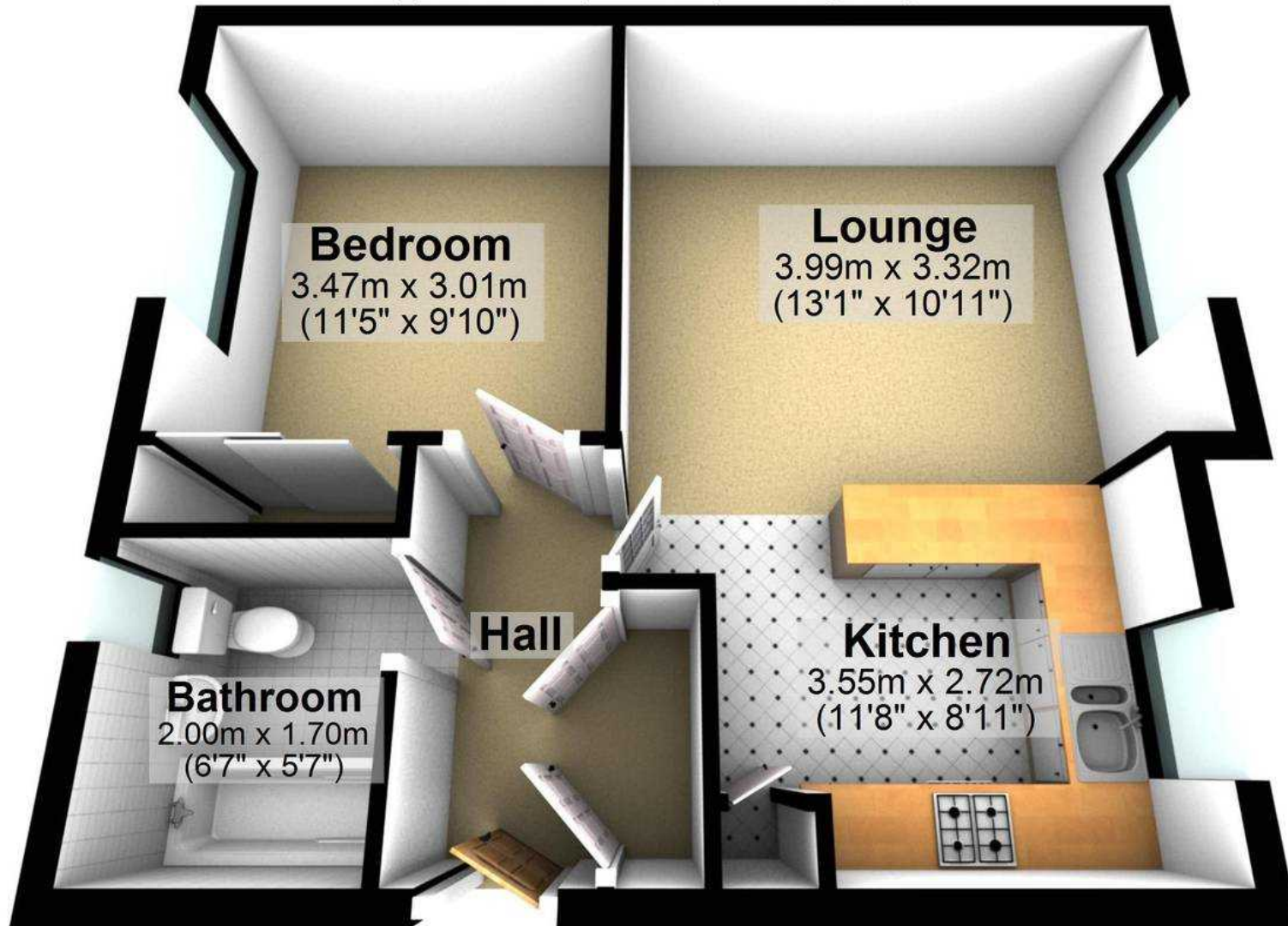
- ONE BEDROOMED FIRST FLOOR APARTMENT
- ALLOCATED PARKING
- CLOSE TO WEALTH OF LOCAL AMENITIES
- AMPLE STORAGE
- BEAUTIFUL AND LIGHT LIVING SPACE
- EXCELLENT TRANSPORT LINKS
- PERFECT FOR FIRST TIME BUYERS
- GREAT BUY TO LET OPPORTUNITY
- MODERN GAS HEATING





First Floor

Approx. 42.4 sq. metres (456.6 sq. feet)



Total area: approx. 42.4 sq. metres (456.6 sq. feet)

All measurements are approximate
Plan produced using PlanUp.