



WHITEHORSES

Buy. Sell. Let. Relax!

0114 268 8533
info@whitehorses.com
www.whitehorses.com

37 Carter Knowle Avenue, Carter Knowle

Sheffield

Guide Price £525,000 – £550,000

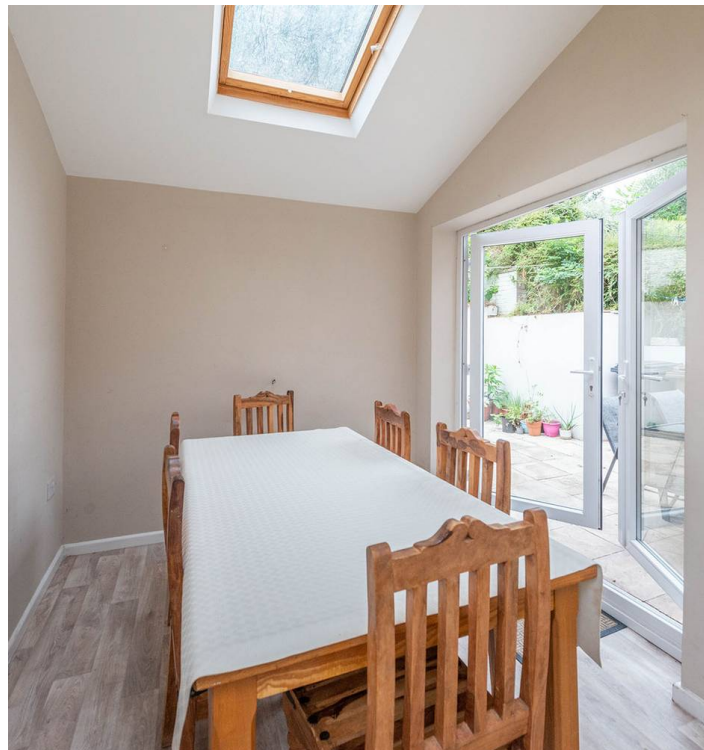
37 Carter Knowle Avenue

Carter Knowle, Sheffield

An absolutely stunning, six bedroomed, semi detached family home. Having been tastefully and skillfully extended to the side rear and loft to create three wonderful floors of light and spacious accommodation that will be perfectly suited to the growing family market. Offering an incredibly rare opportunity to market for a property of this size and style its easy to say this property will be super popular with the growing family market and simply must be viewed to be fully appreciated. With an open plan ground floor kitchen/diner that gives direct garden access together with private driveway to the front and large rear family sized garden. Quietly tucked away on this popular residential road within the very heart of sought after carter Knowle the property falls within catchment excellent local schools including Mercia and High Storrs secondary. Located within easy access of both Chelsea and Millhouses parks, plenty of local amenities are within walking distance, principal hospitals and universities are close

Council Tax band: D Tenure: Leasehold

- STUNNING SIX BEDROOM SEMI DETACHED FAMILY HOME
- TASTEFULLY EXTENDED TO THE SIDE REAR AND LOFT TO CREATE THIS INCREDIBLY SPACIOUS PROPERTY
- INCREDIBLY RARE OPPORTUNITY FOR A PROPERTY OF THIS SIZE AND STYLE TO MARKET WITH VIEWING ESSENTIAL
- PERFECTLY SET UP TO CATER FOR THE GROWING FAMILY MARKET
- HEART OF ULTRA POPULAR CARTER KNOWLE ON THE SOUTH WEST OF THE CITY
- EXCELLENT SCHOOLING CATCHMENTS INCLUDING MERCIA AND HIGH STORRS SECONDARY







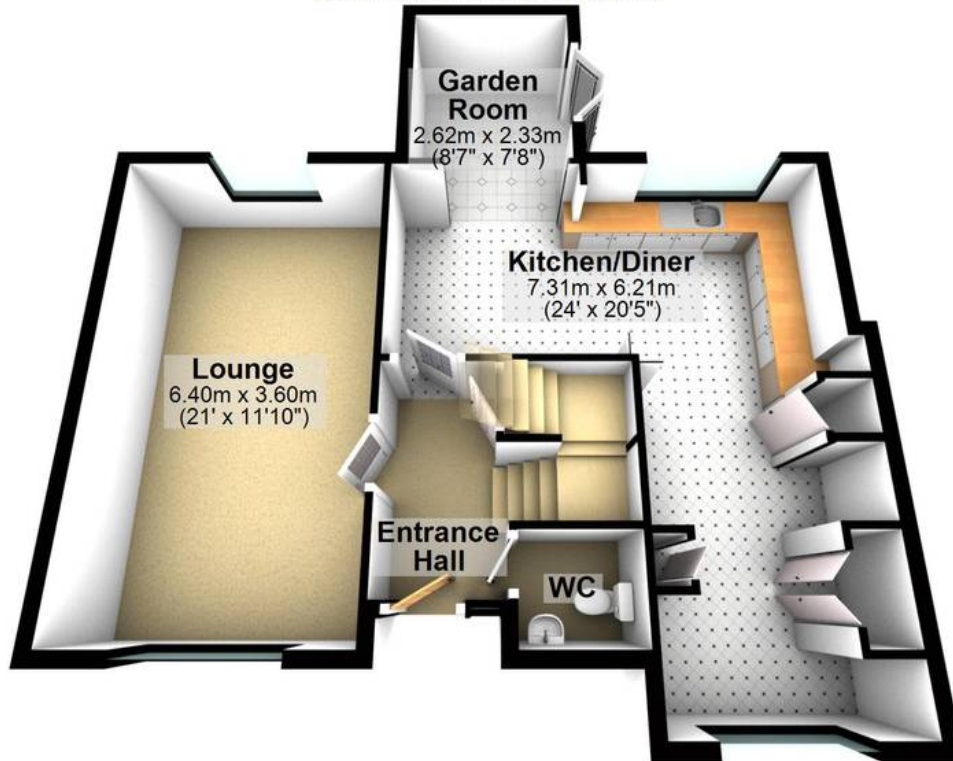
WHITEHORNES

Buy. Sell. Let. Relax!

0114 268 8533
info@whitehornes.com
www.whitehornes.com

Ground Floor

Approx. 70.9 sq. metres (763.2 sq. feet)



First Floor

Approx. 63.4 sq. metres (682.5 sq. feet)



Second Floor

Approx. 30.7 sq. metres (330.5 sq. feet)



Total area: approx. 165.0 sq. metres (1776.2 sq. feet)

All measurements are approximate
Plan produced using PlanUp.