



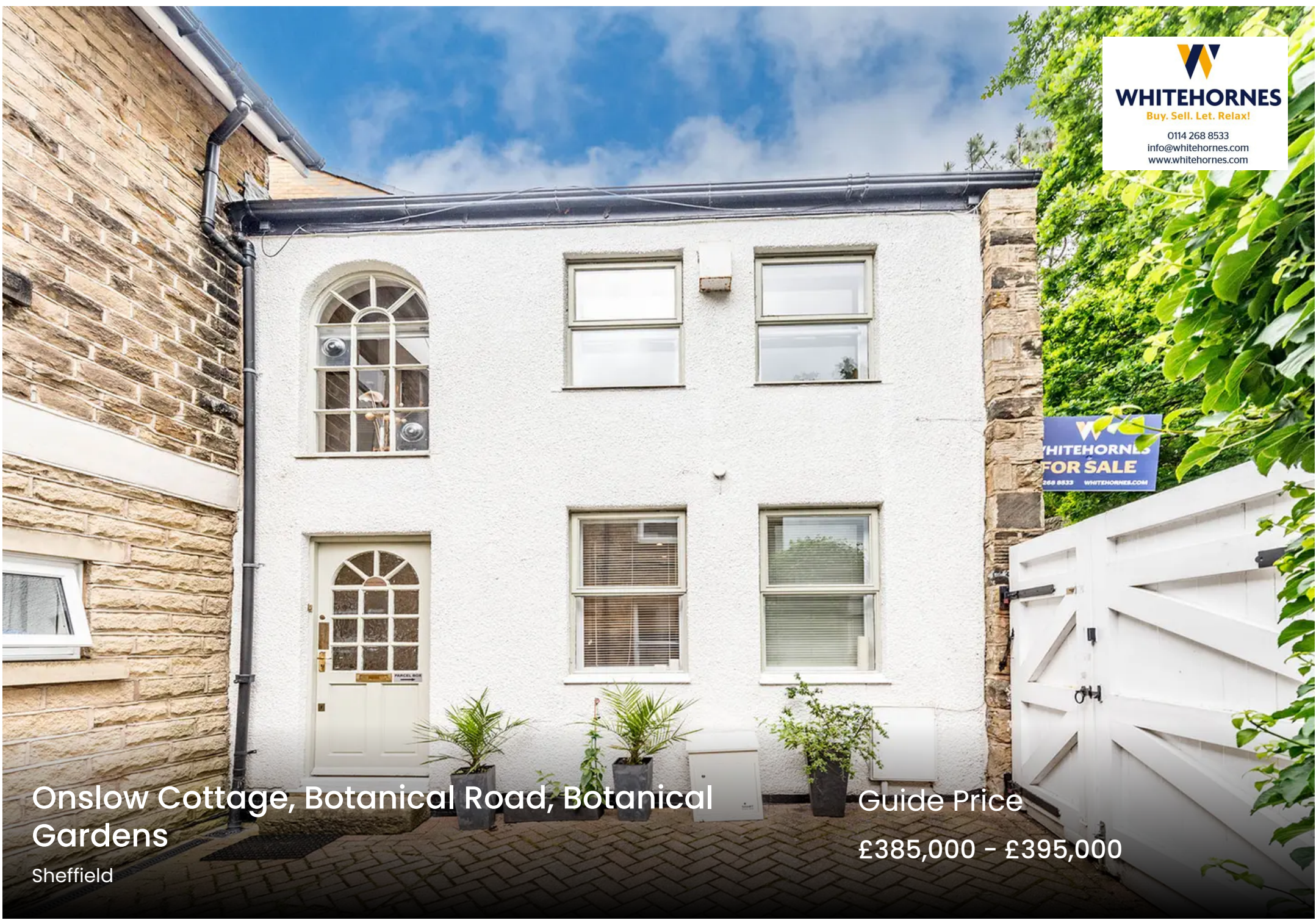
WHITEHORNS
Buy. Sell. Let. Relax!
0114 268 8533
info@whitehorns.com
www.whitehorns.com

WHITEHORNS
FOR SALE
268 8533 WHITEHORNS.COM

**Onslow Cottage, Botanical Road, Botanical
Gardens**

Sheffield

Guide Price
£385,000 - £395,000



Onslow Cottage, Botanical Road

Botanical Gardens, Sheffield

An absolutely stunning, immaculately presented and incredibly deceptive, two double bed roomed, mews coach house. Constructed from natural stone the property is filled with a rich history but has been effortlessly transformed by the current vendor to create this impressive and light contemporary vibe throughout. With accommodation carefully laid out over two floors that total an impressive 1,060 sq feet together with a private gated access, detached garage, terraced balcony accessed from the sitting room and full use of the wonderful communal gardens within Onslow house. Quietly tucked away towards the top of this no through road opposite the award winning Botanical Gardens the property offers a unique opportunity to purchase and is set in this tranquil setting away from the hustle and bustle. Located with a few short strides to the access of the Botanical Gardens and it's also worth noting that at the bottom of the road are both Ecclesall and Sharrow Vale shopping

Council Tax band: D

Tenure: Freehold

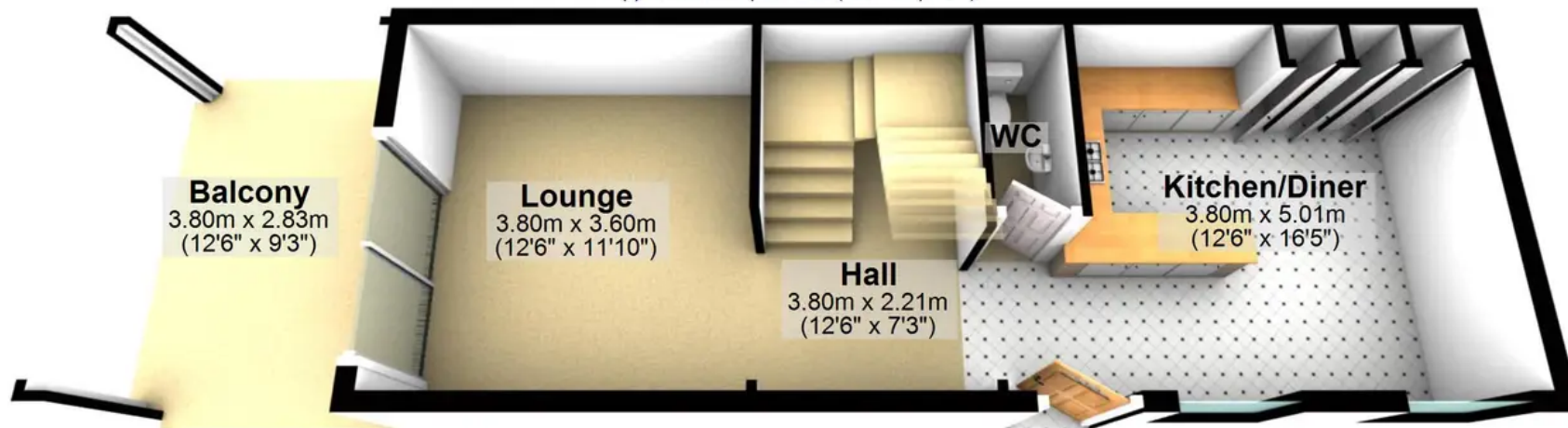
- STUNNING TWO DOUBLE BEDROOM MUSE COTTAGE
- FINISHED INTERNALLY TO AN EXCEPTIONALLY HIGH STANDARD THROUGHOUT BY THE CURRENT VENDOR
- INCREDIBLY RARE OPPORTUNITY TO MARKET WITH VIEWING ESSENTIAL
- PRIVATE REAR BALCONY TERRACE AND FULL USE OF COMMUNAL GROUNDS
- LOCATED TOWARDS THE TOP OF THIS QUIET NO THROUGH ROAD OPPOSITE THE BOTANICAL GARDENS





Ground Floor

Approx. 41.9 sq. metres (451.2 sq. feet)



Garage

Approx. 14.7 sq. metres (157.8 sq. feet)



First Floor

Approx. 41.9 sq. metres (451.2 sq. feet)



Total area: approx. 98.5 sq. metres (1060.2 sq. feet)

All measurements are approximate
Plan produced using PlanUp.