



WHITEHORSES

Buy. Sell. Let. Relax!

0114 268 8533
info@whitehorses.com
www.whitehorses.com

225 Westminster Avenue, Lodge Moor

Sheffield

Guide Price £165,000 - £175,000

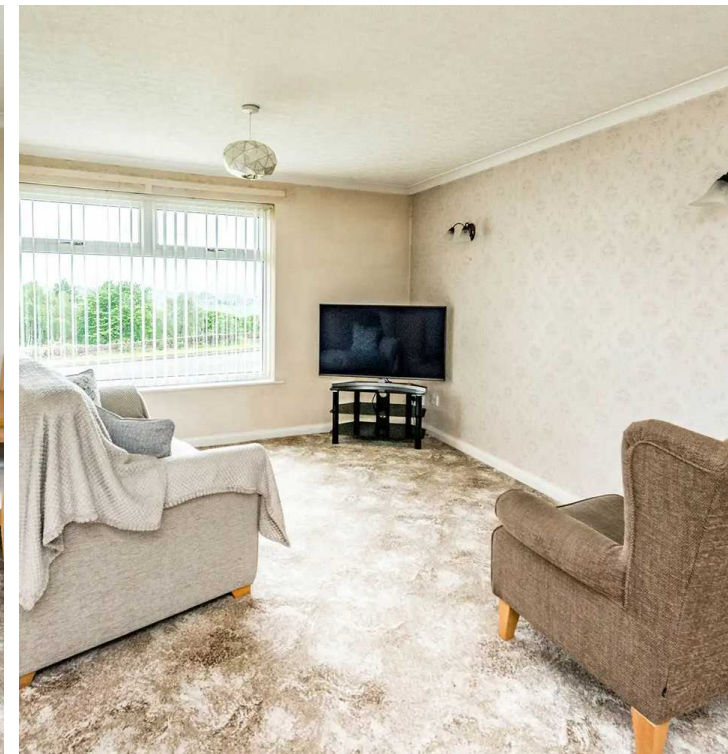
225 Westminster Avenue

Lodge Moor, Sheffield

An incredibly deceptive two double bedroomed, first floor apartment, with additional utility/office room. Forming part of this established residential development in the very heart of ultra popular Lodge Moor. Enjoying some truly impressive views over The Rivelin Valley that are best enjoyed from the sitting room. The apartment is on the very cusp of The Peak District but also offers up a wide variety of local amenities including principal hospitals and excellent public transport links. Being of particular interest to the professional couple, first time buyer, Investor or those looking to down size it's easy to say that viewing is essential to do full justice to the size on offer. With easy on road parking to the front the property, gas central heating and intercom entrance the accommodation in brief comprises, entrance hall with storage, open plan sitting/dining room, separate kitchen, two great sized double bedrooms, bathroom and occasional office room. VALUER Andy Robinson

Council Tax band: A Tenure: Leasehold

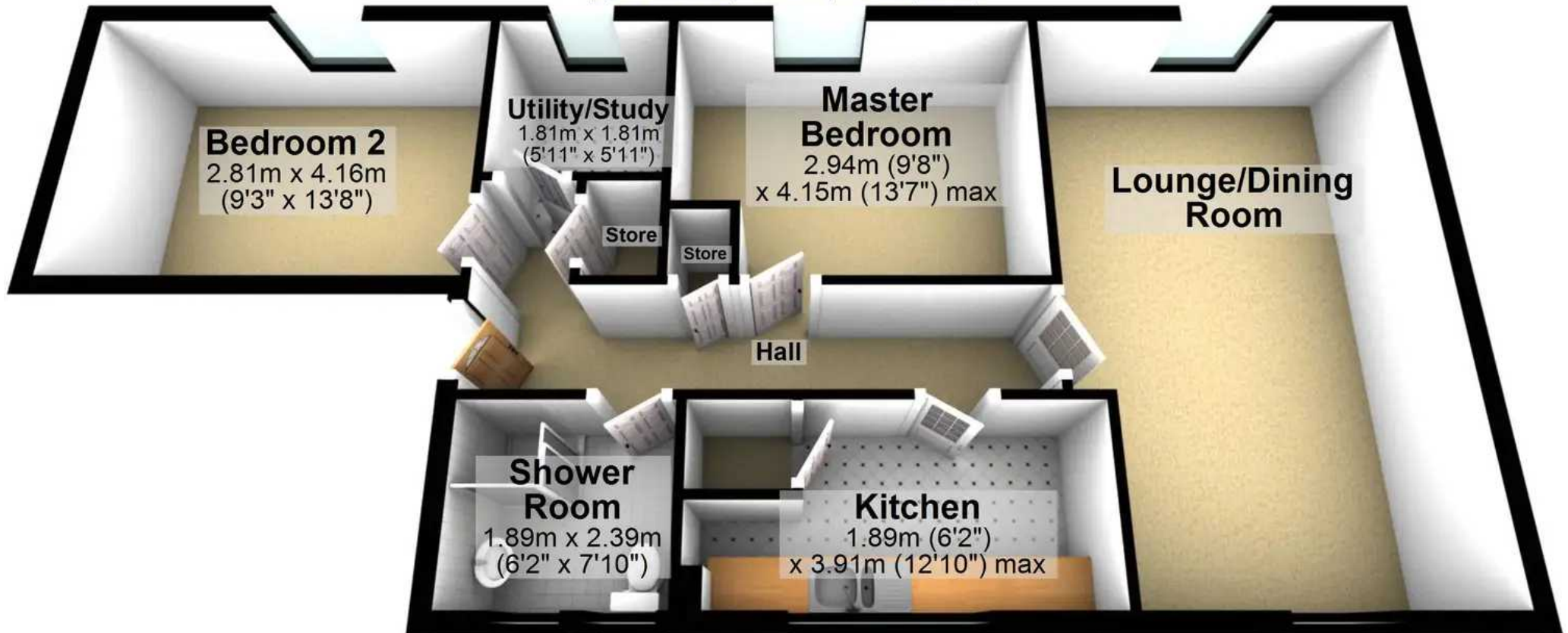
- FABULOUS TWO DOUBLE BEDROOM APARTMENT
- SENSATIONAL VIEWS OVER THE OPEN COUNTRYSIDE
- ADDITIONAL UTILITY/OFFICE FACILITY
- PERFECT FOR THE FIRST BUY DOWNSIZER OR INVESTMENT
- HEART OF ULTRA POPULAR LODGE MOOR ON THE SOUTH WEST OF THE CITY
- EASY ACCESS TO PRINCIPAL HOSPITALS PUBLIC TRANSPORT LINKS AND AMENITIES
- QUIET TUCKED AWAY ROAD
- SMARTLY PRESENTED AND INCREDIBLY SPACIOUS/LIGHT THROUGHOUT
- VIEWING ABSOLUTELY ESSENTIAL TO DO FULL JUSTICE
- LEASEHOLD PROPERTY AND COUNCIL TAX BAND B





Top Floor

Approx. 72.0 sq. metres (774.5 sq. feet)



Total area: approx. 72.0 sq. metres (774.5 sq. feet)

All measurements are approximate
Plan produced using PlanUp.