



WHITEHORNES

Buy. Sell. Let. Relax!

0114 268 8533
info@whitehorses.com
www.whitehorses.com

66 Louth Road, Greystones
Sheffield

Offers in Region of £360,000

66 Louth Road

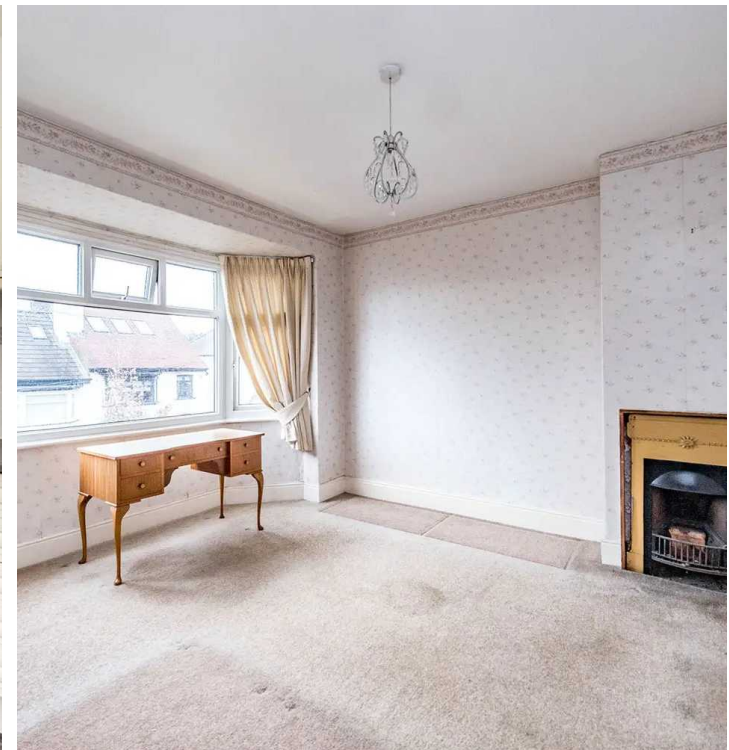
Greystones, Sheffield

Located in the very heart of ultra popular Greystones is this well presented and proportioned three bedroom, bay windowed, semi detached home. Standing in this elevated position ensuring privacy and some lovely views to the front, the property offers vast as yet untapped potential to further extend to the loft, rear and side (subject to planning) to create a forever home. Offering light and spacious accommodation currently on two floors it's easy to say that viewing is essential to see the full potential on offer. With pleasant rear garden and no chain involved number 66 is placed within easy reach of numerous local amenities of both Banner Cross, Sharrow Vale together with Endcliffe park being a short stroll.

Council Tax band: C

Tenure: Leasehold

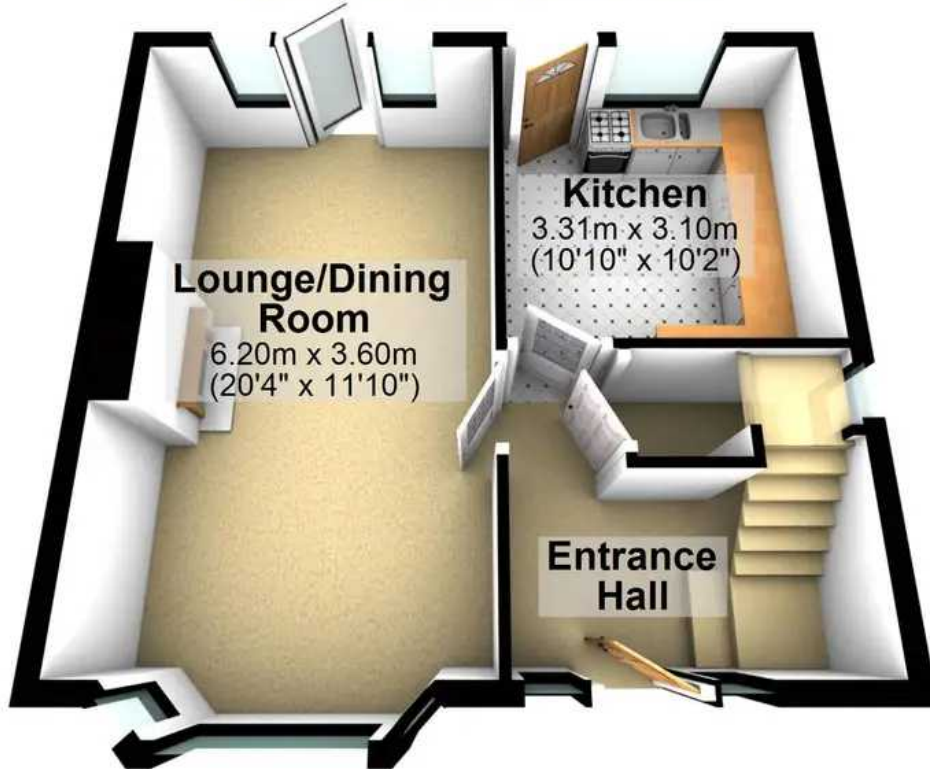
- THREE BEDROOMED SEMI DETACHED FAMILY HOME
- AVAILABLE WITH NO ONWARD CHAIN AND VACANT POSSESSION
- HUGE POTENTIAL TO EXTEND AND CONVERT THE LOFT SUBJECT TO PLANNING
- CLOSE TO NUMEROUS LOCAL AMENITIES WITHIN BANNER CROSS AND SHARROW VALE
- OFSTED RATED EXCELLENT SCHOOLING CATCHMENTS OF GREYSTONES JUNIORS AND HIGH STORRS SECONDARY
- PEAK DISTRICT IS ON THE DOORSTEP
- CLOSE TO PRINCIPAL HOSPITALS AND UNIVERSITIES





Ground Floor

Approx. 42.6 sq. metres (458.1 sq. feet)



First Floor

Approx. 42.5 sq. metres (458.0 sq. feet)



Total area: approx. 85.1 sq. metres (916.1 sq. feet)

All measurements are approximate
Plan produced using PlanUp.