



WHITEHORSES

Buy. Sell. Let. Relax!

0114 268 8533
info@whitehorses.com
www.whitehorses.com

194 Bannerdale Road, Carter Knowle

Sheffield

Guide Price £385,000 - £395,000

194 Bannerdale Road

Carter Knowle, Sheffield

An absolutely lovely four bedroomed, bay windowed, semi detached family home. Having been tastefully extended to the side to create a larger than average feel across the two floors and with further potential to extend in to the loft (subject to planning permission) if required to make a forever family home. Enjoying off road parking to the front and larger than expected rear garden that benefits from some fabulous views and backs on the allotments. This property is sure to be a hit with the growing family market and must be viewed to be fully appreciated. Located in the very heart of ultra popular Carter Knowle on the south west of the city on this well regarded residential road number 196 is within catchment for Ofsted rated excellent schools of Greystones juniors and both Mercia and High Storrs secondary.

Council Tax band: C

Tenure: Leasehold

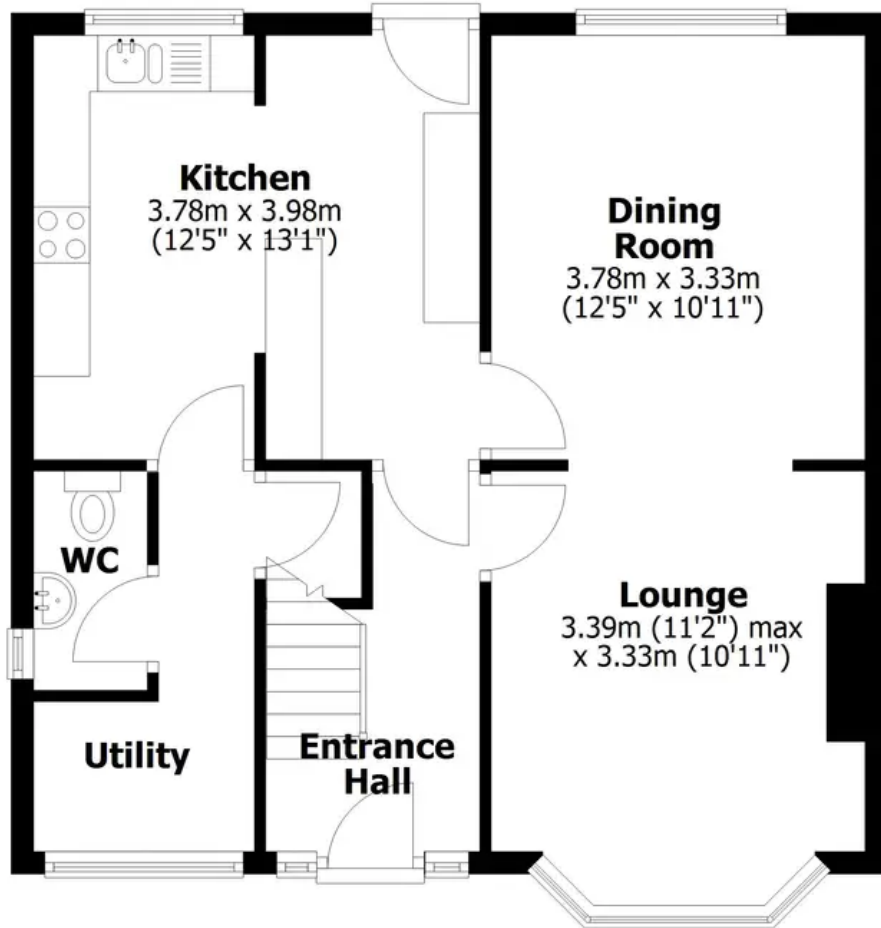
- FOUR BEDROOMED BAY WINDOWED SEMI DETACHED
- TASTEFULLY EXTENDED TO THE SIDE
- POTENTIAL IF REQUIRED TO CONVERT THE EXISTING LOFT (SUBJECT TO PLANNING)
- HEART OF ULTRA POPULAR CARTER KNOWLE
- OFSTED RATED EXCELLENT SCHOOLING CATCHMENTS OF GREYSTONES JUNIORS HIGH STORRS AND MERCIA SECONDARY
- PERFECT FOR THE GROWING FAMILY MARKET
- CLOSE TO NUMEROUS LOCAL AMENITIES AND THE PEAK DISTRICT
- CLOSE TO NUMEROUS LOCAL AMENITIES WITHIN BANNER CROSS SHOPPING PARADE
- FABULOUS REAR GARDEN ENJOYING VIEWS AND BACKING ON TO THE ALLOTMENTS





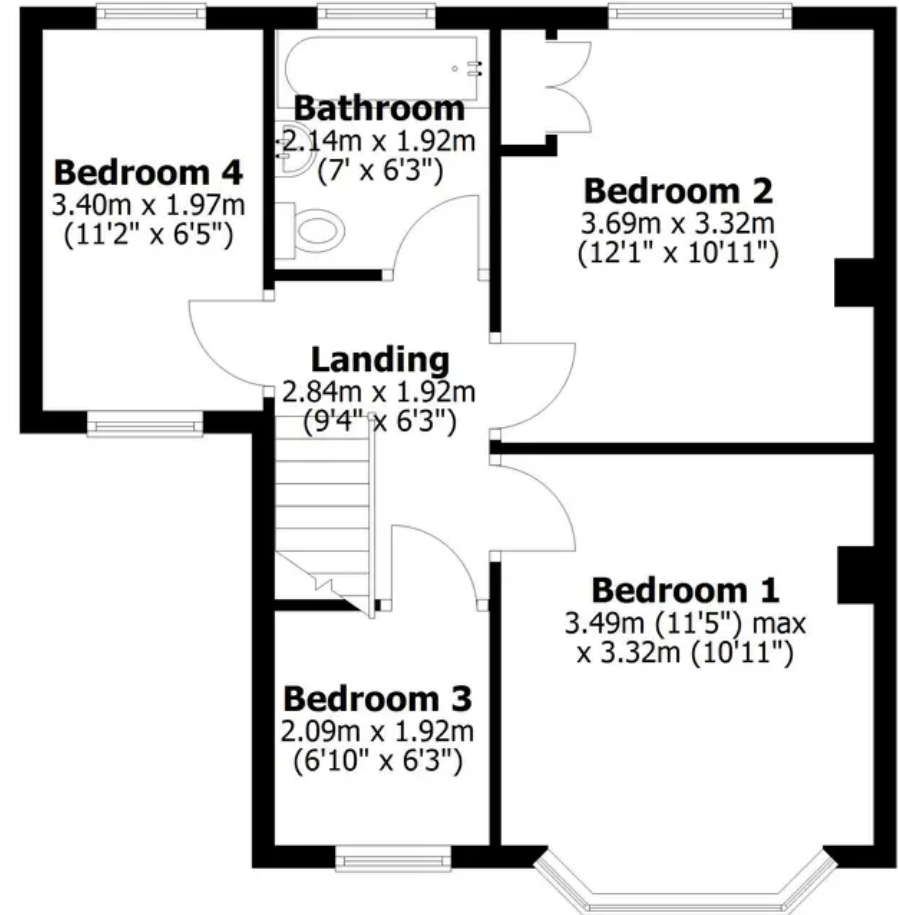
Ground Floor

Approx. 54.3 sq. metres (584.0 sq. feet)



First Floor

Approx. 46.2 sq. metres (497.6 sq. feet)



Total area: approx. 100.5 sq. metres (1081.6 sq. feet)

All measurements are approximate
Yorkshire EPC & Floor Plans Ltd
Plan produced using PlanUp.



WHITEHORNS

Buy. Sell. Let. Relax!

0114 268 8533
info@whitehorns.com
www.whitehorns.com