



**WHITEHORNS**  
Buy. Sell. Let. Relax!  
0114 268 8533  
info@whitehorns.com  
www.whitehorns.com



**43 Whirlow Court Road, Whirlow**  
Sheffield

Offers in Region of £485,000

# 43 Whirlow Court Road

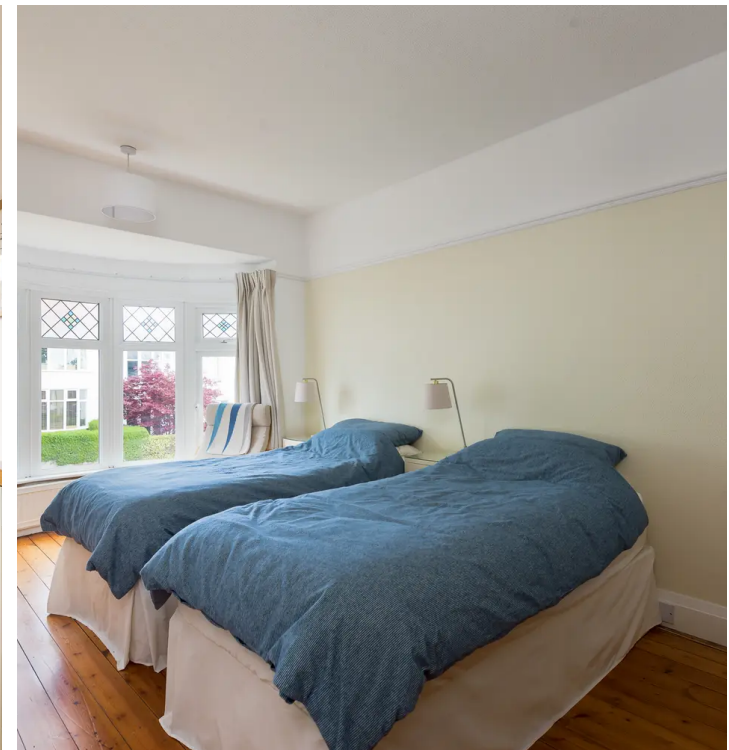
Whirlow, Sheffield

A beautifully appointed and very well proportioned four bedroomed, bay windowed semi detached family home. Retaining numerous stunning period features that are associated with a property from this era and effortlessly blending them with a contemporary modern twist that have been designed and installed by the current vendors with no expense spared. Enjoying a fabulous rear southerly facing garden, off road parking and garage together with some impressive views it's easy to say that this property will be exceptionally popular with the growing family market.

Council Tax band: D

Tenure: Leasehold

- SPACIOUS AND LIGHT ACCOMMODATION ON TWO FLOORS
- CLOSE TO THE PEAK DISTRICT
- IDEALLY SUITED TO THE GROWING FAMILY MARKET
- SILVERDALE SECONDARY SCHOOL CATCHMENTS
- OPPORTUNITY TO CONVERT THE LOFT AS NEIGHBOURING PROPERTIES HAVE DONE
- FOUR BEDROOMED PERIOD SEMI DETACHED FAMILY HOME
- ULTRA POPULAR SUBURB OF WHIRLOW
- ORIGINAL FEATURES MEET CONTEMPORARY FINISH PERFECTLY
- STUNNING VIEWS AND REAR FAMILY GARDEN WITH SOUTHERLY ASPECT
- OFF ROAD PARKING AND GARAGE LEASEHOLD PROPERTY AND COUNCIL TAX BAND C



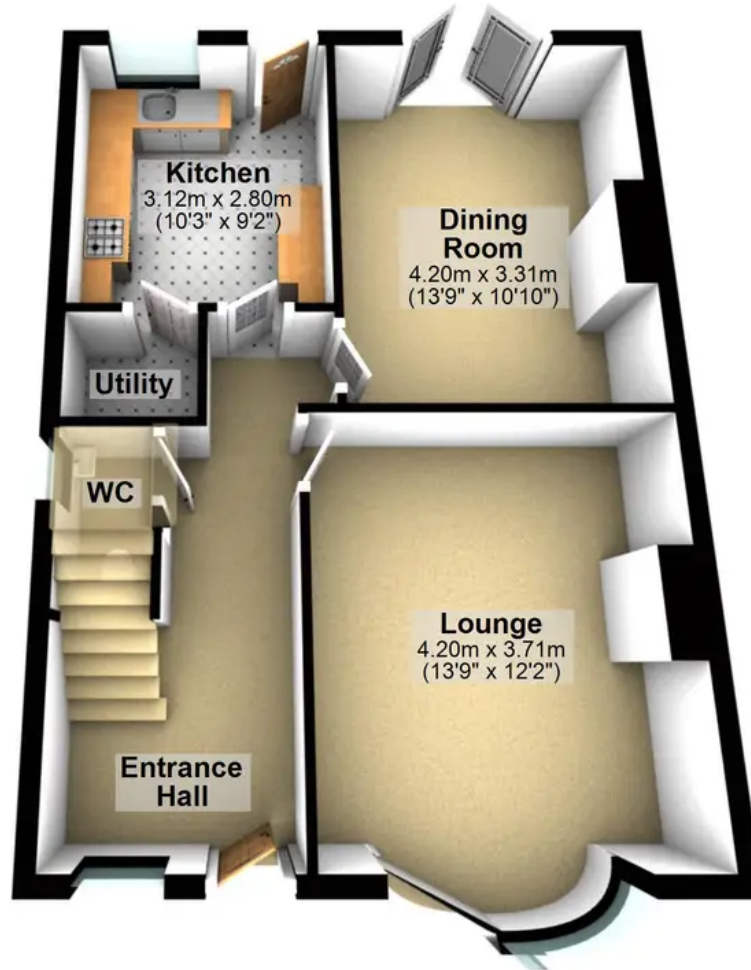


## Ground Floor

Approx. 67.9 sq. metres (730.4 sq. feet)



**Garage**  
4.92m x 3.01m  
(16'2" x 9'11")



**Kitchen**  
3.12m x 2.80m  
(10'3" x 9'2")

**Dining Room**  
4.20m x 3.31m  
(13'9" x 10'10")

**Utility**

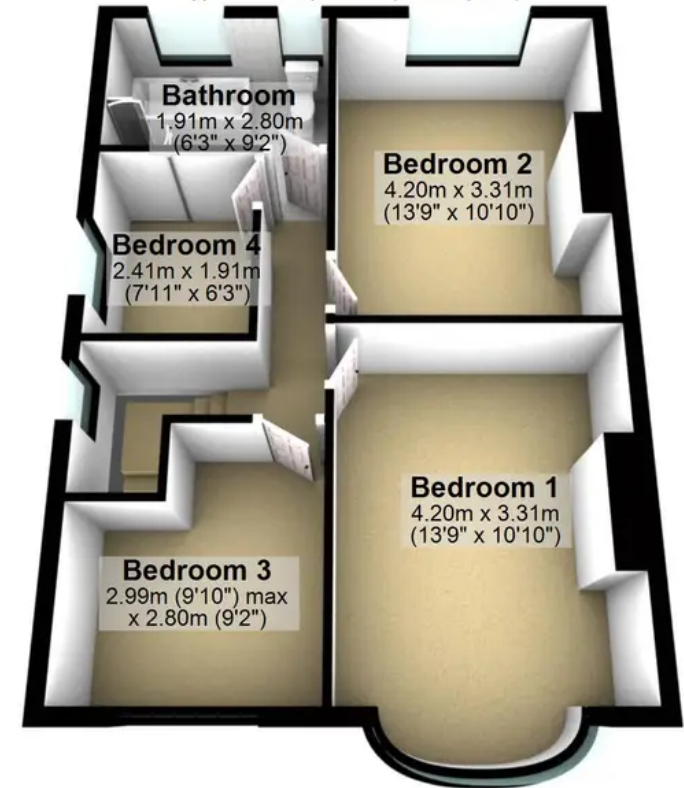
**WC**

**Lounge**  
4.20m x 3.71m  
(13'9" x 12'2")

**Entrance Hall**

## First Floor

Approx. 53.1 sq. metres (571.1 sq. feet)



**Bathroom**  
1.91m x 2.80m  
(6'3" x 9'2")

**Bedroom 2**  
4.20m x 3.31m  
(13'9" x 10'10")

**Bedroom 4**  
2.41m x 1.91m  
(7'11" x 6'3")

**Bedroom 1**  
4.20m x 3.31m  
(13'9" x 10'10")

**Bedroom 3**  
2.99m (9'10") max  
x 2.80m (9'2")

Total area: approx. 120.9 sq. metres (1301.5 sq. feet)

All measurements are approximate  
Plan produced using PlanUp.



**WHITEHORNS**

Buy. Sell. Let. Relax!

0114 268 8533  
info@whitehorns.com  
www.whitehorns.com