



**WHITEHORSES**

Buy. Sell. Let. Relax!

0114 268 8533  
info@whitehorses.com  
www.whitehorses.com



8 Peterdale Road, Brimington

Chesterfield

Offers in Region of £237,500

# 8 Peterdale Road

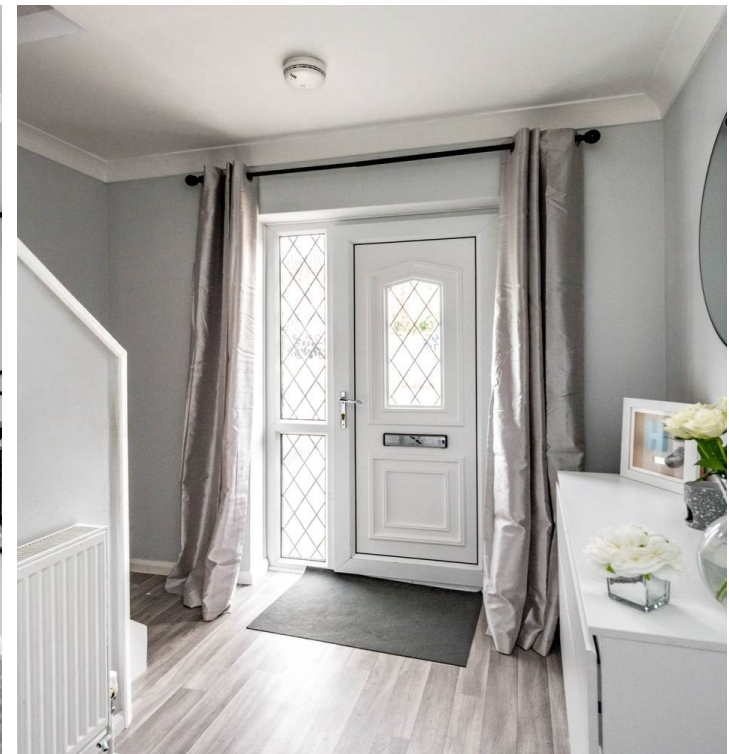
Brimington, Chesterfield

Nestled in the heart of the well sought-after S43 area, this stunning three-bedroom detached property spans an impressive 875 sq. ft., this home offers a beautiful oasis for a young family, first-time buyer, or professional couple seeking a comfortable and convenient living space. Number 8 briefly consists of an open, spacious living and diner room, well-appointed kitchen, light and bright conservatory, three well portioned bedrooms, and a family size bathroom.

Council Tax band: C

Tenure: Freehold

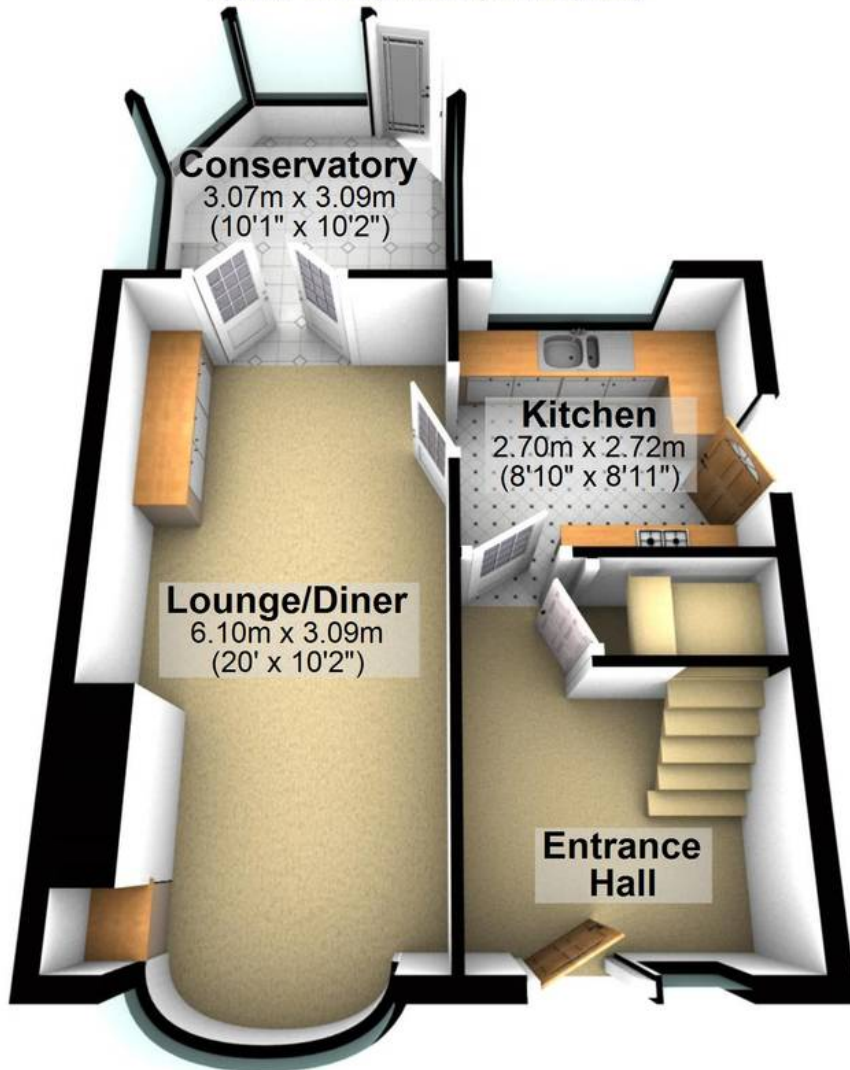
- STUNNING THREE BEDROOMED DETACHED PROPERTY TOTALLING 875 SQ FT
- HEART OF THE SOUGHT-AFTER S43 AREA
- BEAUTIFULLY DECORATED THROUGHOUT BY THE CURRENT VENDORS
- SPACIOUS AND LIGHT ACCOMMODATION OVER TWO FLOORS
- CLOSE TO NUMEROUS LOCAL AMENITIES AND SCHOOLS
- REAR CONSERVATORY AND LARGE ENCLOSED GARDEN
- PERFECT FOR THE YOUNG FAMILY, FIRST TIME BUYER OR PROFESSIONAL COUPLE
- FAMILY SIZED BATHROOM
- EASY ACCESS TO TRANSPORT LINKS AND THE M1
- FREEHOLD PROPERTY AND COUNCIL TAX BAND C





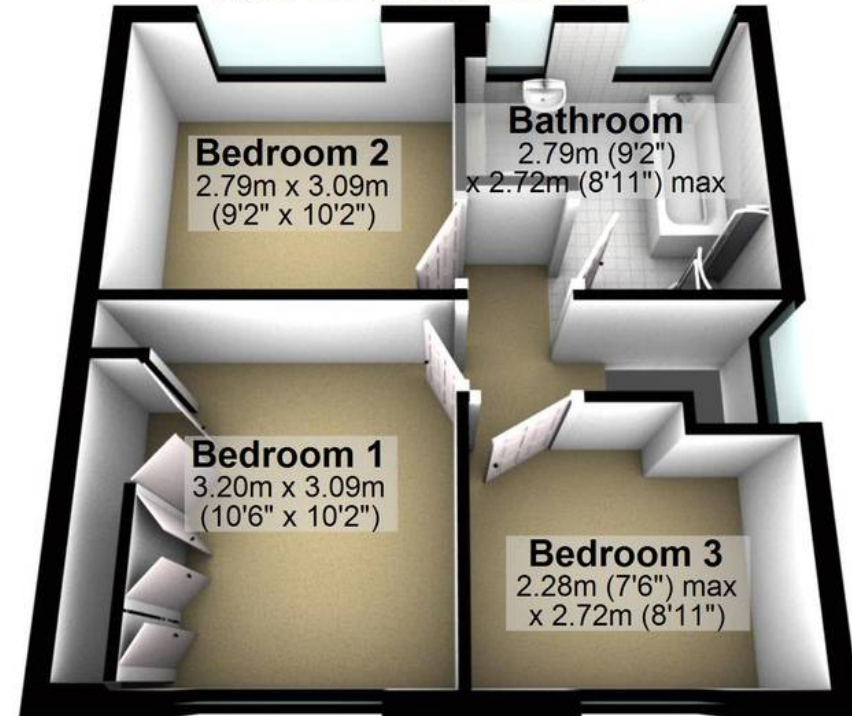
## Ground Floor

Approx. 45.3 sq. metres (487.2 sq. feet)



## First Floor

Approx. 36.0 sq. metres (387.9 sq. feet)



Total area: approx. 81.3 sq. metres (875.2 sq. feet)

All measurements are approximate  
Plan produced using PlanUp.