



WHITEHORNES

Buy. Sell. Let. Relax!

0114 268 8533
info@whitehornes.com
www.whitehornes.com



36 The Glen, Endcliffe, Sheffield

Guide Price £300,000

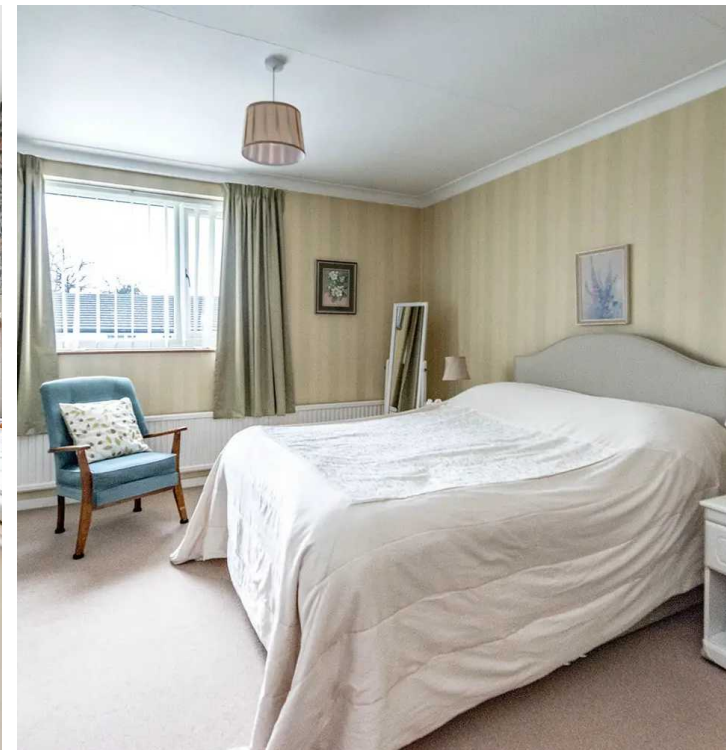
36 The Glen, Endcliffe

An absolutely fabulous two double bedroomed, second floor apartment. Forming part of this highly sought after residential development in the very heart of ultra popular Endcliffe. The property enjoys a super light and spacious feel throughout and offers one of the larger styles. Enjoying a private balcony with views over the communal gardens, private garage and ample visitors parking bays. Offered to the open market with the benefit of no upward chain and vacant possession this apartment will be popular with the professional couple and those looking to downsize in equal measures.

Council Tax band: C

Tenure: Leasehold

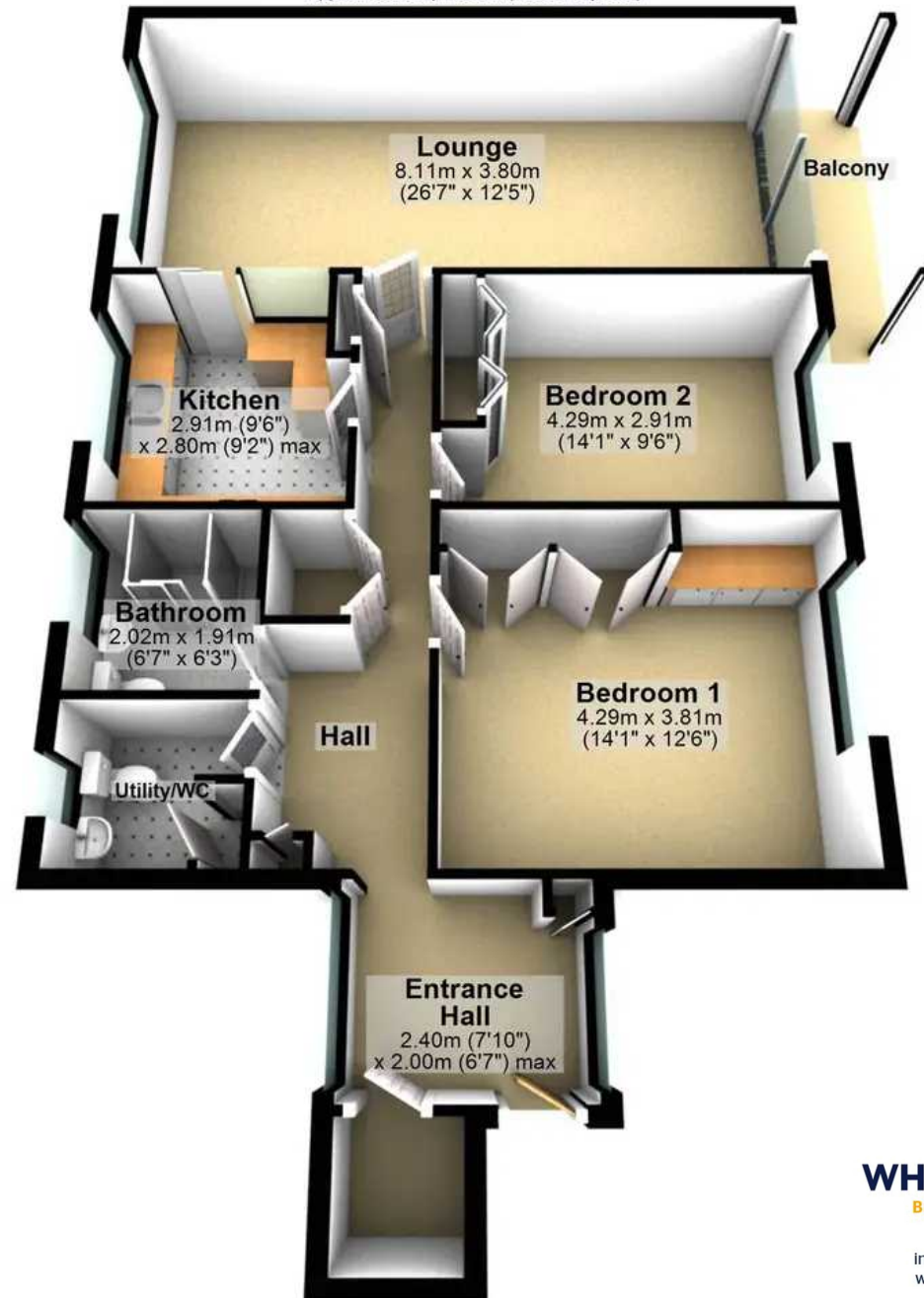
- FABULOUS TWO DOUBLE BEDROOMED APARTMENT
- OFFERING ONE OF THE LARGEST STYLES OF PROPERTY IN THIS STUNNING DEVELOPMENT
- SUPERB PRIVATE SETTING WITH BEAUTIFUL VIEWS
- PERFECT FOR THOSE LOOKING TO DOWNSIZE OR THE PROFESSIONAL COUPLE
- INCREDIBLY LGHT AND SPACIOUS THROUGHOUT WITH VIEWING ESSENTIAL
- CLOSE TO NUMEROUS LOCAL AMENITIES AND GREAT PUBLIC TRANSPORT LINKS
- LEASEHOLD PROPERTY AND COUNCIL TAX BAND C
- PRIVATE BALCONY AND LOCK UP SINGLE GARAGE
- AVAILABLE WITH NO ONWARD CHAIN AND VACANT POSSESSION
- HEART OF ULTRA POPULAR ENDCLIFFE ON THE SOUTH WEST OF THE CITY





Top Floor

Approx. 93.5 sq. metres (1006.4 sq. feet)



Garage

Approx. 13.9 sq. metres (150.0 sq. feet)



Total area: approx. 107.4 sq. metres (1156.4 sq. feet)

All measurements are approximate
Plan produced using PlanUp.


WHITEHORNES

Buy. Sell. Let. Relax!

0114 268 8533
info@whitehornes.com
www.whitehornes.com