



WHITEHORSES
Buy. Sell. Let. Relax!
0114 268 8533
info@whitehorses.com
www.whitehorses.com



3 Sandringham Place, Lodge Moor, Sheffield

Guide Price £1,500,000 – £1,600,000

3 Sandringham Place, Lodge Moor

A once in a lifetime opportunity has arisen to purchase this absolutely stunning, immaculately presented and very deceptive six bedroomed, five bathroomed, stone built family residence. Offered to the open market for the first time since being constructed, the current vendors have expertly designed and extended the original footprint throughout the years to create this fabulous finished forever family home. Positioned in our opinion within the best plot on this exclusive development that ensures a huge degree of privacy together with some far reaching views over The Peak District that can be best enjoyed from the roof terrace accessed from the master suite.

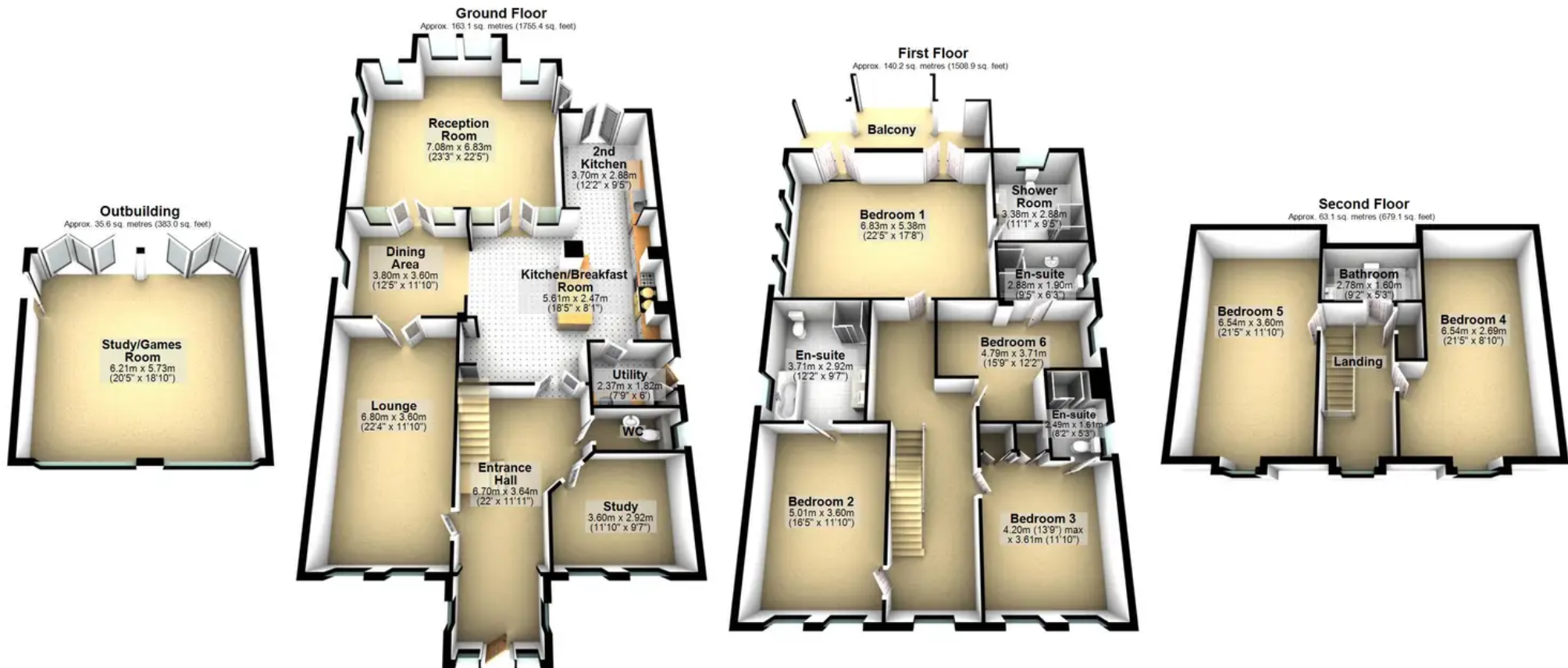
Council Tax band: G

Tenure: Freehold

- STUNNING SIX BEDROOMED STONE BUILT DETACHED FAMILY RESIDENCE
- ONCE IN A LIFETIME OPPORTUNITY TO PURCHASE
- IN OUR OPIONION THE BEST PLOT ON THIS EXCLUSIVE DEVELOPMENT
- TASTEFULLY EXTENDED TO CREATE THIS FABULOUS FEELING OF SPACE AND LIGHT
- FAR REACHING VIEWS OVER THE PEAK DISTRICT
- EXCLUSIVE RESIDENTIAL DEVELOPMENT IN THE HEART OF LODE MOOR
- THREE FLOORS OF ACCOMMODATION TOTALLING AN IMPRESSIVE 4,326 SQ FEET
- OFSTED RATED EXCELLENT SCHOOL CATCHMENTS AND CLOSE TO PRIVATE SCHOOLS ALSO
- PERFECT FOR THE GROWING FAMILY MARKET LOOKING FOR A FOREVER HOME
- FREEHOLD PROPERTY AND COUNCIL TAX BAND G







Total area: approx. 401.9 sq. metres (4326.3 sq. feet)

All measurements are approximate
Plan produced using PlanUp.