



WHITEHORSES

Buy. Sell. Let. Relax!

0114 268 8533
info@whitehorses.com
www.whitehorses.com

382 Ecclesall Road South, Sheffield

Sheffield

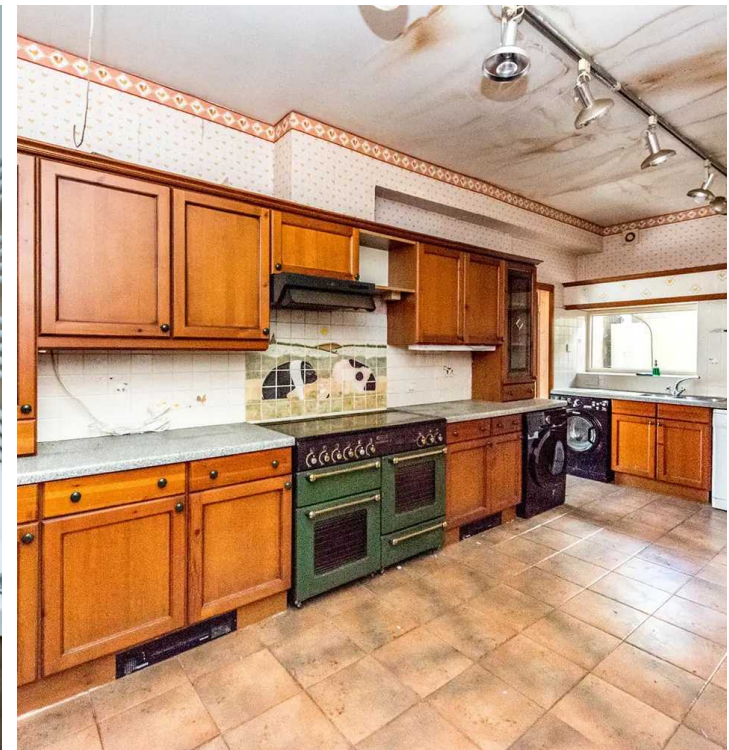
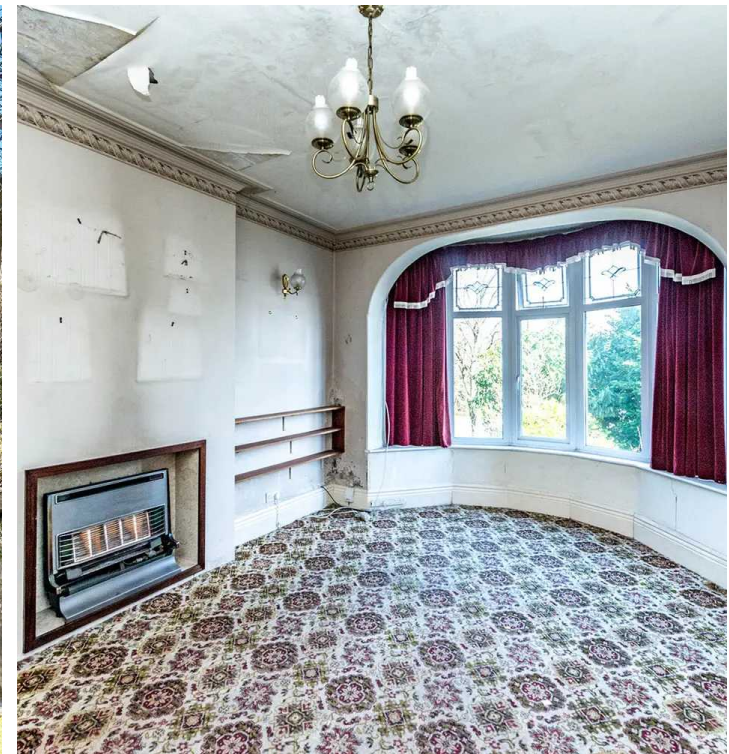
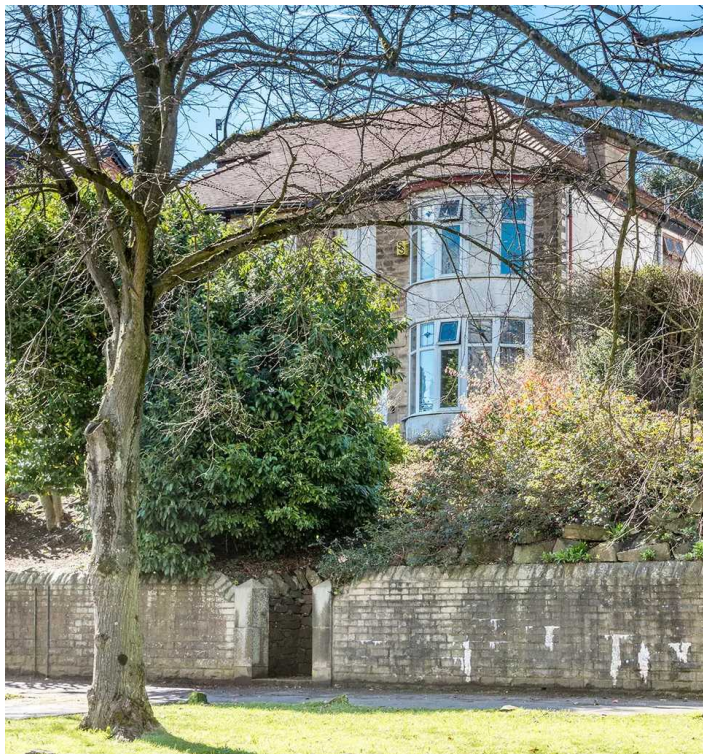
Guide Price **£325,000-£350,000**

382 Ecclesall Road South

Sheffield, Sheffield

GUIDE PRICE £325,000-£350,000 Standing in this elevated position and set back from the road that ensures privacy along with some commanding views is...

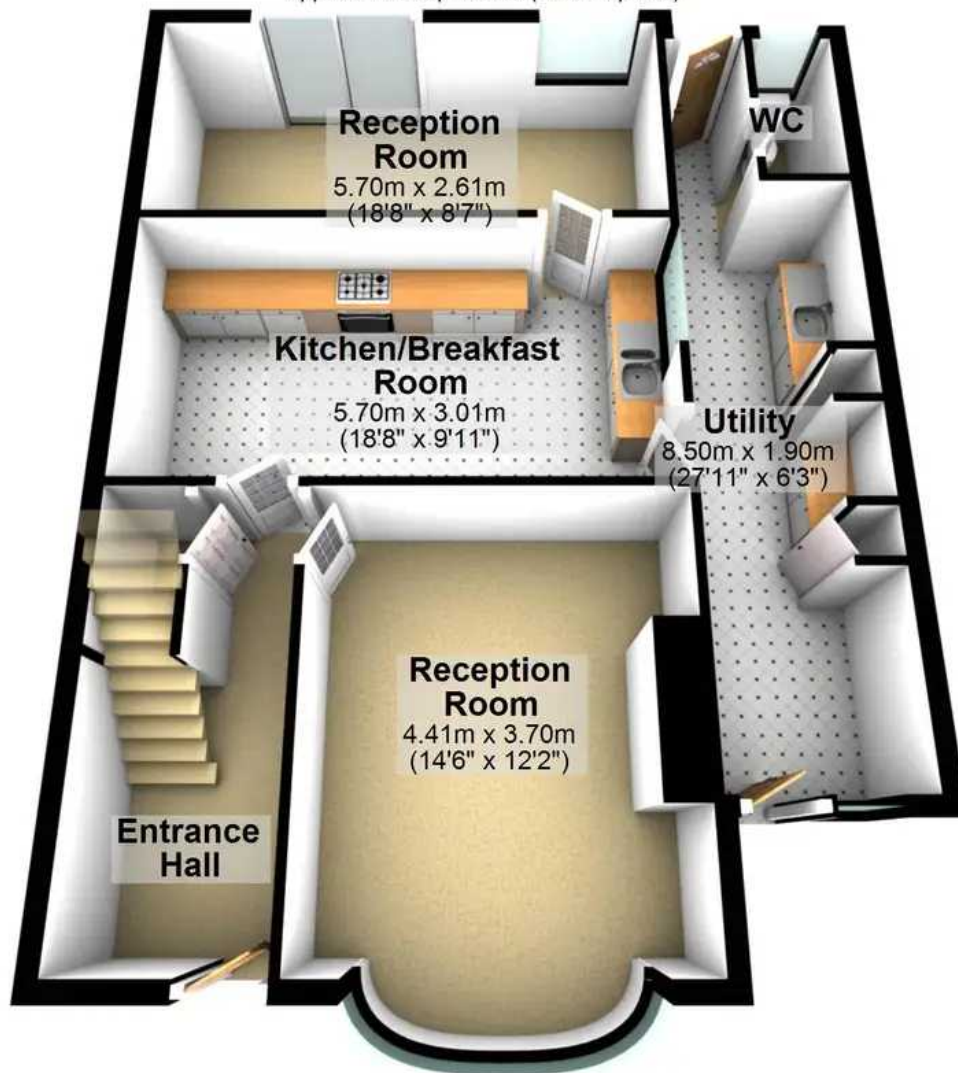
- LEASEHOLD WITH 701 YEARS LEFT COUNCIL TAX BAND D
- PEAK DISTRICT ON THE DOOR STEP
- INCREDIBLY SPACIOUS ACCOMMODATION ON TWO FLOORS WITH POTENTIAL TO CONVERT THE LOFT
- FOUR BEDROOMED STONE FRONTED SEMI DETACHED
- ECCLESALL WOODS A SHORT STROLL
- OFSTED RATED EXCELLENT SCHOOLING CATCHMENTS INCLUDING SILVERDALE SECONDARY
- HEART OF ULTRA POPULAR PARK HEAD
- HUGE POTENTIAL TO CREATE A FOREVER HOME
- ELEVATED POSITION ENSURING PRIVACY AND FINE VIEWS
- PERFECT FOR THE FAMILY LOOKING TO PUT THERE OWN STAMP ON A PROPERTY





Ground Floor

Approx. 75.8 sq. metres (815.4 sq. feet)



First Floor

Approx. 60.9 sq. metres (655.8 sq. feet)



Total area: approx. 136.7 sq. metres (1471.2 sq. feet)

All measurements are approximate
Plan produced using PlanUp.