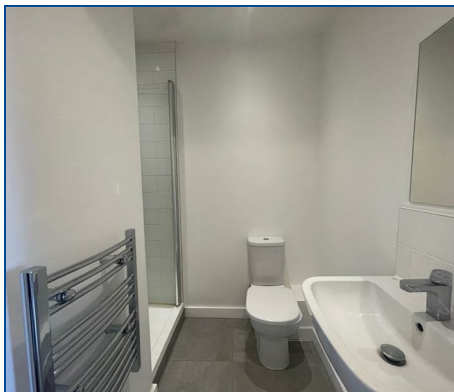


Peterborough  
Telephone: 01733 560 650  
Email: Lettings@RegalPark.co.uk  
**RegalPark.co.uk**

7 Office Village, Cygnet Park, Peterborough, PE7 8GX

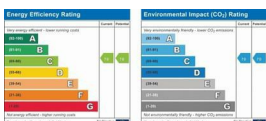


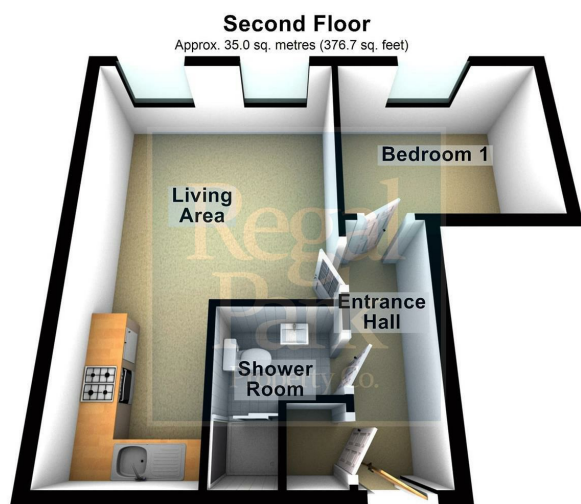
## Wentworth Street, City Centre, Peterborough, PE1 1DS £800 Per month

**\*CITY CENTRE\* \*WALKING DISTANCE TO TRAIN STATION\* \*SECOND FLOOR\***  
Regal Park are pleased to offer this 1 Bedroom Second Floor Flat in the popular location of Cathedral View, City Centre. The property is situated in the city centre and is walking distance to the Train Station and many other local amenities and shops. The Flat comprises of: Entrance Hall, Living Area with Kitchen and integrated fridge, Bedroom and Shower Room.  
There is a lift within the block.  
Viewings Highly Recommended.

**\*Please note there is no parking with this Flat\***

EPC Rating: C  
Council Tax Band: A





Total area: approx. 35.0 sq. metres (376.7 sq. feet)

### Entrance Hall

Wall mounted electric heater, laminate flooring, intercom entry phone, smoke detector, storage cupboard with hot water cylinder and plumbing for washing machine, door to:

### Living Area

19'11" x 12'0" max (6.07m x 3.66m max)

The lounge area has two uPVC double glazed windows, wall mounted electric heater, laminate flooring, telephone point, TV point, smoke detector, open plan to Kitchen area, fitted with a matching range of base and eye level units with worktop space over, stainless steel sink unit with mixer tap, integrated fridge with small freezer compartment, fitted electric fan assisted oven with built-in four ring ceramic hob with extractor hood over.

### Bedroom 1

8'6" x 10'2" (2.60m x 3.10m)

UPVC double glazed window, wall mounted electric heater, laminate flooring, TV point.

### Shower Room

Fitted with a three piece suite comprising of a recessed tiled shower cubicle with fitted shower over, pedestal wash hand basin, low-level WC, shaver point, heated towel rail.