



## Hale Grove Gardens

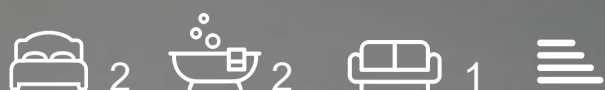
**£2,250 Per Month**

Cosway Estates are pleased to offer for rent this stunning two bedroom garden flat, in house conversion, finished to an exceptional standard throughout, situated in quiet cul-de-sac, moments from Mill Hill Broadway. This beautifully designed home features a luxurious open-plan kitchen and living area with sleek granite worktops and elegant bi-fold doors opening onto a private rear garden; two bedrooms (en-suite shower room to master bedroom) and 2nd bathroom. This property comes with off-street parking. Ideally located close to the shops, restaurants, coffee shops on Mill Hill Broadway and to Mill Hill Thameslink train station. AVAILABLE MID-MAY 2025. Viewings highly advised.

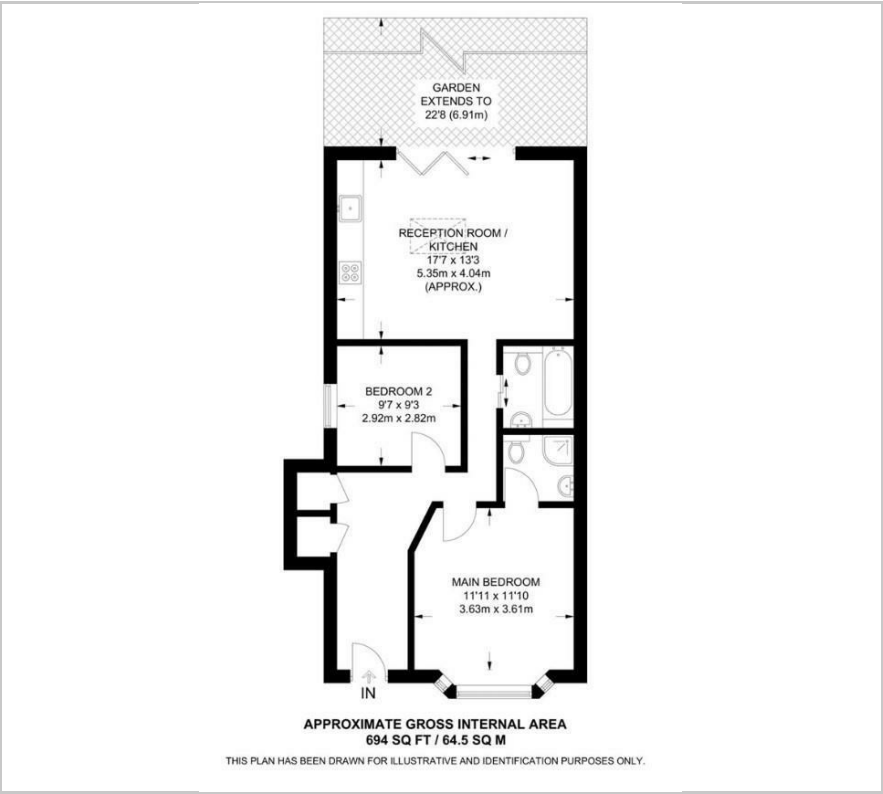
### Viewing

Please contact our Mill Hill Office on 02089590011 if you wish to arrange a viewing appointment for this property or require further information.

- 2 DOUBLE BEDROOMS
- 2 BATHROOMS
- GARDEN FLAT
- SHARE OF FREEHOLD
- NO GROUND RENT OR SERVICE CHARGE
- GROUND FLOOR
- CHAIN FREE



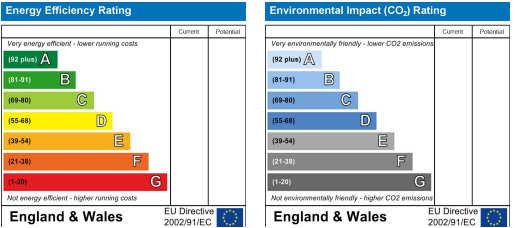
Floor Plan



Area Map



Energy Efficiency Graph



These particulars, whilst believed to be accurate are set out as a general outline only for guidance and do not constitute any part of an offer or contract. Intending purchasers should not rely on them as statements of representation of fact, but must satisfy themselves by inspection or otherwise as to their accuracy. No person in this firms employment has the authority to make or give any representation or warranty in respect of the property.