



Lacey Drive

£3,250 Per Month

Cosway Estates are pleased to offer for rent this lovely large modern four bedroom townhouse, located in the highly desirable Edgware Green Development within easy reach of Edgware Town Centre, which includes restaurants; coffee shops and the Broadwalk Shopping Centre.

The property is arranged over three floors and to the ground floor includes a study; fully fitted modern kitchen/dining room with direct access onto a rear garden; WC and utility room. On the first floor the property offers a large and bright reception room that runs across the back of the property; a double bedroom and a family bathroom. On the second floor there is a spacious master bedroom with en-suite shower room and two further bedrooms.

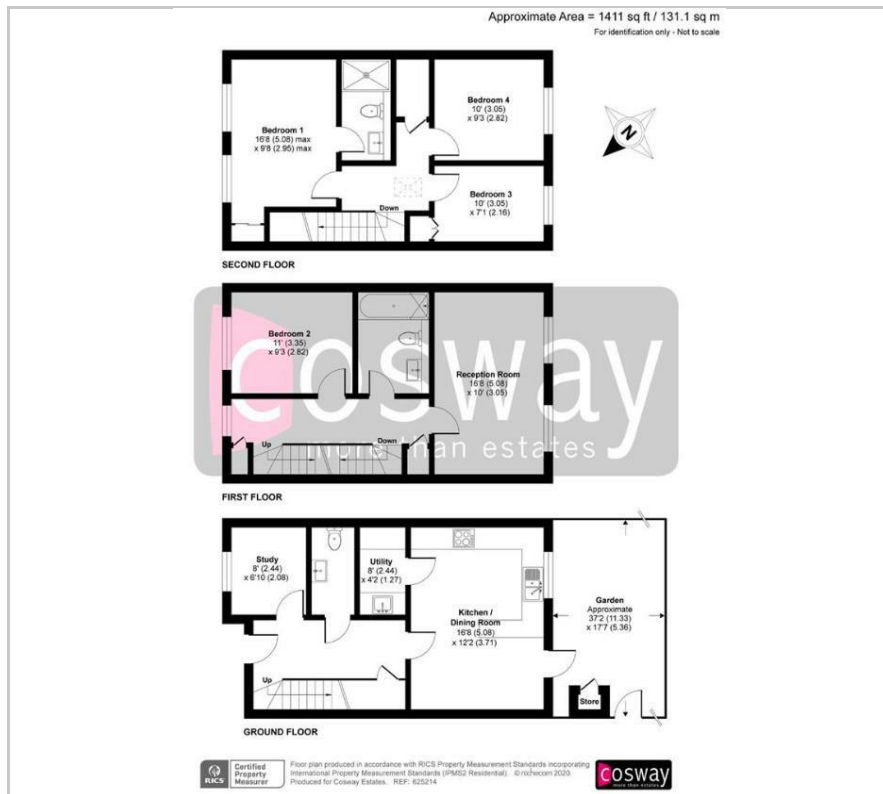
Further benefits include excellent storage throughout and also a designated parking space at the front of the house. Close to Stanmore tube station (Jubilee Line). AVAILABLE NOW. Viewings highly advised.

Viewing

Please contact our Mill Hill Office on 02089590011 if you wish to arrange a viewing appointment for this property or require further information.



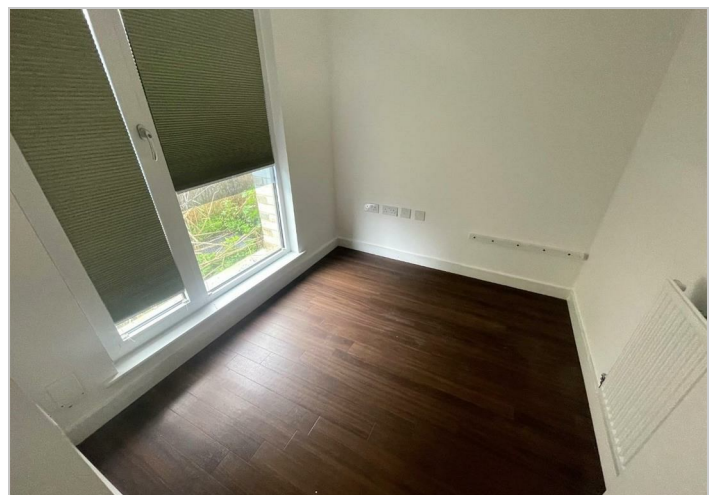
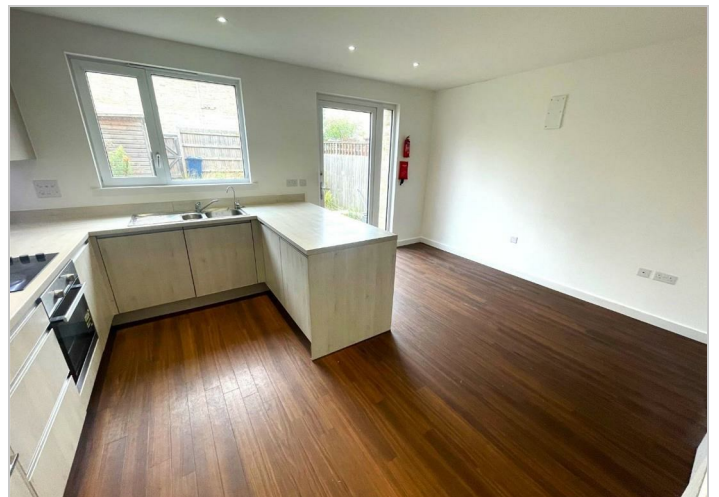
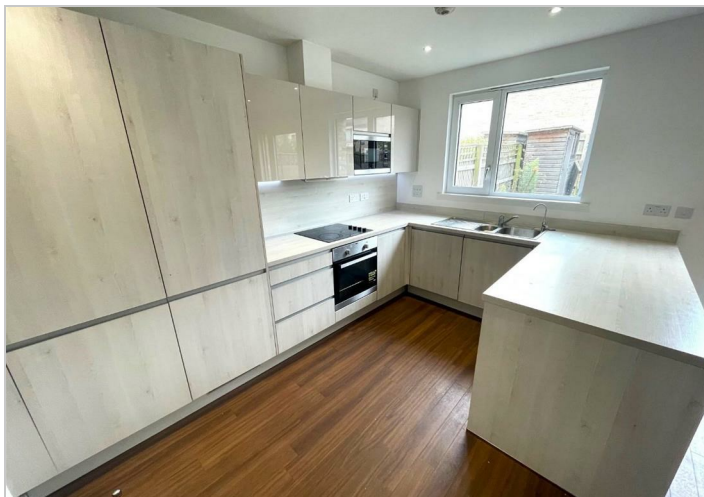
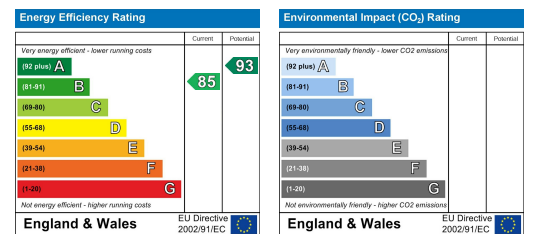
Floor Plan



Area Map



Energy Efficiency Graph



These particulars, whilst believed to be accurate are set out as a general outline only for guidance and do not constitute any part of an offer or contract. Intending purchasers should not rely on them as statements of representation of fact, but must satisfy themselves by inspection or otherwise as to their accuracy. No person in this firm's employment has the authority to make or give any representation or warranty in respect of the property.