



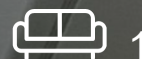
Watford Way

£1,500 Per Month

Cosway Estates are pleased to offer for rent this two double bedroom 1st floor purpose built maisonette. This property comprises of spacious reception room; separate fitted kitchen; two good size double bedrooms and shower room. Convenient location close to Mill Hill Broadway. Good access to public transport links and to the M1 Motorway. AVAILABLE AUGUST 2024.

Viewing

Please contact our Mill Hill Office on 02089590011 if you wish to arrange a viewing appointment for this property or require further information.



Floor Plan

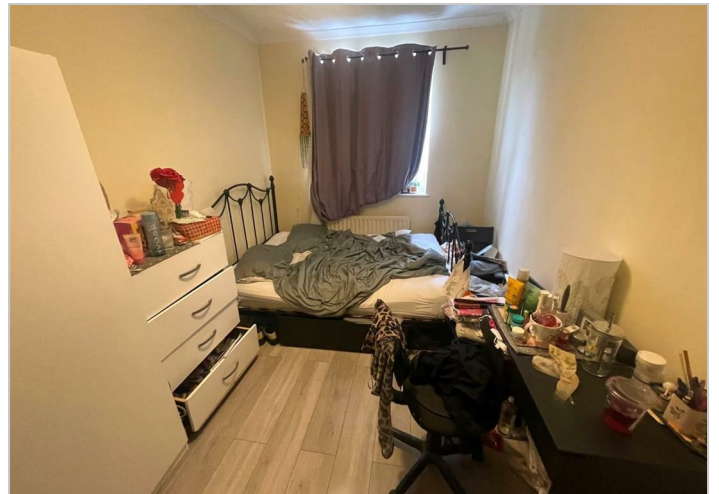
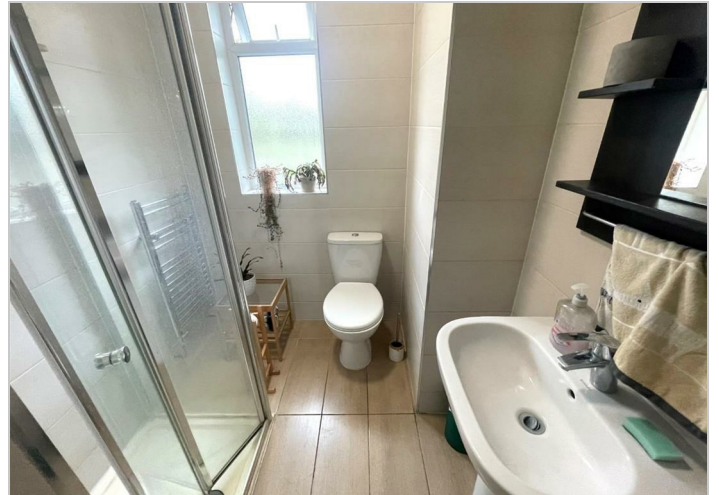


Area Map



Energy Efficiency Graph

Energy Efficiency Rating		Environmental Impact (CO ₂) Rating	
	Current	Potential	
Very energy efficient - lower running costs			Very environmentally friendly - lower CO ₂ emissions
(92 plus) A			(92 plus) A
(81-91) B			(81-91) B
(69-80) C			(69-80) C
(55-68) D			(55-68) D
(39-54) E			(39-54) E
(21-38) F			(21-38) F
(1-20) G			(1-20) G
Not energy efficient - higher running costs			Not environmentally friendly - higher CO ₂ emissions
England & Wales		EU Directive 2002/91/EC	England & Wales
			EU Directive 2002/91/EC



These particulars, whilst believed to be accurate are set out as a general outline only for guidance and do not constitute any part of an offer or contract. Intending purchasers should not rely on them as statements of representation of fact, but must satisfy themselves by inspection or otherwise as to their accuracy. No person in this firm's employment has the authority to make or give any representation or warranty in respect of the property.