



## Bloomsbury Close

**£1,900 Per Month**

Cosway Estates are pleased to offer for rent this well presented spacious two bedroom/two bathroom first floor flat located in a sought after modern development, close to Mill Hill Broadway. Comes part-furnished. This property comprises of an open-plan modern fitted kitchen with spacious reception room; master double bedroom with ensuite shower room; second bedroom; family bathroom and allocated parking space. Located in close proximity to the shops; restaurants; coffee shops and train station of Mill Hill Broadway. AVAILABLE LAST WEEK OF JULY 2024. VIEWINGS HIGHLY ADVISED.

### Viewing

Please contact our Mill Hill Office on 02089590011 if you wish to arrange a viewing appointment for this property or require further information.



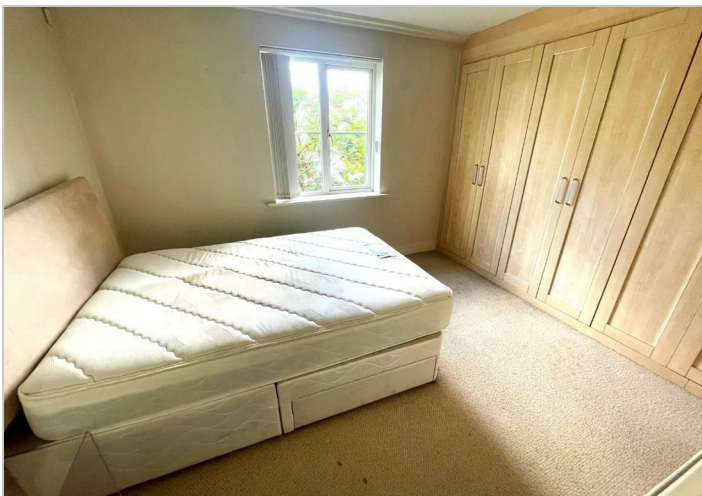
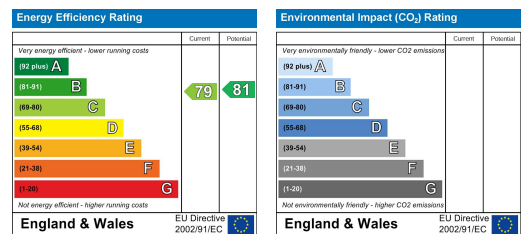
## Floor Plan



## Area Map



## Energy Efficiency Graph



These particulars, whilst believed to be accurate are set out as a general outline only for guidance and do not constitute any part of an offer or contract. Intending purchasers should not rely on them as statements of representation of fact, but must satisfy themselves by inspection or otherwise as to their accuracy. No person in this firm's employment has the authority to make or give any representation or warranty in respect of the property.